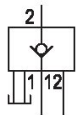


## AVENTICS Series NR02 Non-return valves

AVENTICS Series NR02, thanks to an array of connection options, the NR non-return valves can be screwed in separately and are also suitable for direct installation in piping. NR02 non-return valves are pneumatically pilot operated.



## Technical data

Industry	Industrial
Type	Poppet valve
Mounting	thread-in
Compressed air connection 1	G 1/8
Compressed air connection type 1	Internal thread
Compressed air connection 2	G 1/8
Compressed air connection type 2	External thread
Compressed air connection 12	M5
Nominal flow Qn 1 to 2	170 l/min
Min. working pressure	2 bar
Max. working pressure	10 bar
Min. ambient temperature	-5 °C
Max. ambient temperature	70 °C
Min. medium temperature	-5 °C
Max. medium temperature	70 °C
Medium	Compressed air
Weight	0.04 kg

# Pilot-operated non-return valve, Series NR02

0821003045

Series  
NR02

2024-01-24

## Material

Housing material

Brass

Surface housing

nickel-plated

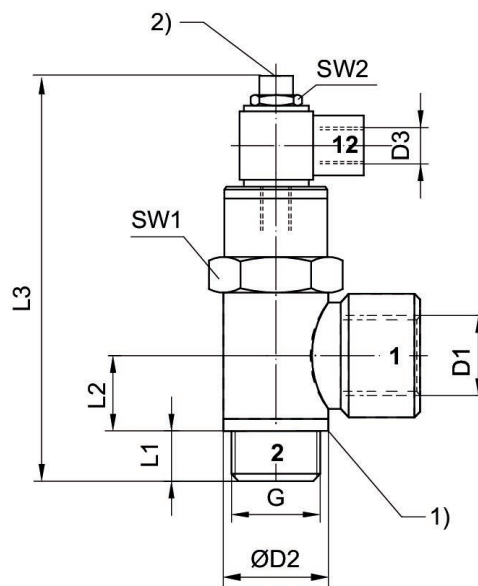
Seal material

Acrylonitrile butadiene rubber

Part No.

0821003045

## Dimensions



1) Seal, captive

2) Manual exhaust

	G	D1	D2	D3	L1	L2	L3	SW1	SW2
0821003045	G 1/8	G 1/8	14	M5	6	9.5	62	13	8
0821003046	G 1/8	G 1/4	18	M5	8.2	10.3	67	17	8