

Foot mounting MS1, Series CM1

3662205000

Foot
mountings

2023-11-01

AVENTICS Foot mountings



Technical data

Industry

Industrial

Version

to mount on cylinder PRA, TRB, CCI, KPZ, 167,
CVI, ITS

For series

167

Piston diameter

50 mm

Material

Housing material

Steel, chrome-plated

Surface housing

galvanized

Screws material

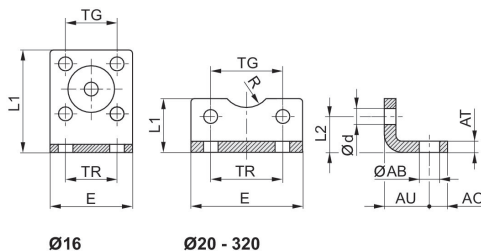
Steel, chrome-plated

Surface screws

galvanized

Part No.

3662205000



Foot mounting MS1, Series CM1

3662205000

Foot
mountings

2023-11-01

Piston Ø	Part No.	ØAB	AO	AT	AU ±0,2	Ød	E	L1	L2
16	1821332053	5.5	5	3	13	4.5	29	35.5	13
20	1827002284	6.6	6	4	16	5.4	36	22	16
25	1827002285	6.6	6	4	16	5.4	40	23	17
25	3682202000	7	8	4	22	5.5	40	21	11.5
32	1827002286	6.6	8	5	18	6.6	50	24	16
32	1827001271	7	8	4 ±0,3	24	6.6	48	25	15.5
32	3662203000	7	8	5	24	5.5	47	26	16
40	1827002287	9	8	5	20	6.6	60	29.5	21.5
40	1827001272	10	10	4 ±0,3	28	6.6	56	26	17
40	3662204000	9	11	5	31	6.6	56	28	16
50	1827002288	9	8	6	24	9	68	30	22
50	1827001273	10	11	5 ±0,3	32	9	68	32	21.5
50	3662205000	9	12	6	33	6.6	63	35	22
63	1827002289	11	12	6	27	9	84	39	28.5
63	1827001498	10	13	5 ±0,3	32	9	78	34	21.5
63	3662206000	9	12	6	36	9	81	40	20.5
80	1827002290	11	12	8	30	11	102	36.5	24.5
80	1827001275	12	16	6 ±0,5	41	11	98	47	27
80	3662208000	12	15	8	43	9	95	45	26.5
100	1827002291	13.5	12	8	33	11	123	38.5	26.5
100	1827001276	14.5	19	6 ±0,5	41	11	117	52	26.5
100	3662210000	14	17	10	43	11	115	50	26
125	1827001310	16.5	20	8 ±1,0	45	13.5	144	69	35
160	1827001457	18.5	23	10 ±1,0	60	17.5	185	100	45
200	1827001458	24	26	12 ±1,0	70	17.5	220	120	47.5
250	1827001459	28	33	20 ±1,0	75	22	280	135	55
320	5239010502	35	45	23 ±1,0	85	26	350	200	65

Piston Ø	R	TG	TR
16	8	18 ±0,2	18
20	10	22 ±0,2	22
25	11	26 ±0,2	26
25	13.5	27	26
32	–	32	32
32	15	32,5 ±0,2	32
32	15	32	32
40	–	42	42
40	17.5	38 ±0,2	36
40	20	40	36
50	–	50	50
50	20	46,5 ±0,2	45
50	23	46	45
63	–	62	62
63	22.5	56,5 ±0,2	50

Foot mounting MS1, Series CM1

3662205000

Foot
mountings

2023-11-01

Piston Ø	R	TG	TR
63	23	59	50
80	–	82	82
80	22.5	72 ±0,2	63
80	26	73	63
100	–	103	103
100	27.5	89 ±0,2	75
100	32	90	75
125	30	110 ±0,3	90
160	32.5	140 ±0,3	115
200	37.5	175 ±0,3	135
250	45	220 ±0,3	165
320	55	270 ±0,3	200