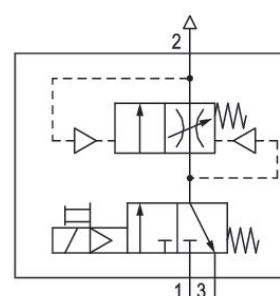


Filling unit, electrically operated, Series 652

G652A6S620A00F1



Technical data

| | |
|---------------------------|-----------------|
| Industry | Industrial |
| Activation | Electrically |
| Nominal flow Qn | 1500 l/min |
| Compressed air connection | G 1/4 |
| Working pressure min. | 3.8 bar |
| Working pressure max | 10 bar |
| Certificates | ATEX optional |
| ATEX | ATEX optional |
| Connection type | Pipe connection |
| Parts | Filling valve |
| Type | Poppet valve |
| Min. ambient temperature | -10 °C |

| | |
|-----------------------------------|---------------------------------|
| Max. ambient temperature | 50 °C |
| Min. medium temperature | -10 °C |
| Max. medium temperature | 50 °C |
| Medium | Compressed air Neutral gases |
| Nominal flow Qn 1 to 2 | 1500 l/min |
| Nominal flow Qn 2 to 3 | 2100 l/min |
| Operating voltage | 24 V |
| Connection type operating voltage | DC |
| Weight | 0.44 kg |

Material

| | |
|------------------|--------------------------|
| Housing material | Aluminum |
| Seal material | Nitrile butadiene rubber |
| Part No. | G652A6S620A00F1 |

Technical information

If P1 supply flow is restricted on valves with internal pilot supply, temporary leakage can occur.

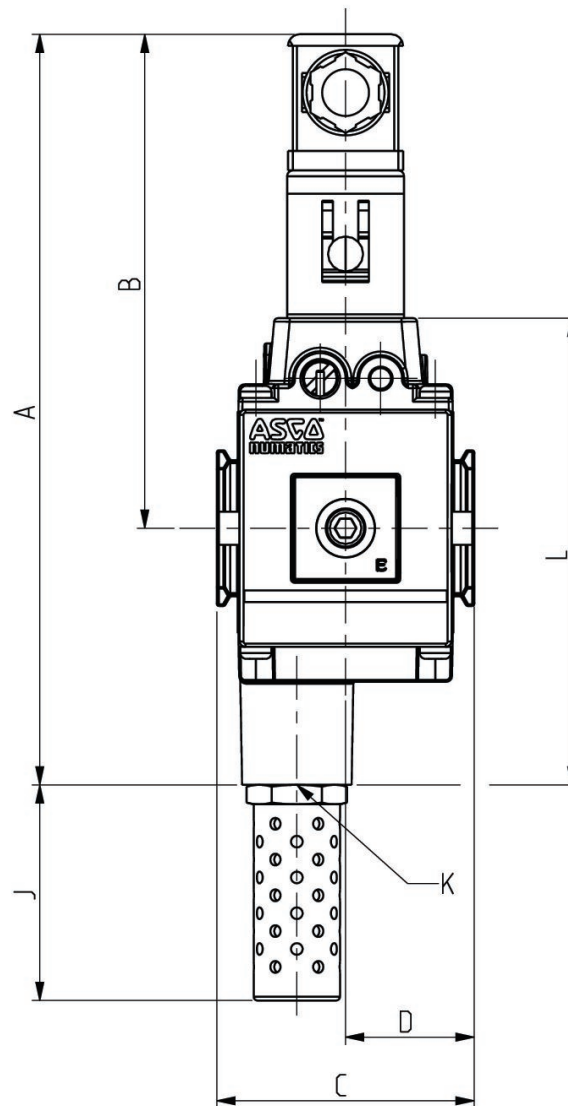
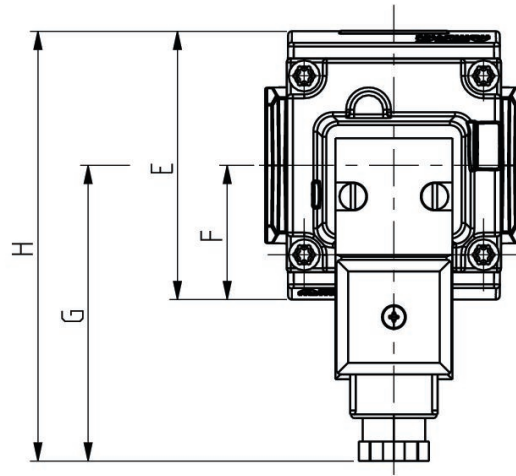
The min. control pressure must be adhered to, since otherwise faulty switching and valve failure may result!

The pressure dew point must be at least 15 °C less than ambient and medium temperature and may not exceed 3 °C.

The oil content of compressed air must remain constant during the life cycle.

Use only the approved oils from AVENTICS. Further information can be found in the "Technical information" document (available in <https://www.emerson.com/en-us/support>).

Dimensions



| Series | 652 |
|--------|-------|
| A | 193 |
| B | 127 |
| C | 66 |
| D | 33 |
| E | 69 |
| F | 34,5 |
| G | 76 |
| H | 110,5 |
| J | 57 |
| K | G 1/2 |
| L | 120 |

Accessories overview

