

# Rear eye with bolt

5210663472

Rear eye

2023-10-25

## AVENTICS Rear eyes



### Technical data

Industry

Industrial

Version

for clevis mounting MP2 and AB3

Standardization

CNOMO / NFE 49-001

Piston diameter

100 mm

### Material

Housing material

Aluminum

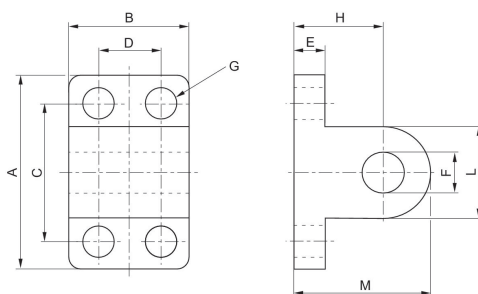
Surface housing

Cathodic dip-painted

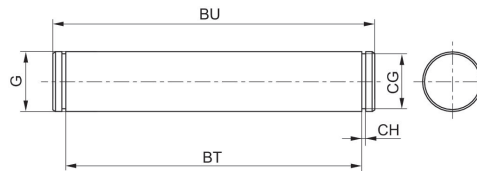
Part No.

5210663472

### Rear eye dimensions



## Bolt dimensions



Piston Ø	A	B	C	D	E	F H9	G	H	L 1)
32	40	25	28	-	8	8	7	18	16
40	52	32	38	16	10	12	9	26	24
50	52	32	38	16	10	12	9	26	24
63	75	46	54	25	12	16	11	34	36
80	75	46	54	25	12	16	11	34	36
100	115	56	90	32	16	20	14	41	40
125	115	56	90	32	16	20	14	41	40

Piston Ø	M 1)	BT	BU	CG	CH	G f7
32	26	46	53	7.6	1.1	8
40	38	53	60	11.5	1.1	12
50	38	66	73	11.5	1.1	12
63	52	76	83	15.2	1.1	16
80	52	96	103	15.2	1.1	16
100	61	117	124	19	1.3	20
125	61	142	149	19	1.3	20

1) max.