

# Mini cylinder, Series MNI

5226636200

AVENTICS  
Series  
MNI Mini  
cylinders  
(ISO 6432)

## AVENTICS Series MNI Mini cylinders (ISO 6432)

The AVENTICS Series MNI (ISO 6432) round cylinders for general machine construction are characterized by its robust and long service life.



### Technical data

|  |                                  |
|--|----------------------------------|
| Industry                               | Industrial                       |
| Standards                              | ISO 6432                         |
| Piston Ø                               | 25 mm                            |
| Stroke                                 | 220 mm                           |
| Ports                                  | G 1/8                            |
| Functional principle                   | Double-acting                    |
| Cushioning                             | Elastic cushioning               |
| Magnetic piston                        | Piston with magnet               |
| Environmental requirements             | Industry standard                |
| Piston rod thread - type               | External thread                  |
| Piston rod thread                      | M10x1,25                         |
| Piston rod                             | single                           |
| Cylinder special features              | With polymer bushing in rear eye |
| Scraper                                | Standard Industry Scraper        |
| Pressure for determining piston forces | 6,3 bar                          |
| Retracting piston force                | 260 N                            |
| Extracting piston force                | 309 N                            |
| Min. ambient temperature               | -25 °C                           |
| Max. ambient temperature               | 80 °C                            |

# Mini cylinder, Series MNI

5226636200

AVENTICS  
Series  
MNI Mini  
cylinders  
(ISO 6432)

2024-04-11

|  |  |
|--|--|
| Min. working pressure                              | 1 bar  |
| Max. working pressure                              | 10 bar   |
| Impact energy                                      | 0.35 J   |
| Weight   | 0.262 kg   |
| Weight 0 mm stroke                                 | 0.249 kg   |
| Weight +10 mm stroke                               | 0.013 kg   |
| Stroke max.  | 1300 mm  |
| Medium   | Compressed air                                     |
| Min. medium temperature                            | -25 °C   |
| Max. medium temperature                            | 80 °C  |
| Max. particle size                                 | 50 µm  |
| Min. oil content of compressed air                 | 0 mg/m <sup>3</sup>                                |
| Max. oil content of compressed air                 | 5 mg/m <sup>3</sup>                                |
| Clamping piece for magnetic field sensor necessary | Clamping piece for magnetic field sensor necessary |

## Material

|                           |  |
|---------------------------|--|
| Piston rod                | Stainless Steel                                |
| Piston material           | Brass<br>Aluminum                              |
| Scraper material          | Polyurethane                                   |
| Seal material             | Acrylonitrile butadiene rubber<br>Polyurethane |
| Material, front cover     | Aluminum                                       |
| Cylinder tube             | Stainless Steel                                |
| End cover                 | Aluminum                                       |
| Nut for cylinder mounting | Steel, chrome-plated                           |
| Nut for piston rod        | Steel, chrome-plated                           |
| Part No.                  | 5226636200                                     |

## Technical information

The pressure dew point must be at least 15 °C less than ambient and medium temperature and may not exceed 3 °C.

The oil content of compressed air must remain constant during the life cycle.

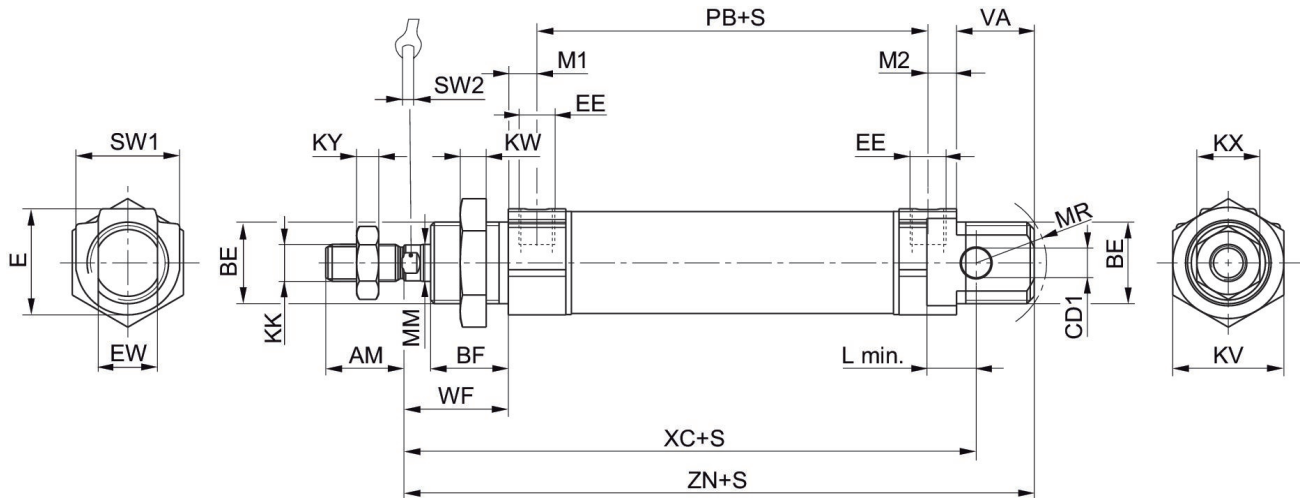
Use only the approved oils from AVENTICS. Further information can be found in the “Technical information” document (available in <https://www.emerson.com/en-us/support>).

# Mini cylinder, Series MNI

5226636200

AVENTICS  
Series  
MNI Mini  
cylinders  
(ISO 6432)

## Dimensions



S = stroke

| Piston Ø | AM-2 | BE       | BF | CD1 H10 | E    | EE t = depth of thread | EW d13 | KK       | KV |
|----------|------|----------|----|---------|------|------------------------|--------|----------|----|
| 10       | 12   | M12x1,25 | 11 | 4       | 14   | M5 t=5                 | 8      | M4       | 17 |
| 12       | 16   | M16x1,5  | 16 | 6       | 19   | M5 t=5                 | 12     | M6       | 22 |
| 16       | 16   | M16x1,5  | 16 | 6       | 19   | M5 t=5                 | 12     | M6       | 22 |
| 20       | 20   | M22x1,5  | 18 | 8       | 28.6 | G 1/8 t=8              | 16     | M8       | 30 |
| 25       | 22   | M22x1,5  | 21 | 8       | 28.6 | G 1/8 t=8              | 16     | M10x1,25 | 30 |

| Piston Ø | KW  | KX | KY  | L min | MM f8 | M1/M2 | MR | PB ±1 | VA |
|----------|-----|----|-----|-------|-------|-------|----|-------|----|
| 10       | 5.5 | 7  | 2.2 | 6     | 4     | 4.8   | 12 | 37    | 11 |
| 12       | 6   | 10 | 3.2 | 9     | 6     | 4.8   | 16 | 41    | 16 |
| 16       | 6   | 10 | 3.2 | 9     | 6     | 4.8   | 16 | 47    | 17 |
| 20       | 7   | 13 | 4   | 12    | 8     | 7.7   | 18 | 51    | 19 |
| 25       | 7   | 17 | 6   | 12    | 10    | 7.7   | 19 | 55    | 21 |

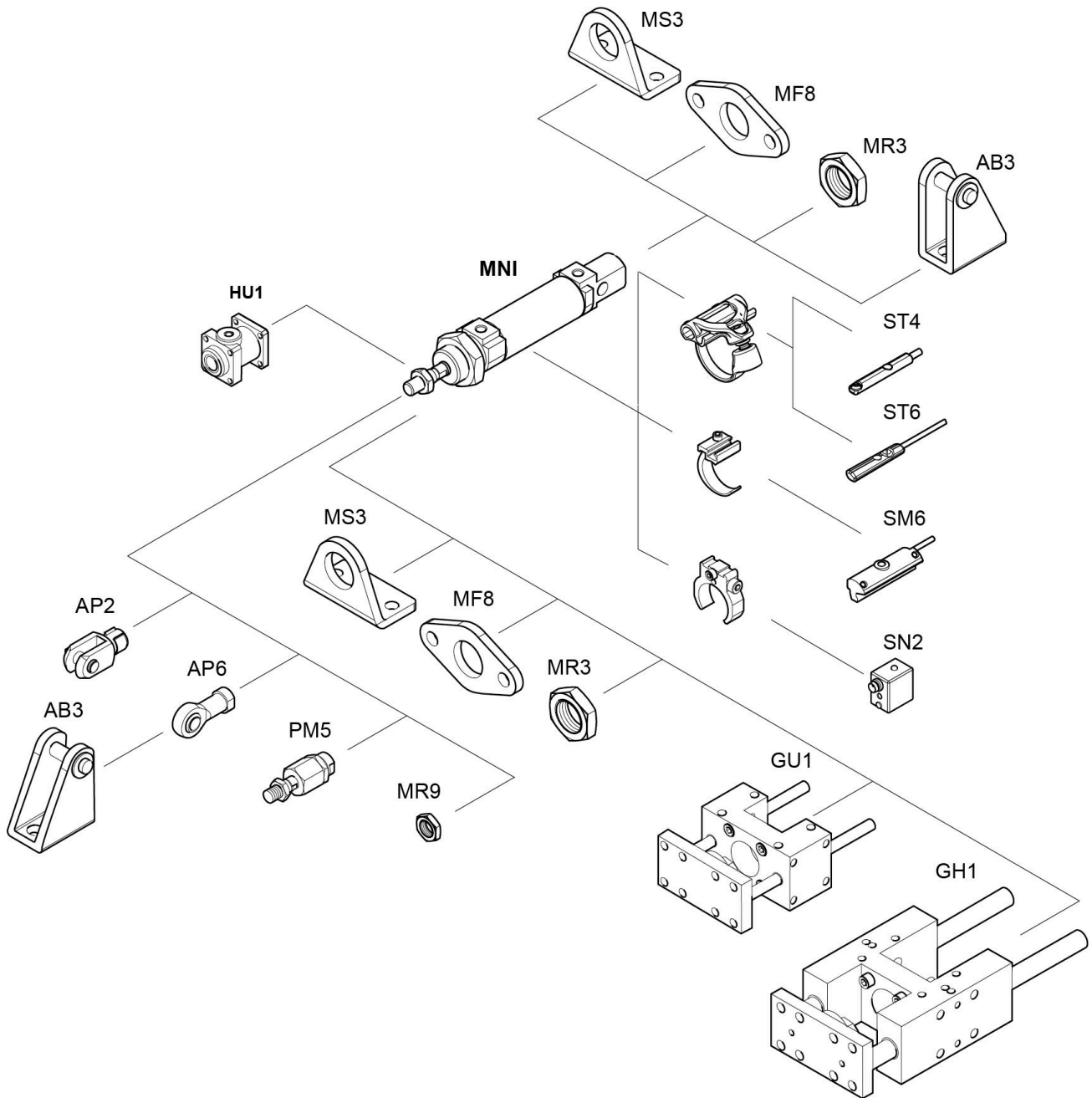
| Piston Ø | WF ±1,4 | XC ±1 | ZN ± 1,4 | SW 1 | SW 2 |
|----------|---------|-------|----------|------|------|
| 10       | 16      | 64    | 73.5     | 13   | 3    |
| 12       | 22      | 75    | 88.5     | 19   | 5    |
| 16       | 22      | 82    | 95.5     | 19   | 5    |
| 20       | 24      | 95    | 109.5    | 28   | 6    |
| 25       | 28      | 104   | 119.5    | 28   | 8    |

# Mini cylinder, Series MNI

5226636200

AVENTICS  
Series  
MNI Mini  
cylinders  
(ISO 6432)

## Overview drawing



NOTE: This overview drawing is only for orientation to indicate where the various accessory parts can be fastened to the cylinder. The illustration has been simplified for this purpose. It is thus not possible to derive the dimensions from this overview.