

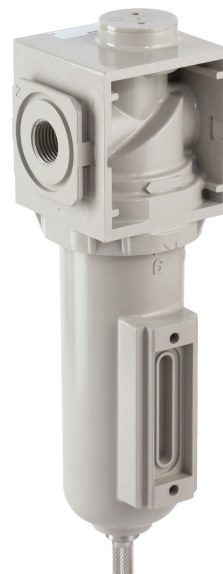
Filter, Series 645

2023-11-27

G645ABBK2JA000Q

Series 645

The Series 645 Railway Regulators are used to regulate the pressure on railway applications such as control brakes, horns, pantographs, and sanding systems to increase wheel-to-rail friction in poor weather conditions. They are available in four versions, including high and low flow, in ported or subbase mounted configurations. The units meet railway regulations for Fire Safety (EN 45545: HL3), Shock & Vibration (EN 61373: Cat 1 Class B), and Corrosion Resistance (ISO 9227). These robust, high flow products are available with up to 10 bar (145 PSI) output pressure and three different adjustment methods including screw, t-handle, or lockable knob.



Technical data

Industry	Rail
Parts	Filter
Port	G 1/4
Filter porosity	5 µm
Nominal flow Qn	1250 l/min
Condensate drain	Manual
Min. working pressure	0 bar
Max. working pressure	16 bar
Min. ambient temperature	-40 °C
Max. ambient temperature	70 °C
Medium	Compressed air
Weight	0.513 kg

Material

Housing material	Aluminum
Seal material	Nitrile butadiene rubber
Material filter insert	Borosilicate glass fiber Polyester
Material condensate drain	Stainless Steel

Filter, Series 645

2023-11-27

G645ABBK2JA000Q

Part No.

G645ABBK2JA000Q

Technical information

Max. achievable compressed air class acc. to ISO 8573-1:2010 5 : 8 : 4 (5 µm filter porosity) und 6 : 8 : 4 (25µm filter porosity)

Other filter porosities on request.

Filter, Series 645

2023-11-27

G645ABBK2JA000Q

Dimensions in mm (inch)

