

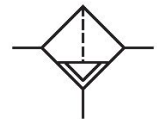
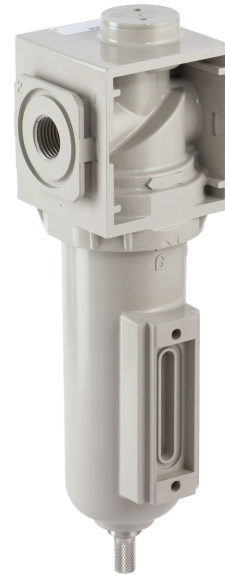
# Filter, Series 645

2023-11-27

8645AFDK2JA000Q

## Series 645

The Series 645 Railway Regulators are used to regulate the pressure on railway applications such as control brakes, horns, pantographs, and sanding systems to increase wheel-to-rail friction in poor weather conditions. They are available in four versions, including high and low flow, in ported or subbase mounted configurations. The units meet railway regulations for Fire Safety (EN 45545: HL3), Shock & Vibration (EN 61373: Cat 1 Class B), and Corrosion Resistance (ISO 9227). These robust, high flow products are available with up to 10 bar (145 PSI) output pressure and three different adjustment methods including screw, t-handle, or lockable knob.



## Technical data

|                          |                   |
|--------------------------|-------------------|
| Industry                 | Rail              |
| Parts                    | Filter            |
| Port                     | 1/4 NPT           |
| Filter porosity          | 0.3 $\mu\text{m}$ |
| Nominal flow $Q_n$       | 480 l/min         |
| Condensate drain         | Manual            |
| Min. working pressure    | 0 bar             |
| Max. working pressure    | 16 bar            |
| Min. ambient temperature | -40 °C            |
| Max. ambient temperature | 70 °C             |
| Medium                   | Compressed air    |
| Weight                   | 0.339 kg          |

## Material

|                           |                                       |
|---------------------------|---------------------------------------|
| Housing material          | Aluminum                              |
| Seal material             | Nitrile butadiene rubber              |
| Material filter insert    | Borosilicate glass fiber<br>Polyester |
| Material condensate drain | Stainless Steel                       |

# Filter, Series 645

2023-11-27

8645AFDK2JA000Q

---

Part No.

8645AFDK2JA000Q

## Technical information

Max. achievable compressed air class acc. to ISO 8573-1:2010 3 : 7 : 3 (0,3 µm filter porosity) and 2 : 7 : 2 (0,01 µm filter porosity)

Other filter porosities on request.

# Filter, Series 645

2023-11-27

8645AFDK2JA000Q

Dimensions in mm (inch)

