

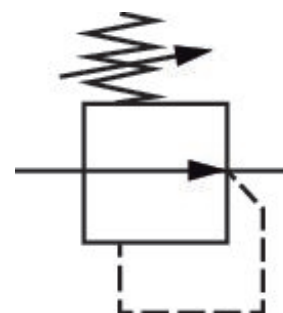
# Pressure regulator, Series 645

## T645ATS100A00H0

### General series information

#### AVENTICS Series 645 Pressure Regulator

- The Series 645 Railway Regulators are used to regulate the pressure on railway applications such as control brakes, horns, pantographs, and sanding systems to increase wheel-to-rail friction in poor weather conditions. They are available in four versions, including high and low flow, in ported or subbase mounted configurations. The units meet railway regulations for Fire Safety (EN 45545: HL3), Shock & Vibration (EN 61373: Cat 1 Class B), and Corrosion Resistance (ISO 9227). These robust, high flow products are available with up to 10 bar (145 PSI) output pressure and three different adjustment methods including screw, t-handle, or lockable knob.



### Technical data

Industry	Rail
Function	low flow, base mounted
Parts	Pressure regulator
Adjustment Type	adjustment screw
Pressure gauge	without pressure gauge
Mounting orientation	Any
Port	Base plate
Nominal flow Qn	198 l/min
Regulation range min.	0.5 bar
Regulation range max.	10 bar
Working pressure min.	1 bar
Working pressure max	14 bar

Min. ambient temperature	-40 °C
Max. ambient temperature	70 °C
Medium	Compressed air
Min. medium temperature	-40 °C
Max. medium temperature	70 °C
Weight	0.153 kg

## Material

Housing material	Aluminum Brass Polyamide
Surface housing	anodized
Seal material	Acrylonitrile butadiene rubber
Part No.	T645ATS100A00H0

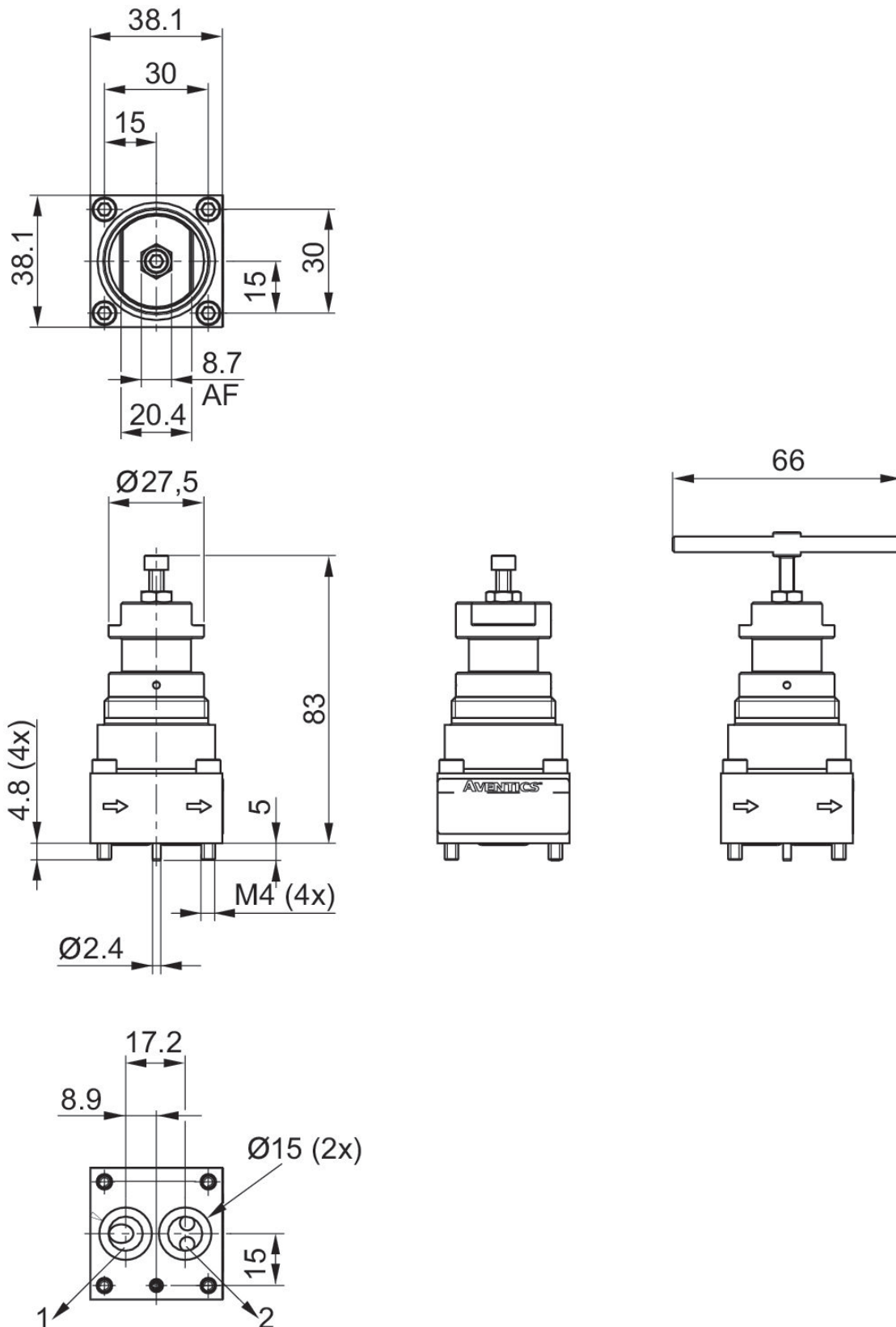
## Technical information

The min. control pressure must be adhered to, since otherwise faulty switching and valve failure may result!

The pressure dew point must be at least 15 °C under ambient and medium temperature and may not exceed 3 °C .

The oil content of compressed air must remain constant during the life cycle.

## Dimensions



- 1) Port 1 (Input)
- 2) Port 2 (Output)