

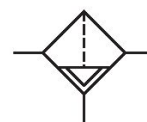
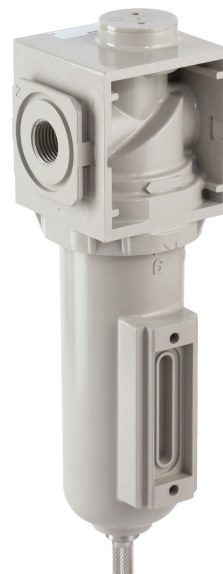
Filter, Series 646

2023-11-28

8646AFDK4JA000Q

Series 646

The Series 646 Railway Filters are designed for the unique needs of the railway industry. The units meet railway regulations for Fire Safety (EN 45545: HL3), Shock & Vibration (EN 61373: Cat 1 Class B), and Corrosion Resistance (ISO 9227).



Technical data

Industry	Rail
Parts	Filter
Port	1/2 NPT
Filter porosity	0.3 μm
Nominal flow Qn	870 l/min
Condensate drain	Manual
Min. working pressure	0 bar
Max. working pressure	16 bar
Min. ambient temperature	-40 °C
Max. ambient temperature	70 °C
Medium	Compressed air
Weight	0.509 kg

Material

Housing material	Aluminum
Seal material	Nitrile butadiene rubber
Material filter insert	Borosilicate glass fiber Polyester
Material condensate drain	Stainless Steel

Filter, Series 646

2023-11-28

8646AFDK4JA000Q

Part No.

8646AFDK4JA000Q

Technical information

Max. achievable compressed air class acc. to ISO 8573-1:2010 3 : 7 : 3 (0,3 µm filter porosity) and 2 : 7 : 2 (0,01 µm filter porosity)

Other filter porosities on request.

Filter, Series 646

2023-11-28

8646AFDK4JA000Q

Dimensions in mm (inch)

