

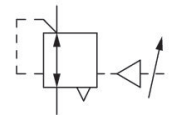
Pressure regulator, Series AS2-RGS

2024-03-19

R412006094

Series AS2

The AVENTICS Series AS2 is a modular, versatile maintenance unit for universal application. This Series offers compact dimensions, is highly efficient, lightweight and easy-to-use. The AVENTICS Series AS guarantees reliability, safety, and efficiency with a simplified assembly and maintenance efforts.



Technical data

Industry	Industrial
Function	Standard pressure regulator
Parts	Pressure regulator
Pressure gauge	without pressure gauge
Mounting orientation	Any
Regulator type	Diaphragm-type pressure regulator
Port	G 1/4
Nominal flow Qn	2700 l/min
Min. regulation range	0.5 bar
Max. regulation range	16 bar
Min. working pressure	0 bar
Max. working pressure	16 bar
Min. ambient temperature	0 °C
Max. ambient temperature	50 °C
Activation	Pneumatically
Regulator function	with relieving air exhaust
Regulator type	Can be assembled into blocks
Pressure supply	single
Lock type	not lockable

Pressure regulator, Series AS2-RGS

2024-03-19

R412006094

Medium	Compressed air Neutral gases
Weight	0.314 kg

Material

Housing material	Polyamide
Material front plate	Acrylonitrile butadiene styrene
Seal material	Acrylonitrile butadiene rubber
Material threaded bushing	Die cast zinc
Part No.	R412006094

Technical information

The pressure dew point must be at least 15 °C less than ambient and medium temperature and may not exceed 3 °C.

The rear pressure gauge connection on the pressure regulator is closed with a blanking plug, the front connection is open. Depending on the customer application, a second blanking plug may be necessary. Please order separately (see accessories).

A change in the flow direction (from air supply on the left to air supply on the right) occurs by rotating installation by 180° about the vertical axis. Please see the operating instructions for further details.

Relieving exhaust (≤ 0.3 bar over set pressure)

With rear exhaust (>3 bar)

Nominal flow Q_n with secondary pressure $p_2 = 6$ bar at $\Delta p = 1$ bar

Control pressure: see diagram

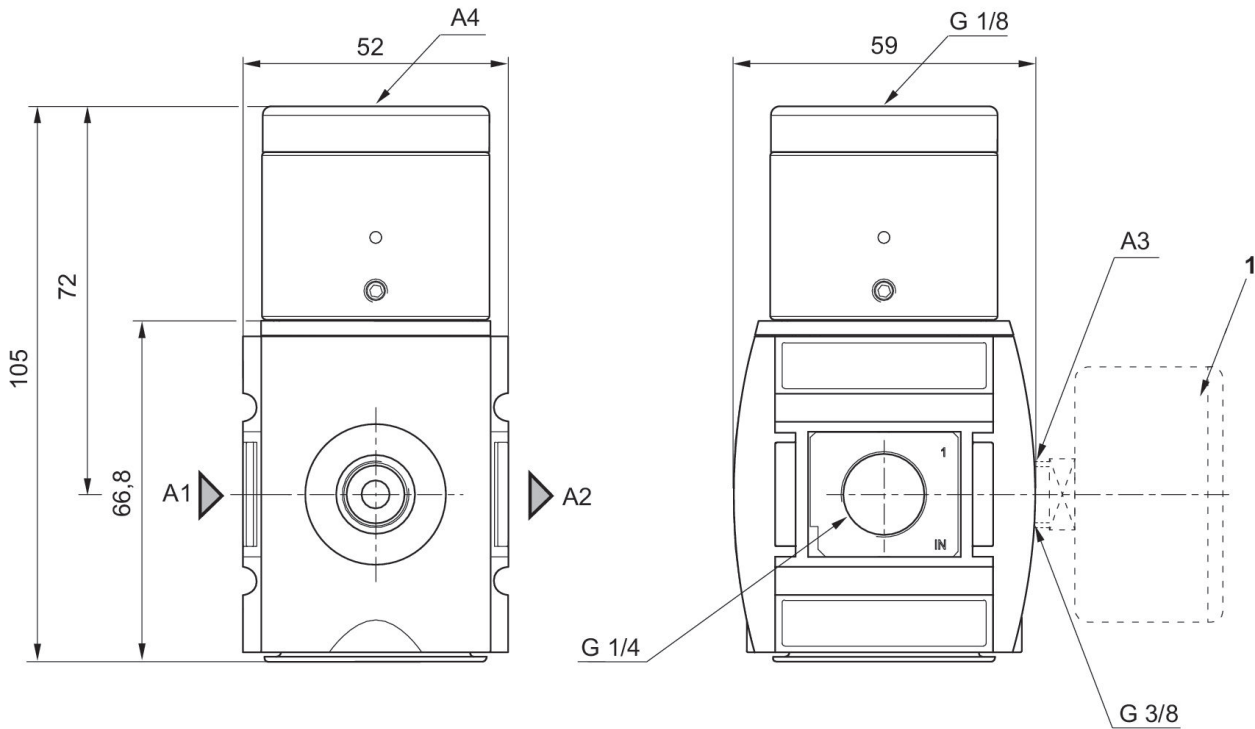
Order pressure gauge separately

Pressure regulator, Series AS2-RGS

2024-03-19

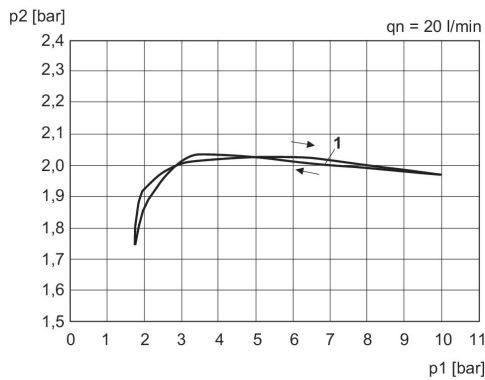
R412006094

Dimensions in mm



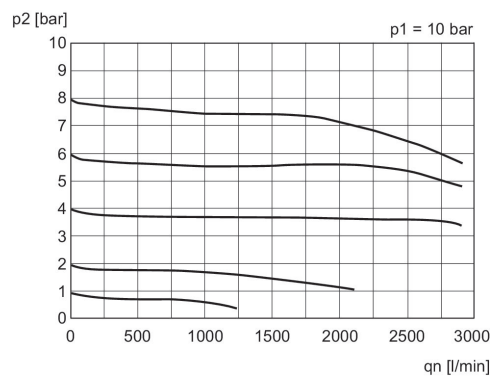
- A1 = input
- A2 = output
- A3 = pressure gauge connection
- A4 = control pressure connection
- 1) Order pressure gauge separately

Pressure characteristics curve



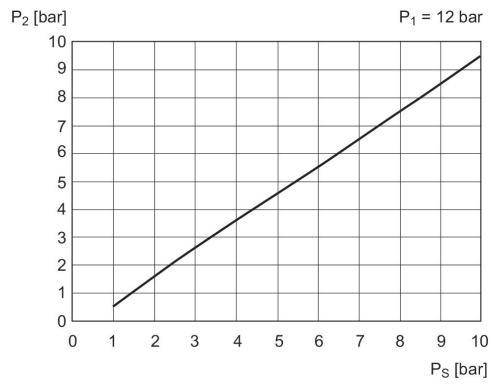
- p1 = Working pressure
- p2 = Secondary pressure
- qn = Nominal flow
- 1) Starting point

Flow rate characteristic (p2: 0,5 - 8 bar)



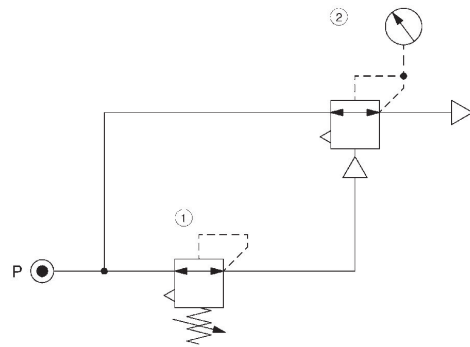
- p1 = Working pressure
- p2 = Secondary pressure
- qn = Nominal flow

control pressure characteristic



p_1 = Working pressure
 p_2 = Secondary pressure
 P_S = control pressure

Application example



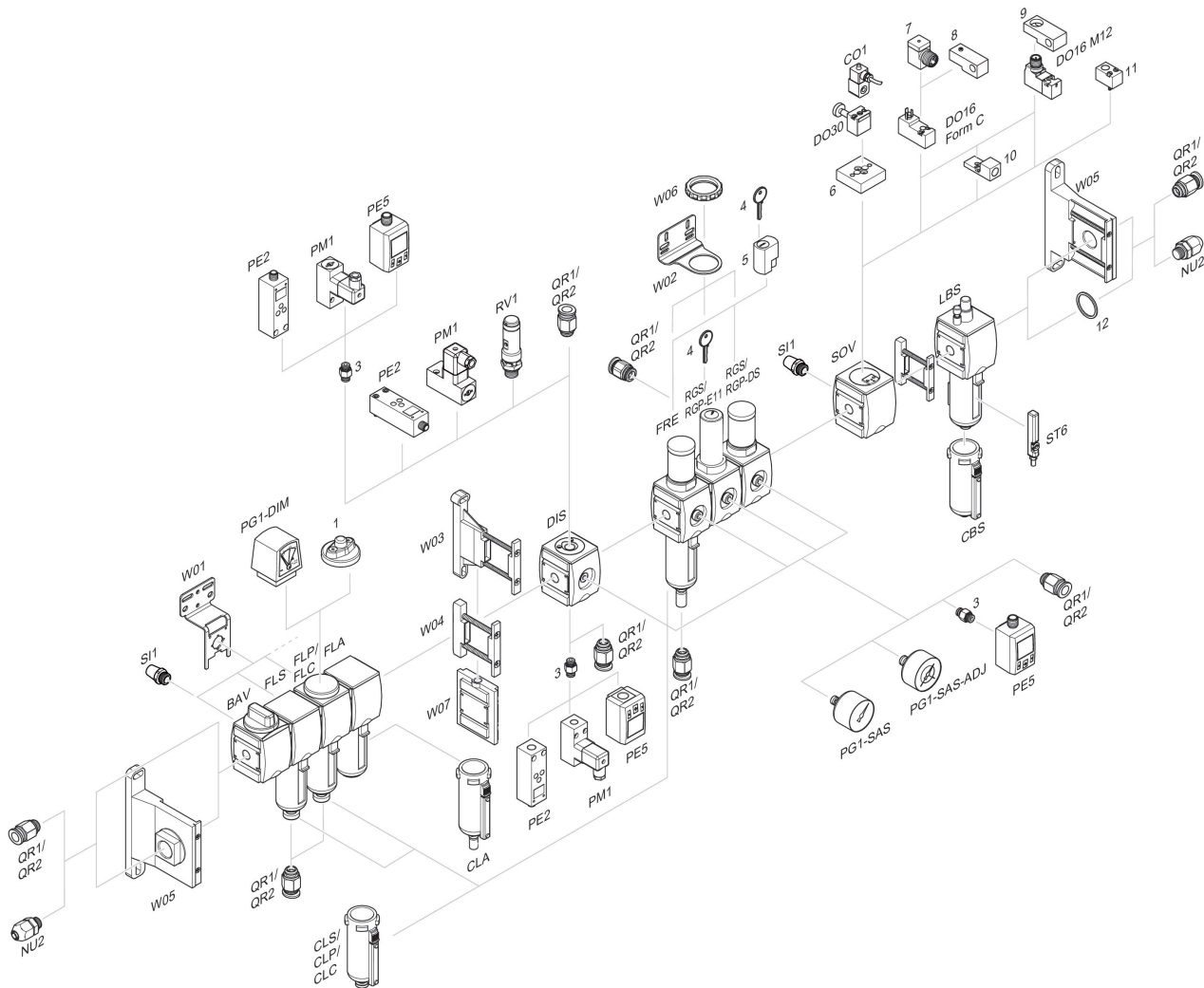
- 1) Precision pressure regulator
- 2) Pressure regulator valve, pneumatically operated

Pressure regulator, Series AS2-RGS

2024-03-19

R412006094

Accessories overview



1 = contamination display 3 = Double nipple 4 = Key for E11 locking 5 = mortise lock 6 = Transition plate DO30 7 = Adapter, Series CON-VP 8 = Mounting aid DO16, form C 9 = Mounting aid DO16, M12 10 = Adapter for external pilot air 11 = Adapter pneumatic operation 12 = Sealing ring