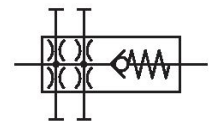


## Series AS3

The AVENTICS Series AS3 is a modular, versatile maintenance unit for universal application. This Series offers compact dimensions, is highly efficient, lightweight and easy-to-use. The AVENTICS Series AS guarantees reliability, safety, and efficiency with a simplified assembly and maintenance efforts.



## Technical data

Industry	Industrial
Parts	Distributor
Port	G 1/2
Type	Non-return valve
Type	Can be assembled into blocks
Version	Distributor 4x
Mounting orientation	Any
Min. working pressure	0.4 bar
Max. working pressure	16 bar
Min. ambient temperature	-10 °C
Max. ambient temperature	50 °C
Medium	Compressed air Neutral gases
Nominal flow Qn	5100 l/min
Nominal flow Qn 1 to 2	5100 l/min
Nominal flow Qn 1 to 3	3300 l/min
Nominal flow Qn 1 to 4	2250 l/min
Nominal flow Qn 1 to 5	2250 l/min
Nominal flow Qn 1 to 6	2250 l/min
Weight	0.32 kg

R412007255

---

Housing material	Polyamide
Material front plate	Acrylonitrile butadiene styrene
Seal material	Acrylonitrile butadiene rubber
Material threaded bushing	Die cast zinc
	R412007255

## Technical information

The pressure dew point must be at least 15 °C less than ambient and medium temperature and may not exceed 3 °C.

Suitable for direct mounting of a PE2 and PM1 series pressure sensor (flange version).

Nominal flow  $Q_n$  with secondary pressure  $p_2 = 6$  bar at  $\Delta p = 1$  bar

A change in the flow direction (from air supply on the left to air supply on the right) occurs by rotating installation by 180° about the vertical axis. Please see the operating instructions for further details.

4 auxiliary air exits upstream of non-return valve.

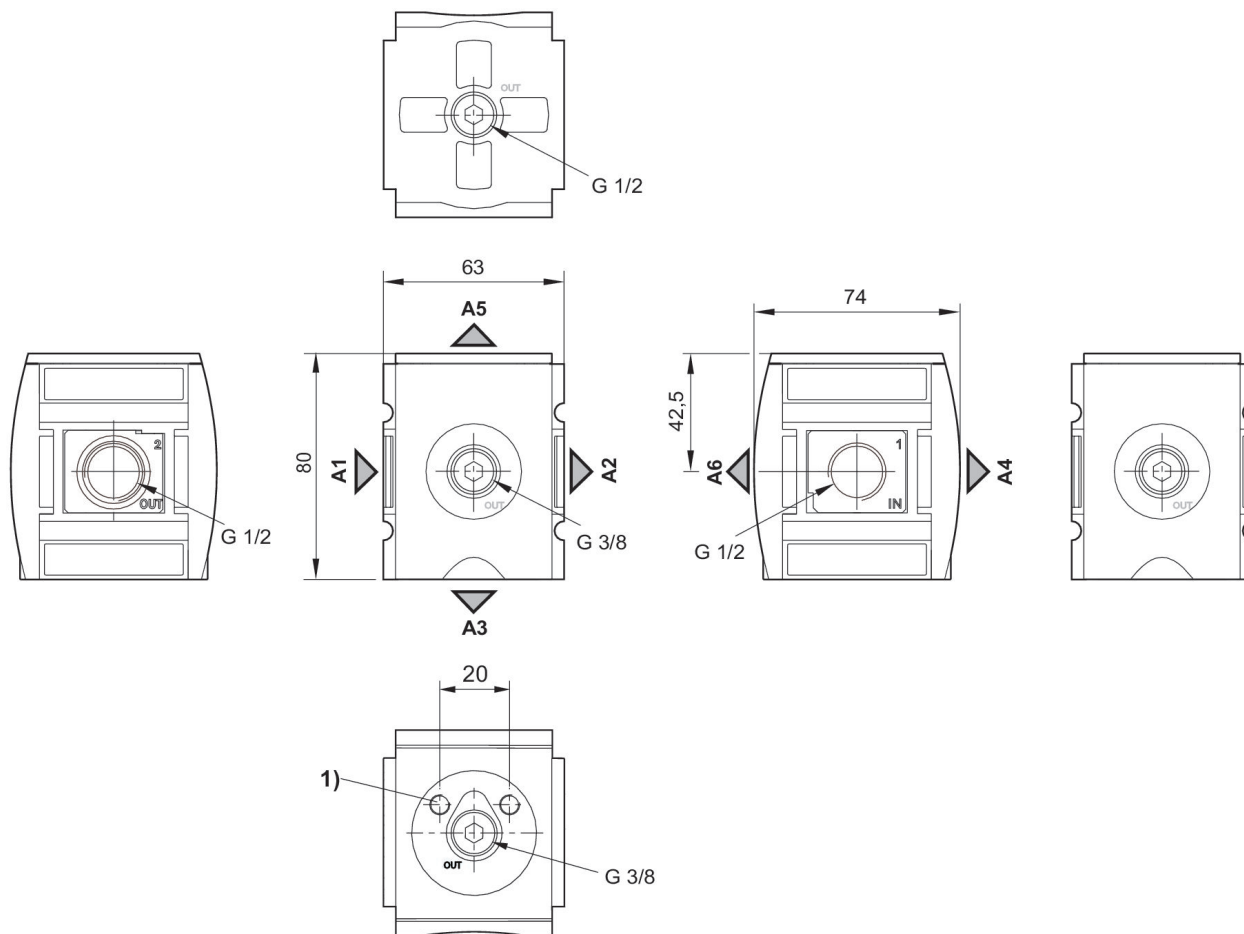
The delivered product may vary from that in the illustration.

# Distributor, Series AS3-DIN

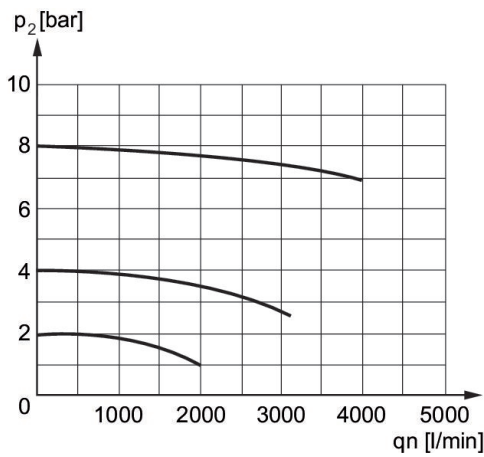
2024-05-22

R412007255

## Dimensions in mm

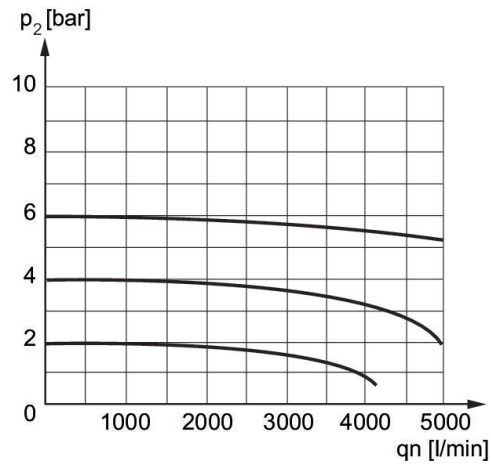


- A1 = input
- A2 = output
- A3 = output
- A4 = output
- A5 = output
- A6 = output



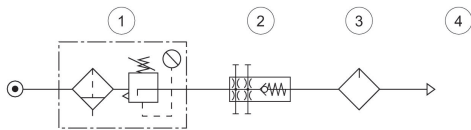
Nominal flow 1 > 3  
 p2 = Secondary pressure  
 qn = Nominal flow

Flow rate characteristic, p2 = 0,05 - 7 bar



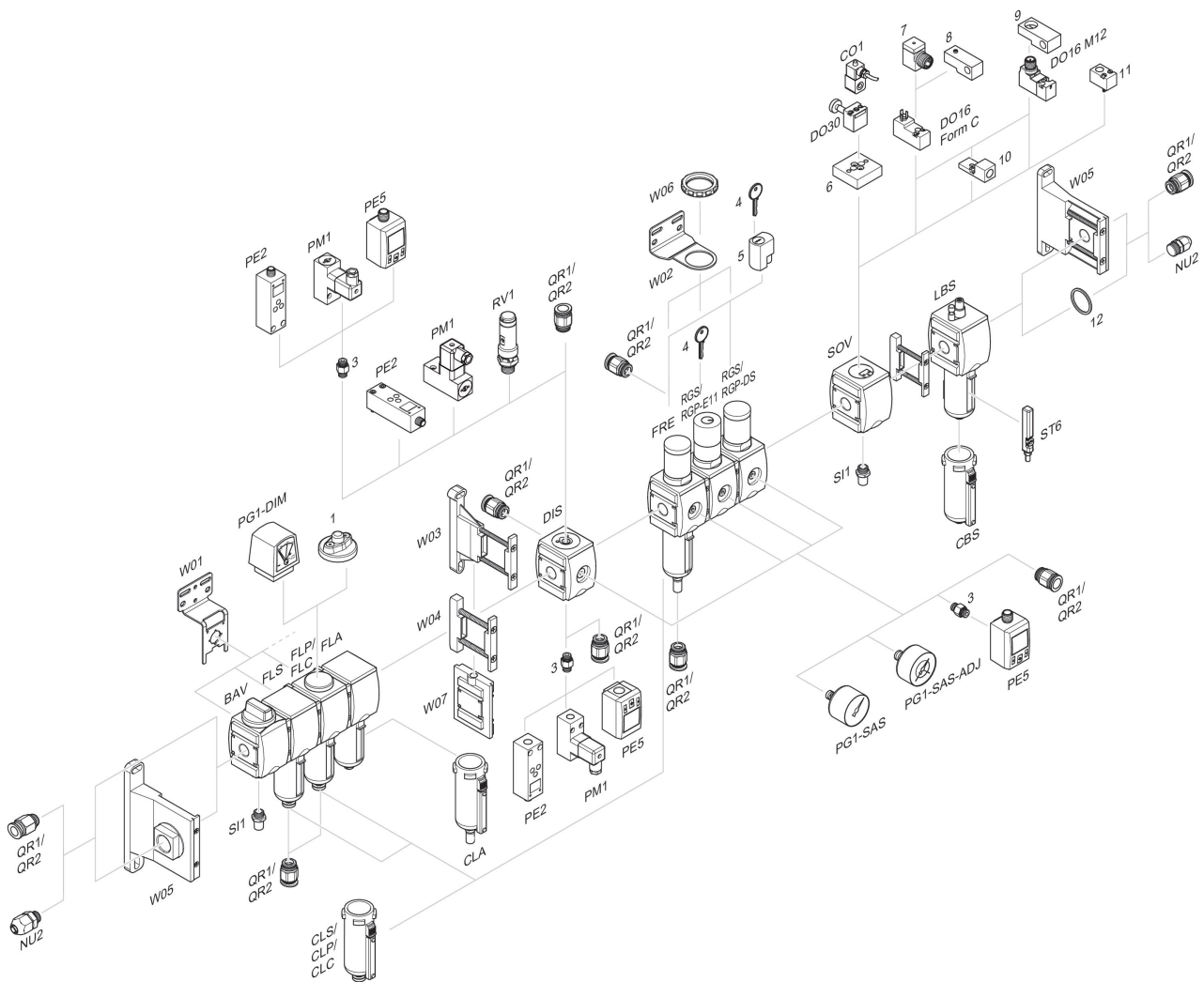
Nominal flow Qn 1 to 2  
 p2 = Secondary pressure  
 qn = Nominal flow

## usage



- 1) Filter pressure regulator
- 2) Non-return valve
- 3) Lubricator
- 4) Compressed air

## Accessories overview



1 = contamination display 3 = Double nipple 4 = Key for E11 locking 5 = mortise lock 6 = Transition plate DO30 7 = Adapter, Series CON-VP 8 = Mounting aid DO16, form C 9 = Mounting aid DO16, M12 10 = Adapter for external pilot air 11 = Adapter pneumatic operation 12 = Sealing ring