

# 3/2-directional valve, pneumatically operated, Series AS3-SOV

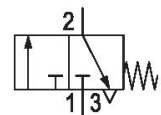
R412007263

Series AS3

2024-05-22

## Series AS3

The AVENTICS Series AS3 is a modular, versatile maintenance unit for universal application. This Series offers compact dimensions, is highly efficient, lightweight and easy-to-use. The AVENTICS Series AS guarantees reliability, safety, and efficiency with a simplified assembly and maintenance efforts.



## Technical data

Industry	Industrial
Activation	Pneumatically
Parts	3/2-directional valve
Nominal flow Qn	4500 l/min
Compressed air connection	G 1/2
Min. working pressure	0 bar
Max. working pressure	16 bar
Connection type	Pipe connection
Sealing principle	Soft seal
Type	Poppet valve
Can be assembled into blocks	Can be assembled into blocks
Min. control pressure	2.5 bar
Max. control pressure	16 bar
Min. ambient temperature	-10 °C
Max. ambient temperature	50 °C
Medium	Compressed air Neutral gases
Compressed air connection pilot exhaust	G 1/8
Compressed air connection, exhaust	G 1/2
Nominal flow Qn 1 to 2	4500 l/min

# 3/2-directional valve, pneumatically operated, Series AS3-SOV

Series AS3

2024-05-22

R412007263

Nominal flow Qn 2 to 3

3200 l/min

Weight

0.459 kg

## Material

Housing material

Polyamide

Seal material

Acrylonitrile butadiene rubber

Material, front cover

Acrylonitrile butadiene styrene

Material threaded bushing

Die cast zinc

Part No.

R412007263

## Technical information

The pressure dew point must be at least 15 °C less than ambient and medium temperature and may not exceed 3 °C.

Nominal flow Qn with secondary pressure p2 = 6 bar at  $\Delta p = 1$  bar

A change in the flow direction (from air supply on the left to air supply on the right) occurs by rotating installation by 180° about the vertical axis. Please see the operating instructions for further details.

The delivered product may vary from that in the illustration.

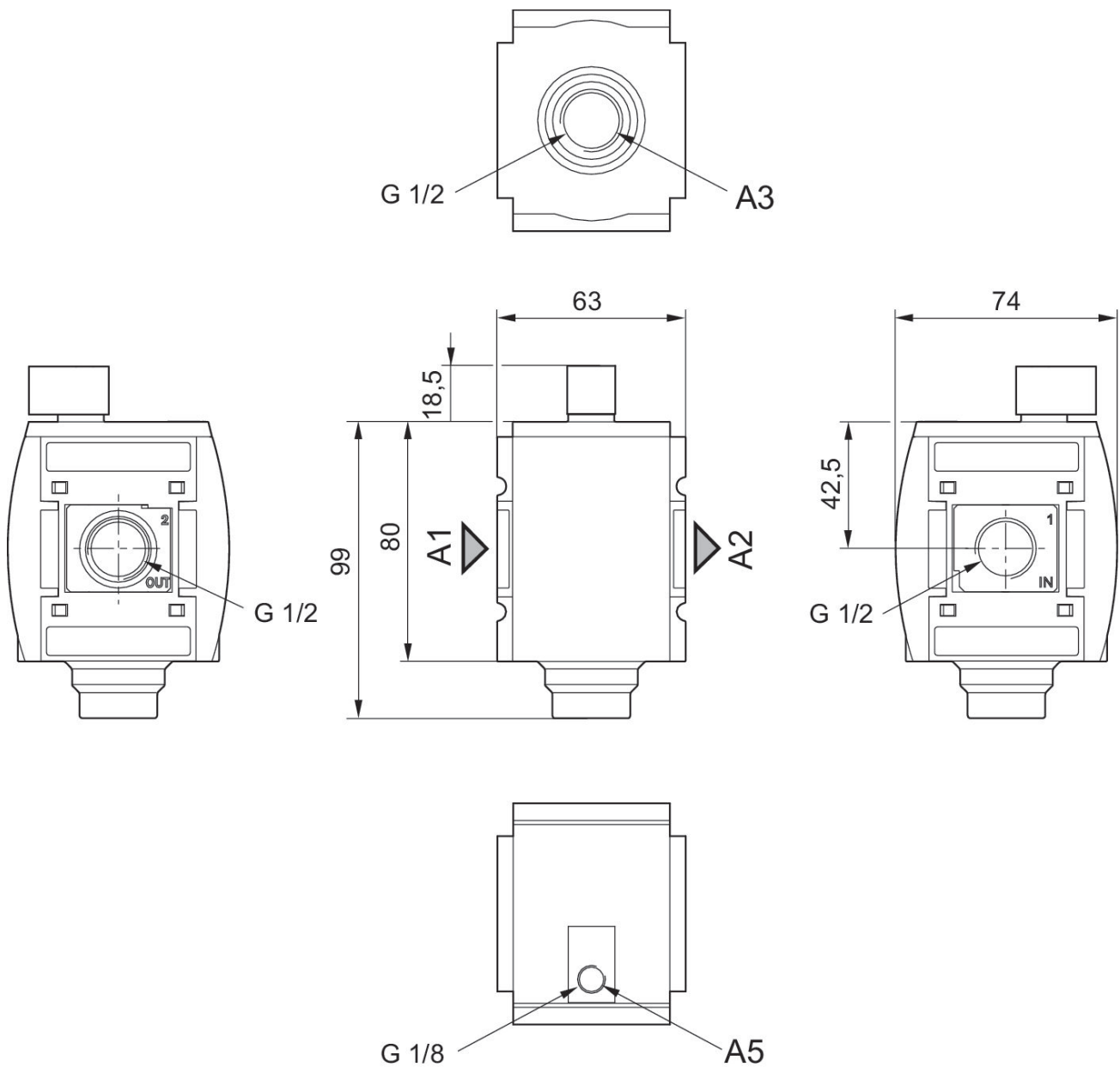
# 3/2-directional valve, pneumatically operated, Series AS3-SOV

Series AS3

2024-05-22

R412007263

Dimensions in mm



A1 = input  
A2 = output  
A3 = ventilation port  
A5 = Control pressure connection

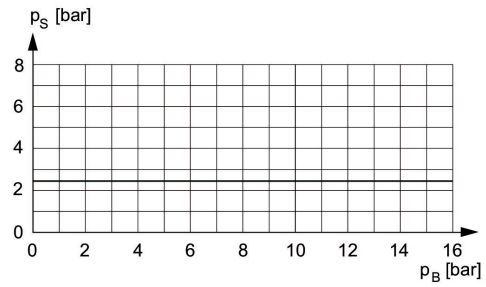
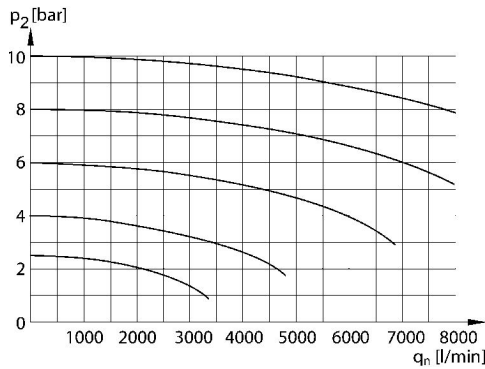
# 3/2-directional valve, pneumatically operated, Series AS3-SOV

Series AS3

2024-05-22

R412007263

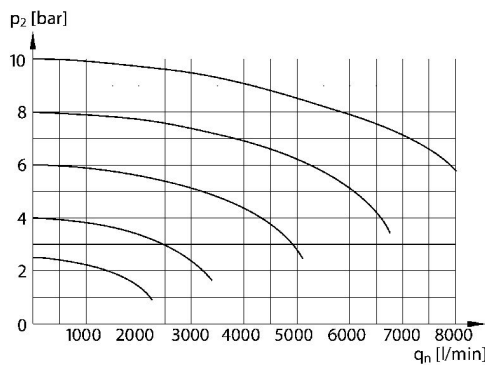
Flow rate characteristic,  $p_2 = 0,05 - 7$  bar  
control pressure characteristic



minimum pilot pressure depending on working pressure  
PS = control pressure  
PB = Working pressure

$p_2$  = Secondary pressure  
 $q_n$  = Nominal flow

## Rear exhaust



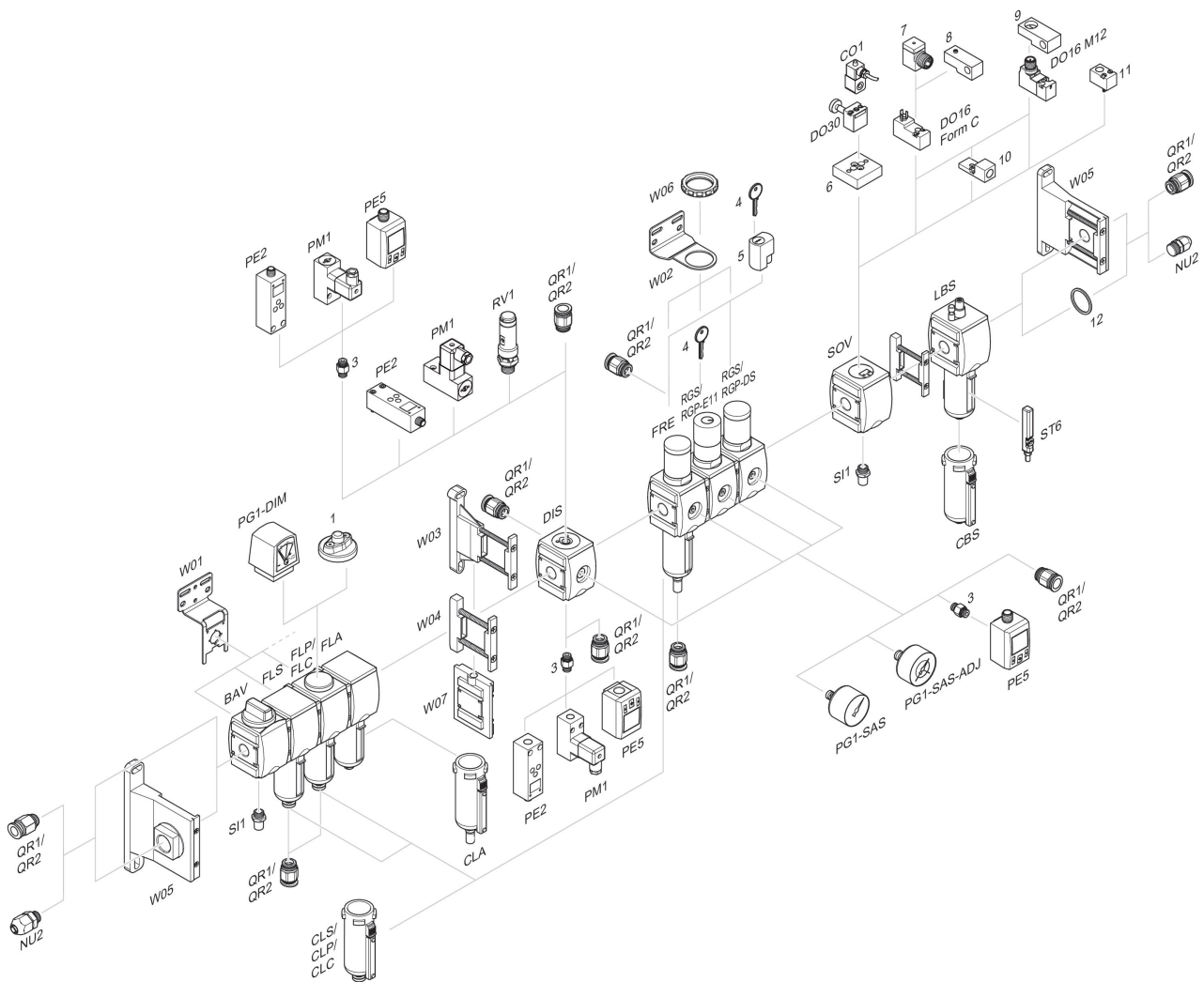
$p_2$  = Secondary pressure  
 $q_n$  = Nominal flow

# 3/2-directional valve, pneumatically operated, Series AS3-SOV

Series AS3

2024-05-22

R412007263  
Accessories overview



1 = contamination display 3 = Double nipple 4 = Key for E11 locking 5 = mortise lock 6 = Transition plate DO30 7 = Adapter, Series CON-VP 8 = Mounting aid DO16, form C 9 = Mounting aid DO16, M12 10 = Adapter for external pilot air 11 = Adapter pneumatic operation 12 = Sealing ring