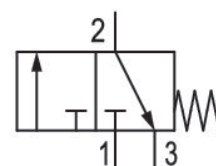


# 3/2-directional valve, electrically operated, Series AS5-SOV

R412009268

## General series information Series AS5

- The AVENTICS Series AS5 is a modular, versatile maintenance unit for universal application. This Series offers compact dimensions, is highly efficient, lightweight and easy-to-use. The AVENTICS Series AS guarantees reliability, safety, and efficiency with a simplified assembly and maintenance efforts.



## Technical data

|                                       |                                 |
|---------------------------------------|---------------------------------|
| Industry                              | Industrial                      |
| Activation                            | Electrically                    |
| Nominal flow Qn                       | 12500 l/min                     |
| Compressed air connection             | G 1                             |
| Working pressure min.                 | 2.5 bar                         |
| Working pressure max                  | 16 bar                          |
| Sealing principle                     | soft seal                       |
| Connection type                       | Pipe connection                 |
| Parts                                 | 3/2-directional valve           |
| Can be assembled into blocks          | Can be assembled into blocks    |
| basic valve with electrical connector | Basic valve without pilot valve |
| Type                                  | Poppet valve                    |
| Min. ambient temperature              | -10 °C                          |

---

|                                    |                                 |
|------------------------------------|---------------------------------|
| Max. ambient temperature           | 50 °C                           |
| Medium                             | Compressed air<br>Neutral gases |
| Max. particle size                 | 5 µm                            |
| Compressed air connection, exhaust | G 1/2                           |
| Nominal flow Qn 1 to 2             | 12500 l/min                     |
| Nominal flow Qn 2 to 3             | 3700 l/min                      |
| Weight                             | 0.641 kg                        |

## Material

|                           |                                 |
|---------------------------|---------------------------------|
| Housing material          | Polyamide                       |
| Seal material             | Acrylonitrile butadiene rubber  |
| Material threaded bushing | Die cast zinc                   |
| Material front plate      | Acrylonitrile butadiene styrene |
| Part No.                  | R412009268                      |

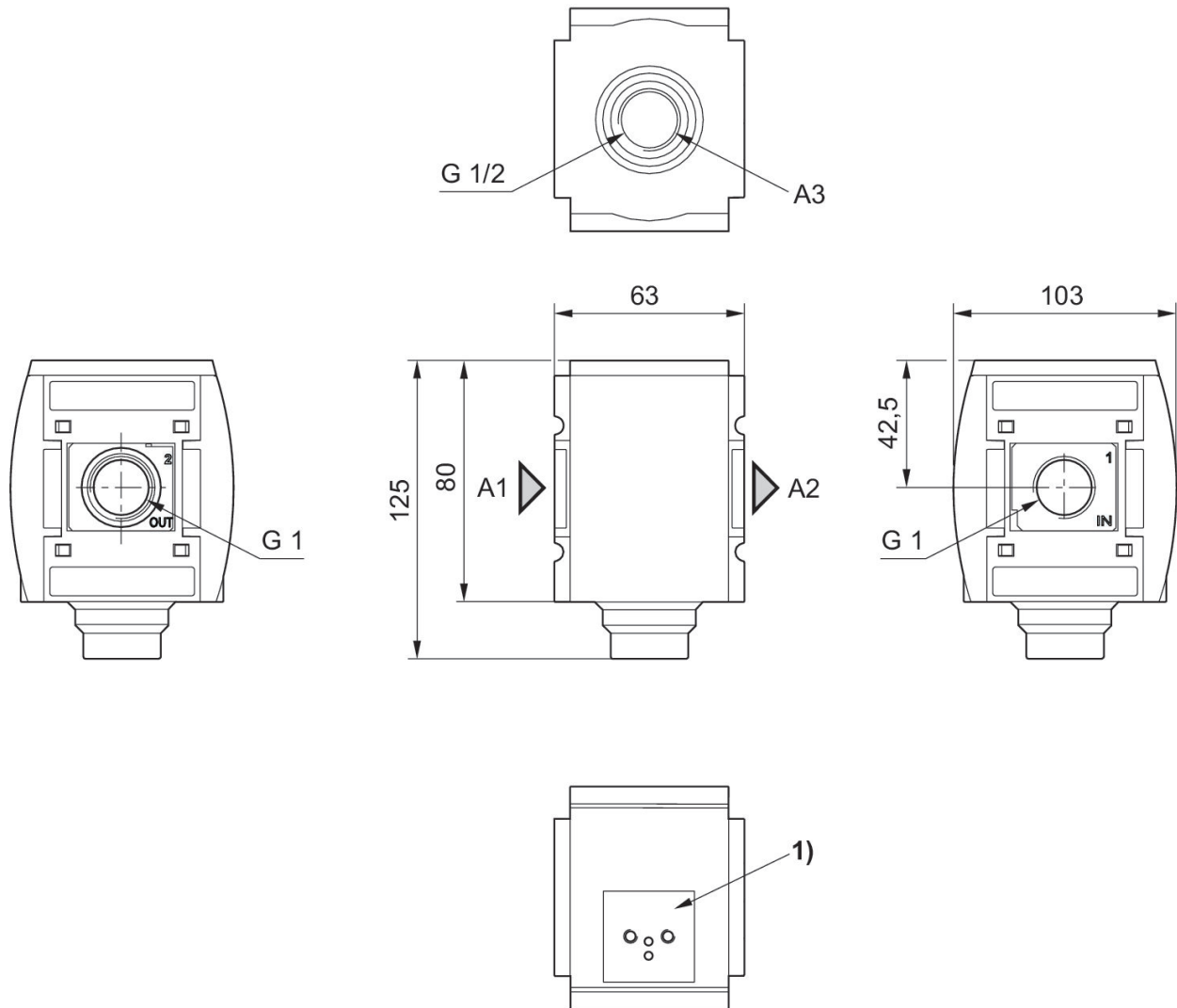
## Technical information

The pressure dew point must be at least 15 °C less than ambient and medium temperature and may not exceed 3 °C.

Nominal flow Qn with secondary pressure  $p_2 = 6$  bar at  $\Delta p = 1$  bar

A change in the flow direction (from air supply on the left to air supply on the right) occurs by rotating installation by 180° about the vertical axis. Please see the operating instructions for further details.

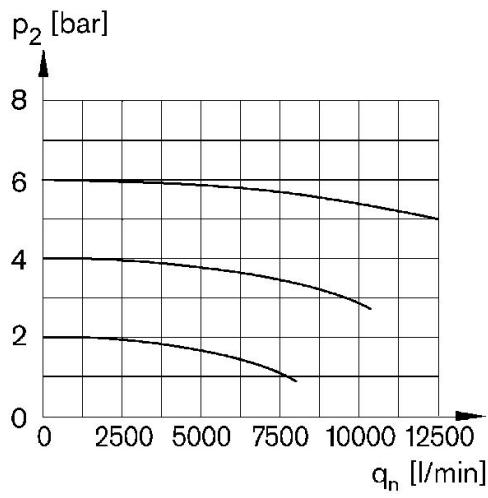
## Dimensions in mm



A1 = input  
A2 = output  
A3 = ventilation port  
1) For pilot valve series DO16

### Flow rate characteristic

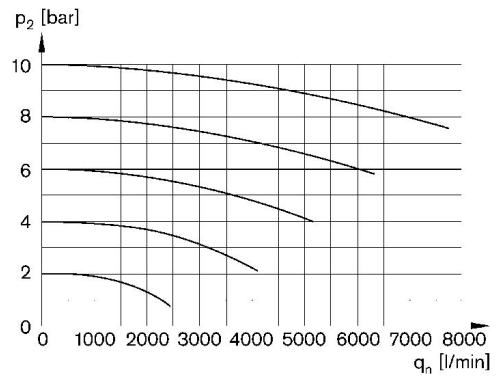
$p_2 = 0,05 - 7 \text{ bar}, 1 > 2$



$p_2$  = Secondary pressure  
 $q_n$  = Nominal flow

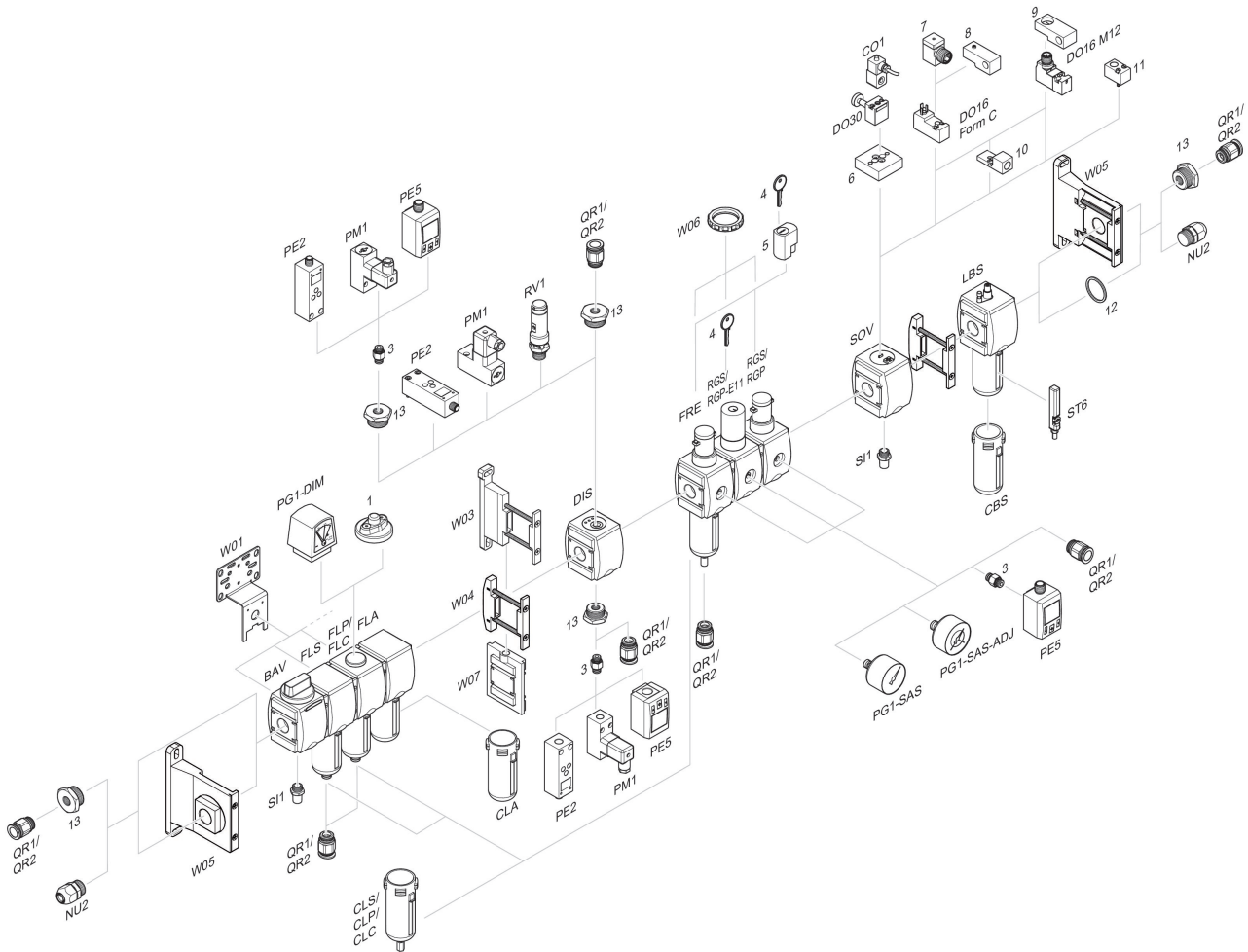
### Rear exhaust

$2 > 3$



$p_2$  = Secondary pressure  
 $q_n$  = Nominal flow

Accessories overview



1 = contamination display 3 = Double nipple 4 = Key for E11 locking 5 = mortise lock 6 = Transition plate DO30 7 = Adapter, Series CON-VP 8 = Mounting aid DO16, form C 9 = Mounting aid DO16, M12 10 = Adapter for external pilot air 11 = Adapter pneumatic operation 12 = Sealing ring 13 = Reducing nipple