

Clevis mounting MP2, Series CM1

1827005914

Clevis
mounting

2024-03-26

AVENTICS Clevis mountings



Technical data

Industry

Industrial

Standardization

CNOMO / NFE 49-001

Piston diameter

63 mm

Material

Material

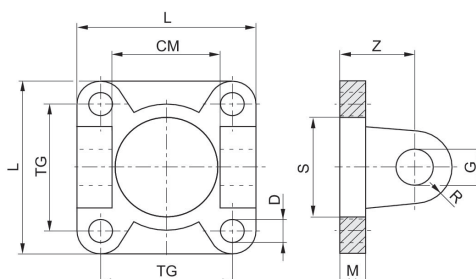
Aluminum

Surface

Cathodic dip-painted

Part No.

1827005914



Clevis mounting MP2, Series CM1

1827005914

Clevis
mounting

2024-03-26

| Piston Ø | Part No. | CM H14 | D H13 | G H9 | M | L | R | S | TG |
|----------|------------|--------|-------|------|----|-----|----|----|-----|
| 25 | 1827005910 | 26 | 7 | 8 | 8 | 40 | 8 | 25 | 28 |
| 32 | 1827005911 | 26 | 7 | 8 | 8 | 45 | 8 | 25 | 33 |
| 40 | 1827005912 | 33 | 7 | 12 | 8 | 52 | 12 | 32 | 40 |
| 50 | 1827005913 | 33 | 9 | 12 | 10 | 65 | 12 | 32 | 49 |
| 63 | 1827005914 | 47 | 9 | 16 | 10 | 75 | 16 | 45 | 59 |
| 80 | 1827005915 | 47 | 11 | 16 | 12 | 95 | 16 | 45 | 75 |
| 100 | 1827005916 | 57 | 11 | 20 | 12 | 115 | 20 | 55 | 90 |
| 125 | 1827005917 | 57 | 14 | 20 | 16 | 140 | 21 | 55 | 110 |
| 160 | 7472ZZ1428 | 72 | 18 | 25 | 20 | 180 | 25 | 65 | 140 |
| 200 | 7472ZZ1429 | 72 | 18 | 25 | 20 | 220 | 25 | 65 | 175 |

| Piston Ø | Z |
|----------|----|
| 25 | 18 |
| 32 | 18 |
| 40 | 24 |
| 50 | 26 |
| 63 | 30 |
| 80 | 32 |
| 100 | 37 |
| 125 | 41 |
| 160 | 55 |
| 200 | 55 |