

# Clevis mounting MP2, Series CM1

1827005915

Clevis  
mounting

2024-03-26

## AVENTICS Clevis mountings



### Technical data

Industry

Industrial

Standardization

CNOMO / NFE 49-001

Piston diameter

80 mm

### Material

Material

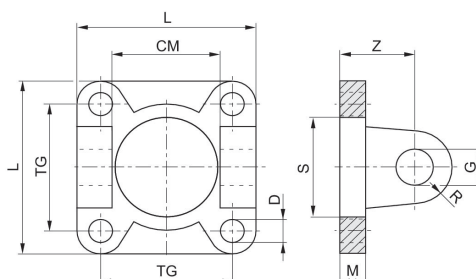
Aluminum

Surface

Cathodic dip-painted

Part No.

1827005915



# Clevis mounting MP2, Series CM1

1827005915

Clevis  
mounting

2024-03-26

| Piston Ø | Part No.   | CM H14 | D H13 | G H9 | M  | L   | R  | S  | TG  |
|----------|------------|--------|-------|------|----|-----|----|----|-----|
| 25       | 1827005910 | 26     | 7     | 8    | 8  | 40  | 8  | 25 | 28  |
| 32       | 1827005911 | 26     | 7     | 8    | 8  | 45  | 8  | 25 | 33  |
| 40       | 1827005912 | 33     | 7     | 12   | 8  | 52  | 12 | 32 | 40  |
| 50       | 1827005913 | 33     | 9     | 12   | 10 | 65  | 12 | 32 | 49  |
| 63       | 1827005914 | 47     | 9     | 16   | 10 | 75  | 16 | 45 | 59  |
| 80       | 1827005915 | 47     | 11    | 16   | 12 | 95  | 16 | 45 | 75  |
| 100      | 1827005916 | 57     | 11    | 20   | 12 | 115 | 20 | 55 | 90  |
| 125      | 1827005917 | 57     | 14    | 20   | 16 | 140 | 21 | 55 | 110 |
| 160      | 7472ZZ1428 | 72     | 18    | 25   | 20 | 180 | 25 | 65 | 140 |
| 200      | 7472ZZ1429 | 72     | 18    | 25   | 20 | 220 | 25 | 65 | 175 |

| Piston Ø | Z  |
|----------|----|
| 25       | 18 |
| 32       | 18 |
| 40       | 24 |
| 50       | 26 |
| 63       | 30 |
| 80       | 32 |
| 100      | 37 |
| 125      | 41 |
| 160      | 55 |
| 200      | 55 |