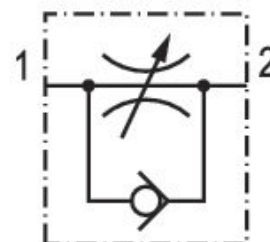


Check-choke valve, stainless steel, Series CC02-SL

R412024751

Series CC02-SL

■ $Q_n = [[50] \text{ l/min}] \dots [[1000] \text{ l/min}]$



Technical data

Industry
Industrial

Port 1
 $\varnothing 6$

Port 2
G 1/4

direction of throttle
 $1 > 2$

Nominal flow Q_n 1 to 2
370 l/min

Compressed air connection type 1
push-in fitting

Compressed air connection type 2
External thread

Throttle
Inlet-Side Throttling

Medium
Compressed air

Working pressure min.
0.5 bar

Working pressure max
10 bar

Min. ambient temperature
 0°C

Max. ambient temperature
 150°C

Min. medium temperature
 0°C

Max. medium temperature
 150°C

Delivery unit
1 piece

Material

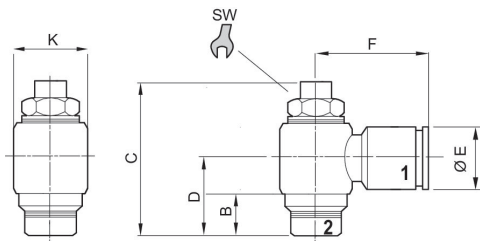
Housing material
 Stainless Steel
 Material flow control screw
 Stainless Steel

Seal material
 Fluorocaoutchouc
 Part No.
 R412024751

Technical information

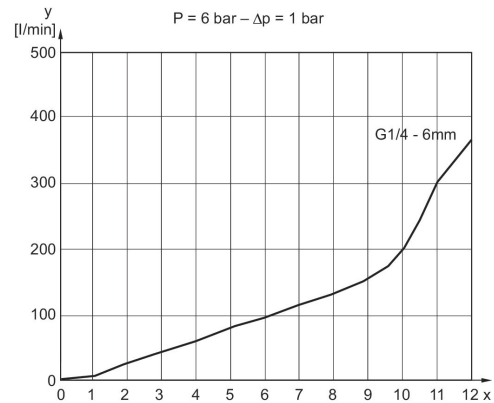
Materials according to AISI/FDA: Housing # Stainless steel AISI 316L (1.4404) Flow control screw # Stainless steel AISI 316L (1.4404) Seal # FKM (FDA-compliant) Stainless steel connection # AISI 316L (1.4404)

Dimensions



Flow diagram

Fig. 5



Flow diagram

Fig. 3

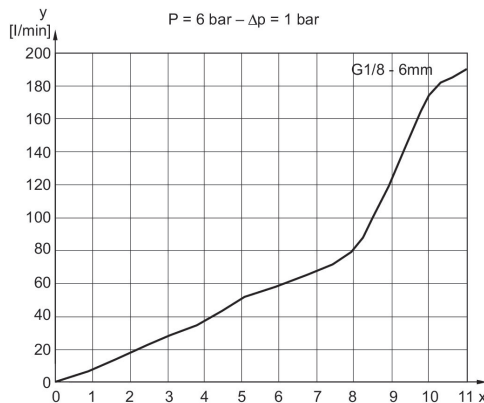
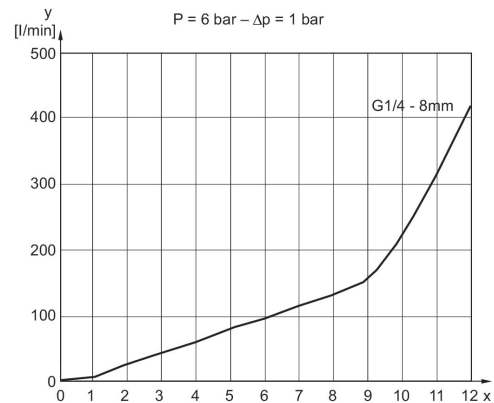
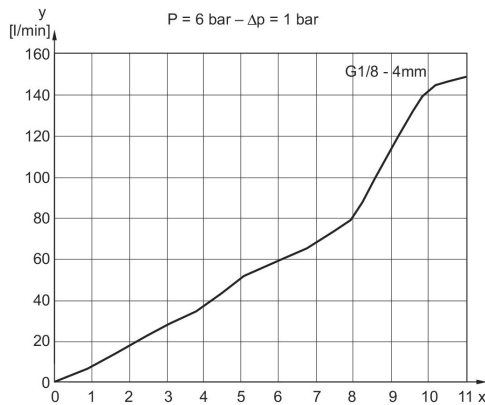


Fig. 4

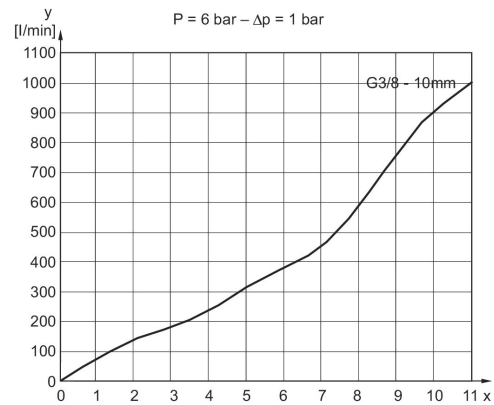
Fig. 4



Flow diagram
 Fig. 1



Flow diagram
 Fig. 5



| Part No. | Port 1 | Port 2 | B | C | D | ØE | F | ØK | SW |
|------------|--------|--------|-----|----|------|----|------|----|----|
| R412024749 | Ø 4 | G 1/8 | 5 | 32 | 15.5 | 9 | 19.5 | 14 | 9 |
| R412024750 | Ø 6 | G 1/8 | 5 | 32 | 15.5 | 12 | 22 | 14 | 9 |
| R412024751 | Ø 6 | G 1/4 | 6.5 | 40 | 17.5 | 12 | 23.5 | 17 | 10 |
| R412024752 | Ø 8 | G 1/4 | 6.5 | 40 | 17.5 | 14 | 24 | 17 | 10 |
| R412024753 | Ø 10 | G 3/4 | 9 | 52 | 22 | 16 | 28 | 22 | 14 |