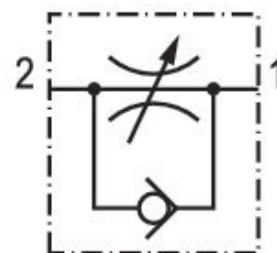


Check-choke valve, stainless steel, Series CC02-SL

R412024740

Series CC02-SL

■ $Q_n = [[50] \text{ l/min}] \dots [[1000] \text{ l/min}]$



Technical data

Industry
Industrial

Port 1
 $\varnothing 6$

Port 2
G 1/4

direction of throttle
 $2 > 1$

Nominal flow Q_n 2 to 1
370 l/min

Compressed air connection type 1
push-in fitting

Compressed air connection type 2
External thread

Note

suitable for use in food processing

Throttle

Exhaust Air Throttling

Certificates

NSF/ANSI 169
FDA conform
EU Regulation 1935/2004

Medium

Compressed air

Working pressure min.
0.5 bar

Working pressure max
10 bar

Min. ambient temperature
0 °C

Max. ambient temperature
150 °C

Min. medium temperature
0 °C

Max. medium temperature
150 °C

Delivery unit
 1 piece

Material

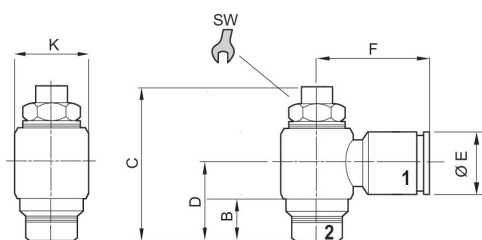
Housing material
 Stainless Steel
 Material flow control screw
 Stainless Steel

Seal material
 Fluorocaoutchouc
 Part No.
 R412024740

Technical information

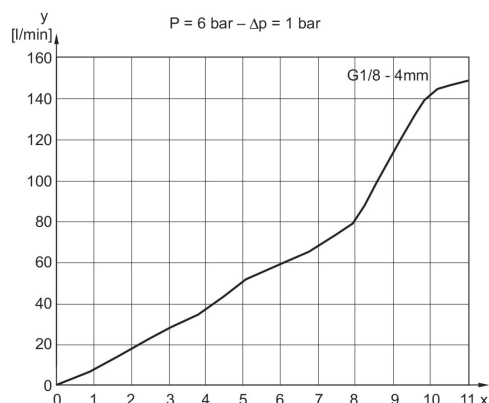
Materials according to AISI/FDA: Housing # Stainless steel AISI 316L (1.4404) Flow control screw # Stainless steel AISI 316L (1.4404) Seal # FKM (FDA-compliant) Stainless steel connection # AISI 316L (1.4404)

Dimensions



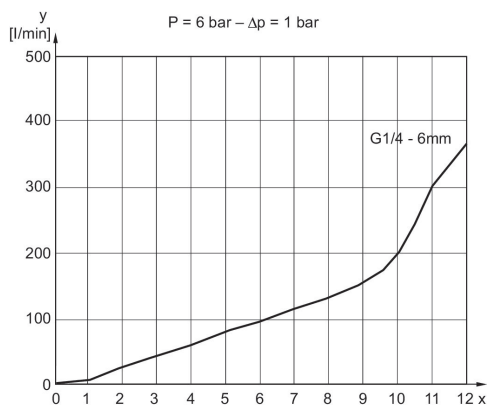
Flow diagram

Fig. 2



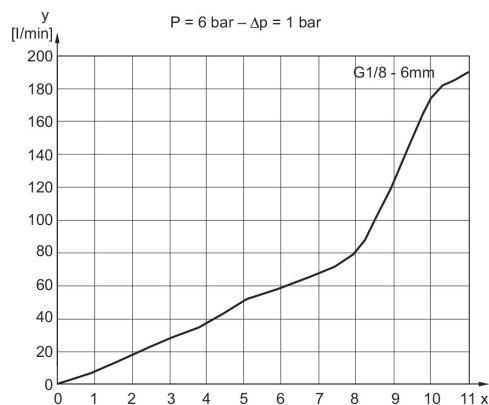
Flow diagram

Fig. 5

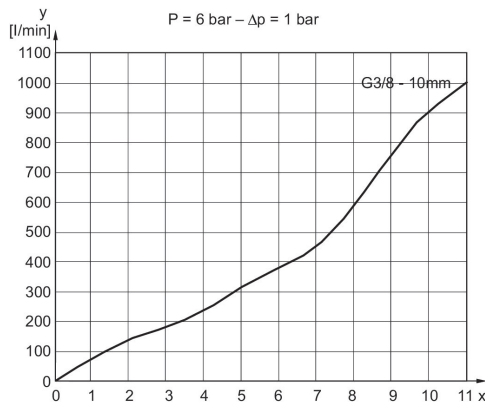


Flow diagram

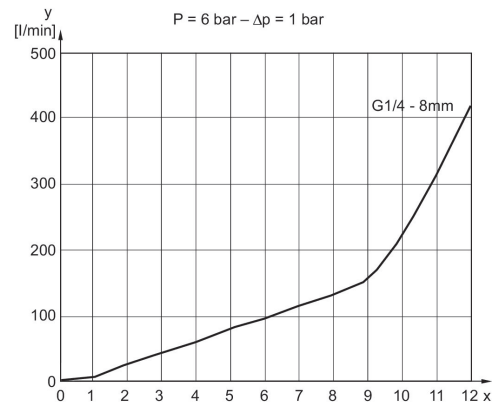
Fig. 3



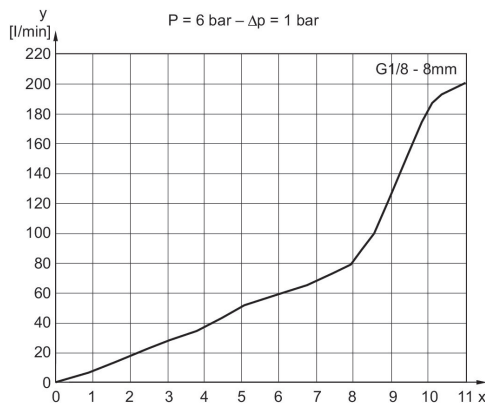
Flow diagram
 Fig. 7



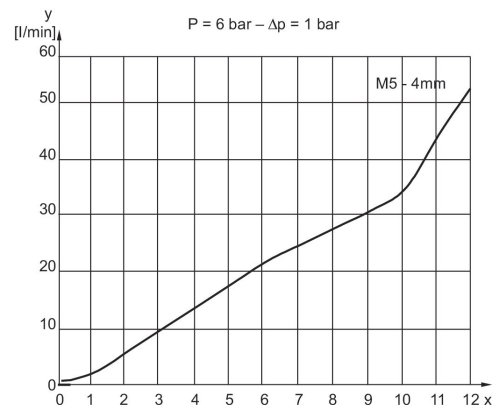
Flow diagram
 Fig. 6



Flow diagram
 Fig. 4



Flow diagram
 Fig. 1



Part No.	Port 1	Port 2	B	C	D	ØE	F	ØK	SW
R412024736	Ø 4		5	28.5	12.5	9	18	10	6
R412024737	Ø 4		5	32	15.5	9	19.5	14	9
R412024738	Ø 6		5	32	15.5	12	22	14	9
R412024739	Ø 8		5	32	15.5	14	22.5	14	9
R412024740	Ø 6		6.5	40	17.5	12	23.5	17	10
R412024741	Ø 8		6.5	40	17.5	14	24	17	10
R412024742	Ø 10		9	52	22	16	28	22	14