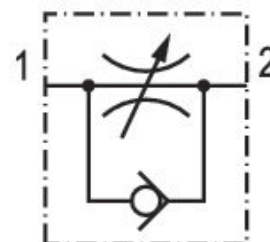


Check-choke valve, stainless steel, Series CC02-SL

R412024749

Series CC02-SL

■ $Q_n = [[50] \text{ l/min}] \dots [[1000] \text{ l/min}]$



Technical data

Industry
Industrial

Port 1
 $\varnothing 4$

Port 2
G 1/8

direction of throttle
 $1 > 2$

Nominal flow Q_n 1 to 2
150 l/min

Compressed air connection type 1
push-in fitting

Compressed air connection type 2
External thread

Throttle
Inlet-Side Throttling

Medium
Compressed air

Working pressure min.
0.5 bar

Working pressure max
10 bar

Min. ambient temperature
0 °C

Max. ambient temperature
150 °C

Min. medium temperature
0 °C

Max. medium temperature
150 °C

Delivery unit
1 piece

Material

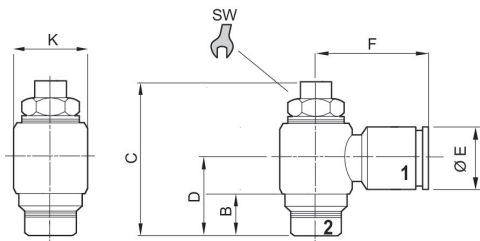
Housing material
 Stainless Steel
 Material flow control screw
 Stainless Steel

Seal material
 Fluorocaoutchouc
 Part No.
 R412024749

Technical information

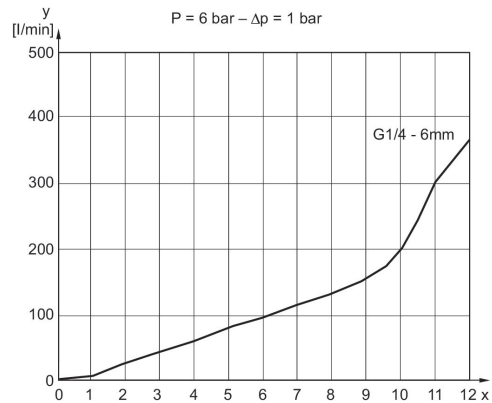
Materials according to AISI/FDA: Housing # Stainless steel AISI 316L (1.4404) Flow control screw # Stainless steel AISI 316L (1.4404) Seal # FKM (FDA-compliant) Stainless steel connection # AISI 316L (1.4404)

Dimensions



Flow diagram

Fig. 5



Flow diagram

Fig. 3

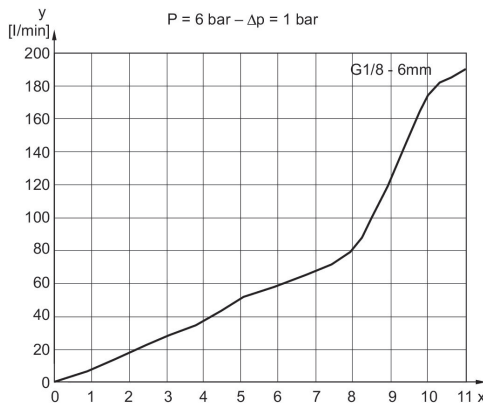
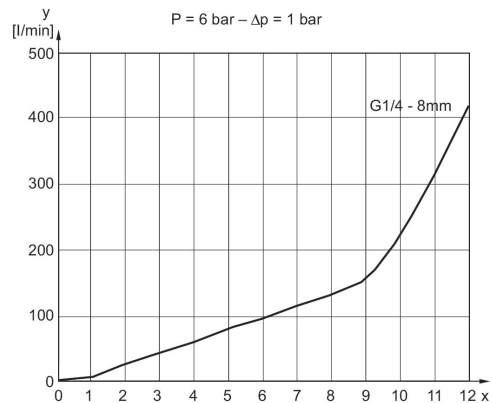
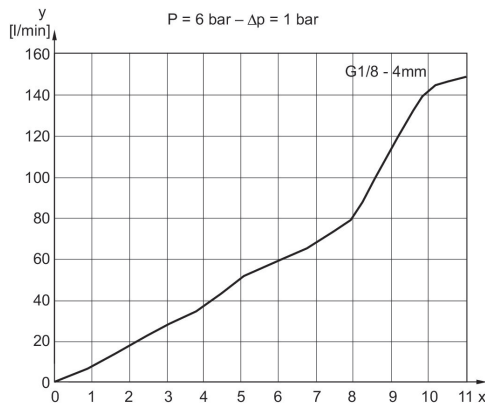


Fig. 4

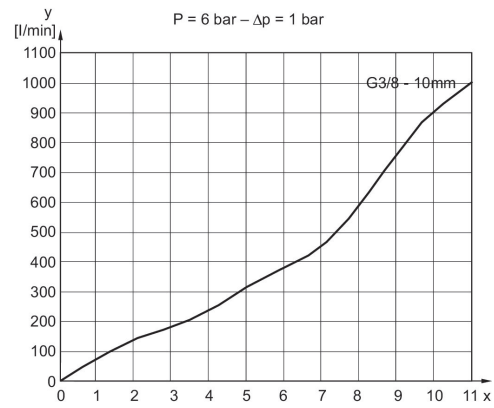
Fig. 4



Flow diagram
 Fig. 1



Flow diagram
 Fig. 5



Part No.	Port 1	Port 2	B	C	D	ØE	F	ØK	SW
R412024749	Ø 4	G 1/8	5	32	15.5	9	19.5	14	9
R412024750	Ø 6	G 1/8	5	32	15.5	12	22	14	9
R412024751	Ø 6	G 1/4	6.5	40	17.5	12	23.5	17	10
R412024752	Ø 8	G 1/4	6.5	40	17.5	14	24	17	10
R412024753	Ø 10	G 3/4	9	52	22	16	28	22	14