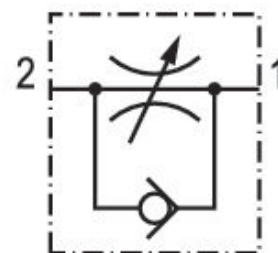


# Check-choke valve, stainless steel, Series CC02-SL

## R412024737

Series CC02-SL

■  $Q_n = [[50] \text{ l/min}] \dots [[1000] \text{ l/min}]$



### Technical data

Industry  
Industrial

Port 1  
 $\varnothing 4$

Port 2  
G 1/8

direction of throttle  
 $2 > 1$

Nominal flow  $Q_n$  2 to 1  
150 l/min

Compressed air connection type 1  
push-in fitting

Compressed air connection type 2  
External thread

#### Note

suitable for use in food processing

#### Throttle

Exhaust Air Throttling

#### Certificates

NSF/ANSI 169  
FDA conform  
EU Regulation 1935/2004

#### Medium

Compressed air

Working pressure min.  
0.5 bar

Working pressure max  
10 bar

Min. ambient temperature  
0 °C

Max. ambient temperature  
150 °C

Min. medium temperature  
0 °C

Max. medium temperature  
150 °C

Delivery unit  
 1 piece

## Material

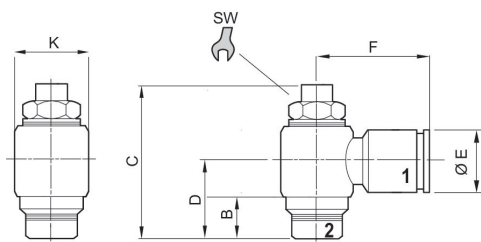
Housing material  
 Stainless Steel  
 Material flow control screw  
 Stainless Steel

Seal material  
 Fluorocaoutchouc  
 Part No.  
 R412024737

## Technical information

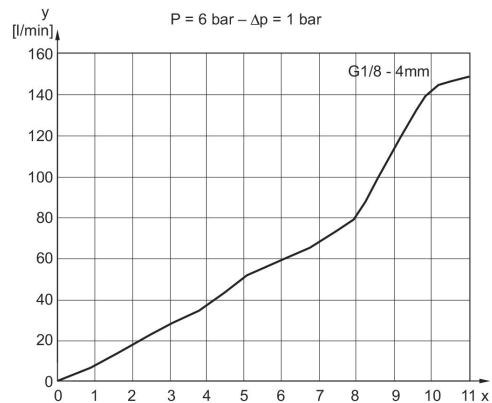
Materials according to AISI/FDA: Housing # Stainless steel AISI 316L (1.4404) Flow control screw # Stainless steel AISI 316L (1.4404) Seal # FKM (FDA-compliant) Stainless steel connection # AISI 316L (1.4404)

## Dimensions



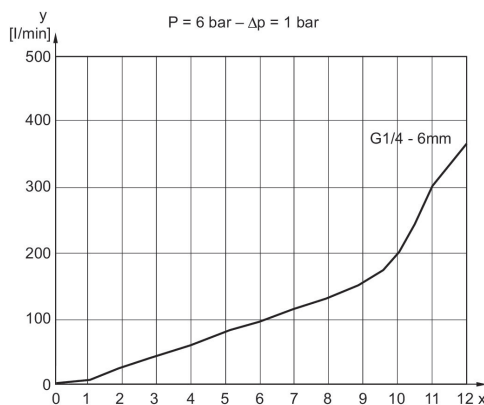
## Flow diagram

Fig. 2



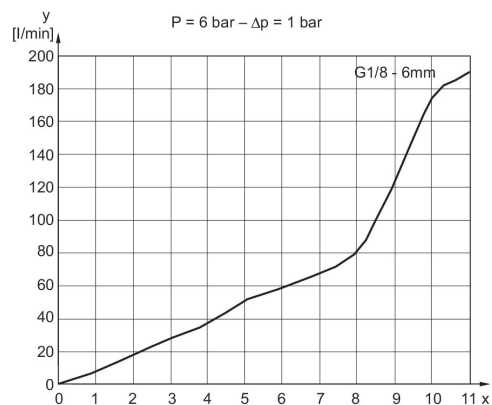
## Flow diagram

Fig. 5

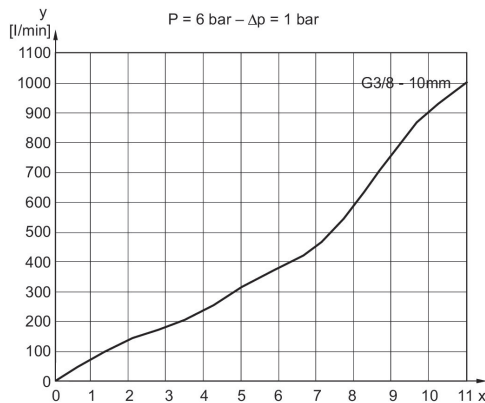


## Flow diagram

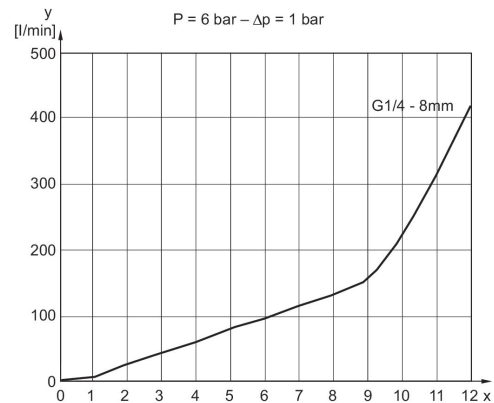
Fig. 3



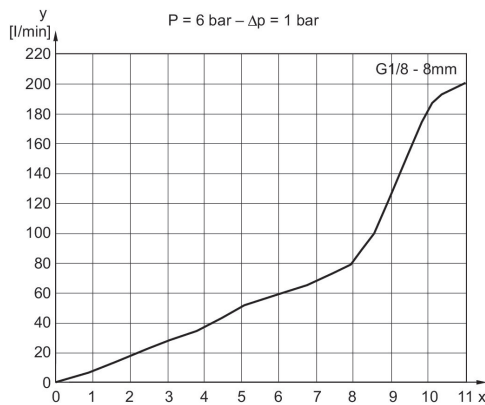
Flow diagram  
Fig. 7



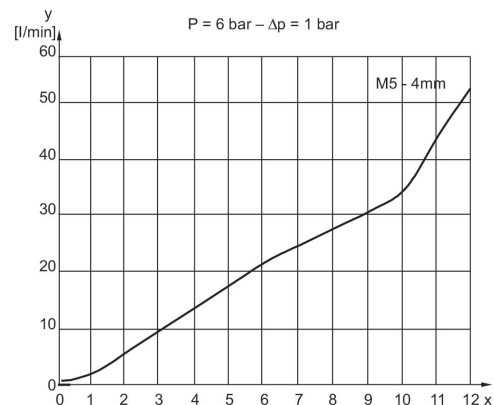
Flow diagram  
Fig. 6



Flow diagram  
Fig. 4



Flow diagram  
Fig. 1



Part No.	Port 1	Port 2	B	C	D	ØE	F	ØK	SW
R412024736	Ø 4		5	28.5	12.5	9	18	10	6
R412024737	Ø 4		5	32	15.5	9	19.5	14	9
R412024738	Ø 6		5	32	15.5	12	22	14	9
R412024739	Ø 8		5	32	15.5	14	22.5	14	9
R412024740	Ø 6		6.5	40	17.5	12	23.5	17	10
R412024741	Ø 8		6.5	40	17.5	14	24	17	10
R412024742	Ø 10		9	52	22	16	28	22	14