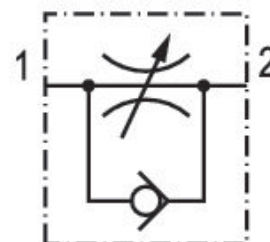


# Check-choke valve, stainless steel, Series CC02-SL

## R412024753

Series CC02-SL

■  $Q_n = [[50] \text{ l/min}] \dots [[1000] \text{ l/min}]$



### Technical data

Industry  
Industrial

Port 1  
 $\varnothing 10$

Port 2  
G 3/8

direction of throttle  
1 > 2

Nominal flow  $Q_n$  1 to 2  
1000 l/min

Compressed air connection type 1  
push-in fitting

Compressed air connection type 2  
External thread

Throttle  
Inlet-Side Throttling

Medium  
Compressed air

Working pressure min.  
0.5 bar

Working pressure max  
10 bar

Min. ambient temperature  
0 °C

Max. ambient temperature  
150 °C

Min. medium temperature  
0 °C

Max. medium temperature  
150 °C

Delivery unit  
1 piece

### Material

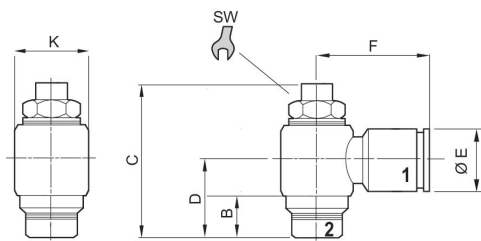
Housing material  
 Stainless Steel  
 Material flow control screw  
 Stainless Steel

Seal material  
 Fluorocaoutchouc  
 Part No.  
 R412024753

### Technical information

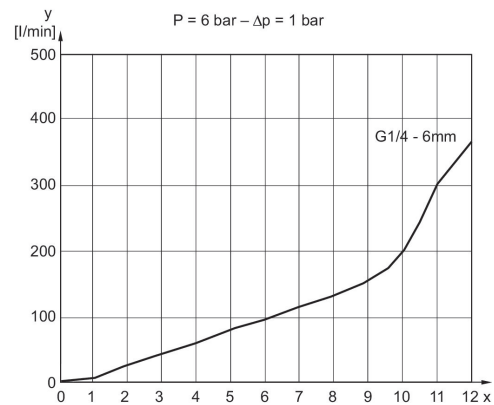
Materials according to AISI/FDA: Housing # Stainless steel AISI 316L (1.4404) Flow control screw # Stainless steel AISI 316L (1.4404) Seal # FKM (FDA-compliant) Stainless steel connection # AISI 316L (1.4404)

### Dimensions



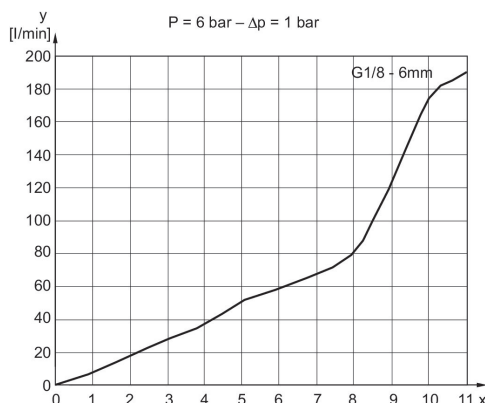
### Flow diagram

Fig. 5



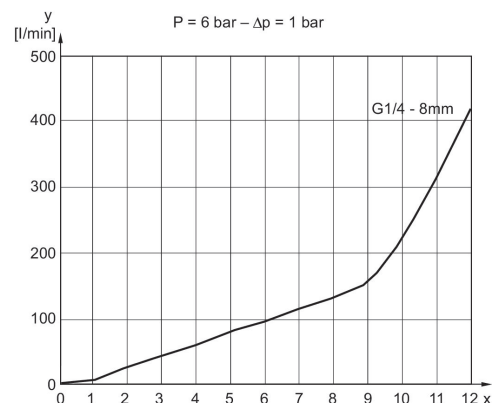
### Flow diagram

Fig. 3

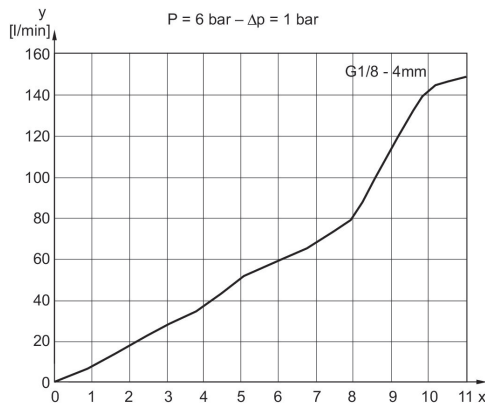


### Fig. 4

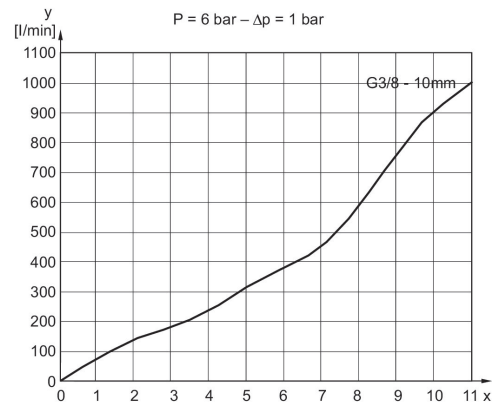
Fig. 4



Flow diagram  
 Fig. 1



Flow diagram  
 Fig. 5



Part No.	Port 1	Port 2	B	C	D	ØE	F	ØK	SW
R412024749	Ø 4	G 1/8	5	32	15.5	9	19.5	14	9
R412024750	Ø 6	G 1/8	5	32	15.5	12	22	14	9
R412024751	Ø 6	G 1/4	6.5	40	17.5	12	23.5	17	10
R412024752	Ø 8	G 1/4	6.5	40	17.5	14	24	17	10
R412024753	Ø 10	G 3/4	9	52	22	16	28	22	14