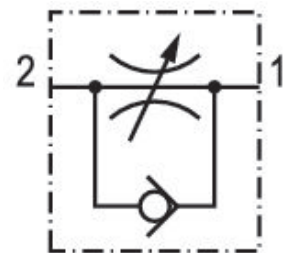


Check-choke valve, Series CC04

R412010565

Series CC04

- $Q_n = [[70] \text{ l/min}] \dots [[1950] \text{ l/min}]$



Technical data

Industry
Industrial

Port 1
 $\varnothing 6$

Port 2
M5

Throttle bore \varnothing
2 mm

direction of throttle
 $2 > 1$

Nominal flow Q_n 2 to 1
110 l/min

Compressed air connection type 1
push-in fitting

Compressed air connection type 2
External thread

Throttle
Exhaust Air Throttling

Medium
Compressed air

Working pressure min.
0.5 bar

Working pressure max
10 bar

Min. ambient temperature
 $-10\text{ }^\circ\text{C}$

Max. ambient temperature
 $60\text{ }^\circ\text{C}$

Min. medium temperature
 $-10\text{ }^\circ\text{C}$

Max. medium temperature
 $60\text{ }^\circ\text{C}$

Material

Housing material

Polyamide

Seal material

Acrylonitrile butadiene rubber

Material compressed air connection

Brass

Part No.

R412010565

Technical information

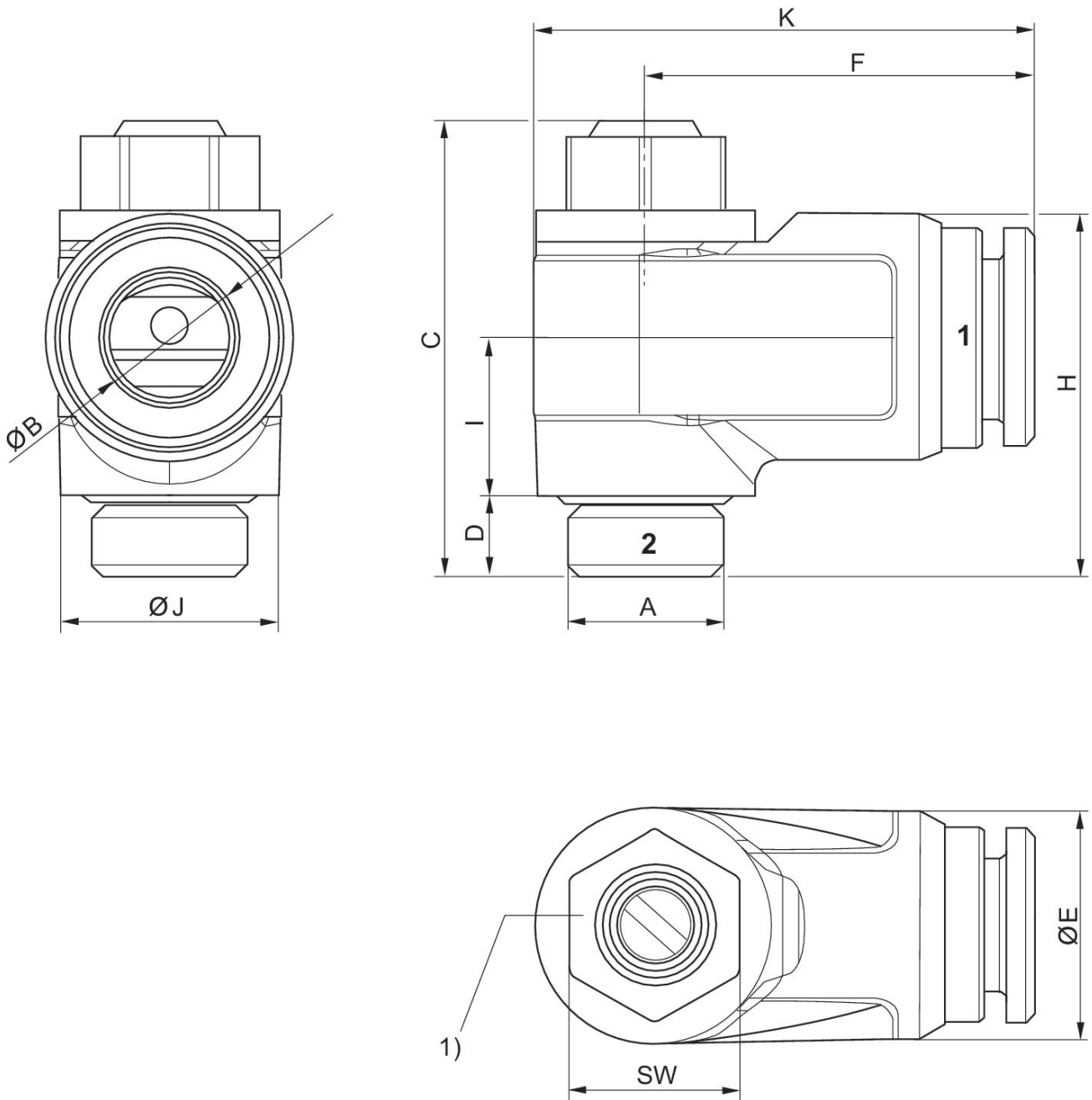
The min. control pressure must be adhered to, since otherwise faulty switching and valve failure may result!

The pressure dew point must be at least 15 °C under ambient and medium temperature and may not exceed 3 °C .

The oil content of compressed air must remain constant during the life cycle.

Use only the approved oils from AVENTICS. Further information can be found in the “Technical information” document (available in <https://www.emerson.com/en-us/support>).

Dimensions



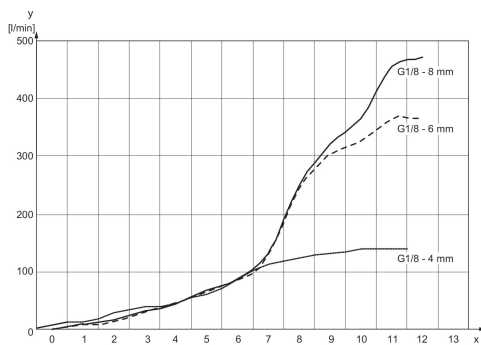
1) Recommended tightening torque M_A : M 5: 1.1 Nm -0.2 G 1/8: 3.0 Nm -0.3 G 1/4: 6.0 Nm -0.6 G 3/8: 8.0 Nm -1.0 G 1/2: 10.0 Nm -1.0

Part No.	Port 1	Port 2	$\varnothing B$	C	D	$\varnothing E$	F	K	H
R412010564	$\varnothing 4$	M5	4	21.8	4	9	15.9	20.4	12
R412010565	$\varnothing 4$	G 1/8	6	21.8	4	11.1	17.2	21.8	13
R412010568	$\varnothing 6$	M5	4	28.5	5.5	11.5	21.9	28.8	21
R412010569	$\varnothing 6$	G 1/8	6	28.5	5.5	13.5	22.4	29.3	21.7
R412010570	$\varnothing 6$	G 1/4	8	28.5	5.5	15.5	24.2	31.1	22.7

Part No.	Port 1	Port 2	Ø B	C	D	Ø E	F	K	H
R412010571	Ø 8	G 1/8	6	33.6	6.5	13	24.3	33.5	25.3
R412010572	Ø 8	G 1/4	8	33.6	6.5	15.5	26.6	35.5	25.3
R412010573	Ø 8	G 1/4	10	33.6	6.5	18.1	29.2	38.1	26.7
R412010574	Ø 10	G 3/8	8	40.8	7	15.6	28.2	40.6	23.6
R412010575	Ø 10	G 3/8	10	40.8	7	19	32	43.3	33.5
R412010576	Ø 10	G 3/8	12	40.8	7	22.1	34.2	45.4	35.6
R412010577	Ø 12	G 1/2	10	47.8	8.3	19.2	34	47.7	41.1
R412010578	Ø 12	G 1/2	12	47.8	8.3	22	36.1	49.8	43.9

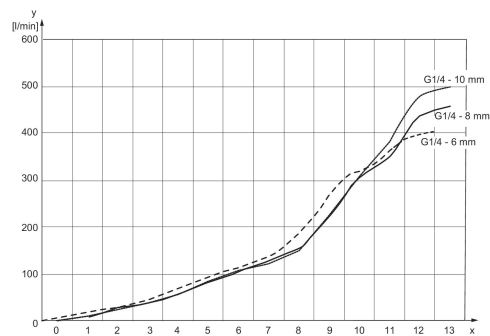
Part No.	l	Ø J	SW
R412010564	7.5	8.7	7
R412010565	7.5	8.7	7
R412010568	9.8	13.6	10
R412010569	9.8	13.6	10
R412010570	9.8	13.6	10
R412010571	12.8	17.6	13
R412010572	11.5	17.6	13
R412010573	11.5	17.6	13
R412010574	15.8	22.2	16
R412010575	16.4	22.2	16
R412010576	17.8	22.2	16
R412010577	20.3	26.6	18
R412010578	21.5	26.6	18

Flow diagram
Fig. 2



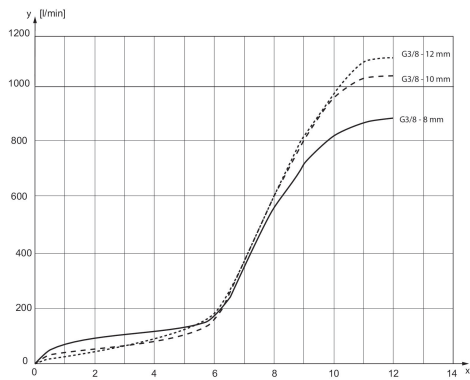
x = rotations of the throttle screw y = flow rate Qn

Flow diagram
Fig. 3



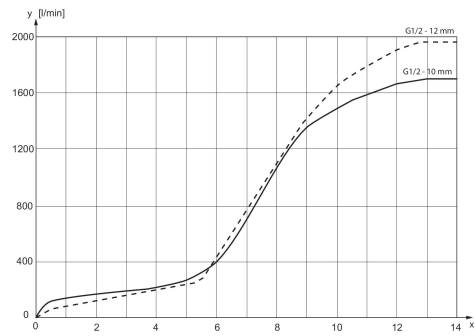
x = rotations of the throttle screw y = flow rate Qn

Flow diagram
Fig. 4



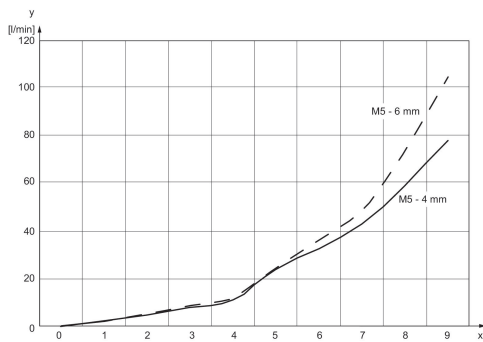
x = rotations of the throttle screw y = flow rate Qn

Flow diagram
Fig. 5



x = rotations of the throttle screw y = flow rate Qn

Flow diagram
Fig. 1



x = rotations of the throttle screw y = flow rate Qn