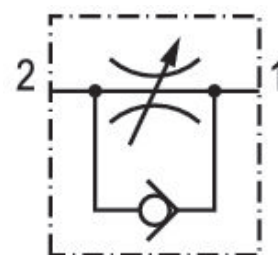


Check-choke valve, Series CC04

2540106070

Series CC04

- $Q_n = [[70] \text{ l/min}] \dots [[1950] \text{ l/min}]$



Technical data

Industry
Industrial

Port 1
 $\varnothing 6$

Port 2
M7

Throttle bore \varnothing
1.5 mm

direction of throttle
 $2 > 1$

Nominal flow Q_n 2 to 1
85 l/min

Compressed air connection type 1
push-in fitting

Compressed air connection type 2
External thread

Throttle
Exhaust Air Throttling

Medium
Compressed air

Working pressure min.
0.5 bar

Working pressure max
10 bar

Min. ambient temperature
 $-10\text{ }^{\circ}\text{C}$

Max. ambient temperature
 $70\text{ }^{\circ}\text{C}$

Min. medium temperature
 $-10\text{ }^{\circ}\text{C}$

Max. medium temperature
 $70\text{ }^{\circ}\text{C}$

Material

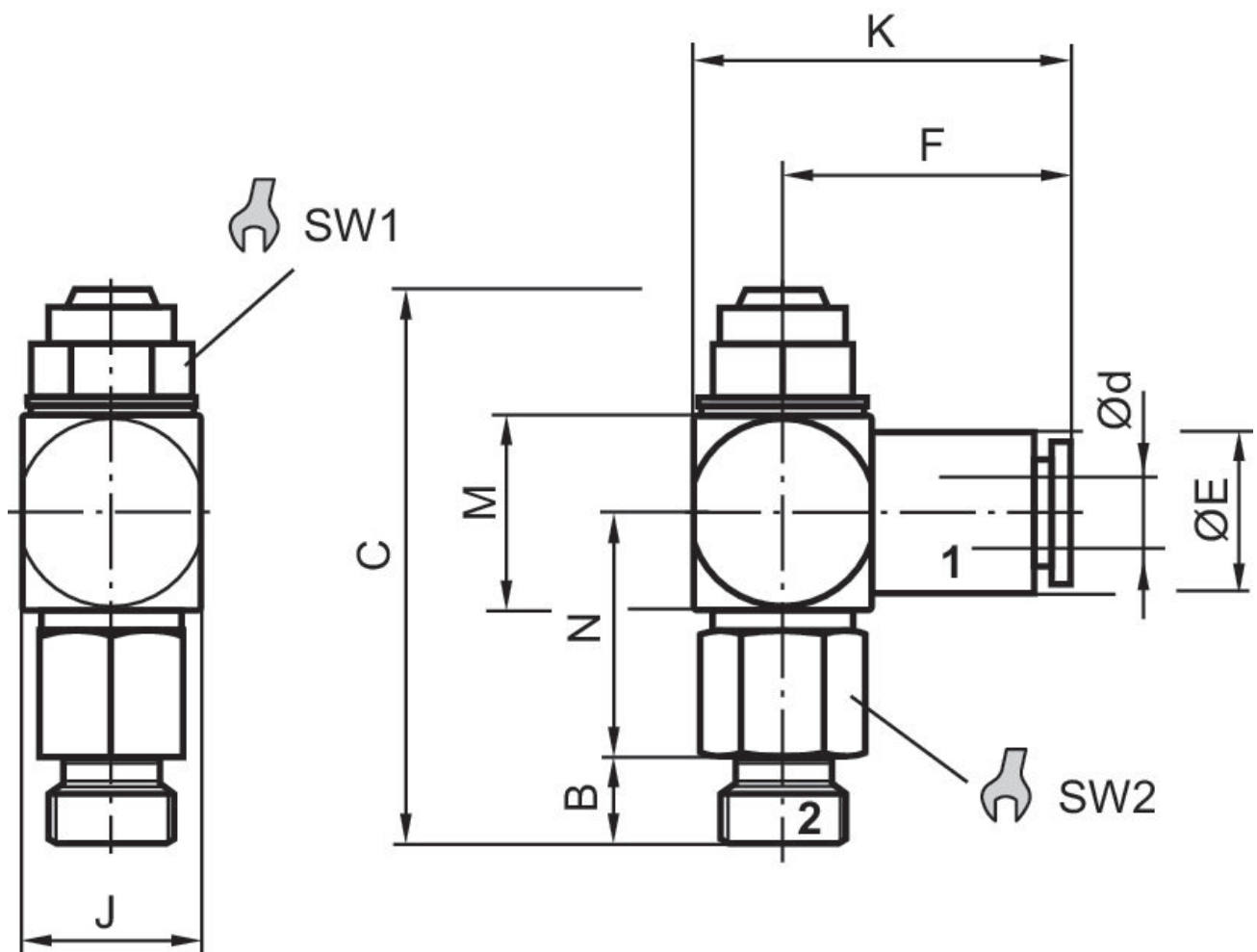
Housing material
Polyamide
Material flow control screw
Brass

Seal material
Acrylonitrile butadiene rubber
Part No.
2540106070

Technical information

Tightening torque: 1,1 Nm -0,3

Dimensions



Part No.	Port 1	Port 2	B	C	Ød	ØE	F	J	K
2540104070	Ø 4	M7	5	31	4	9	16	11	21

Part No.	Port 1	Port 2	B	C	Ød	ØE	F	J	K
2540106070	Ø 6	M7	5	31	6	11	16.5	11	21.5

Part No.	M	N	SW1	SW2
2540104070	11	13.5	8	10
2540106070	11	13.5	8	10