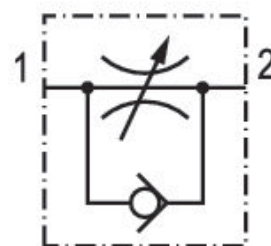


Check-choke valve, Series CC04

0821200149

Series CC04

■ $Q_n = [[70] \text{ l/min}] \dots [[1950] \text{ l/min}]$



Technical data

Industry
Industrial

Port 1
 $\varnothing 4$

Port 2
M5

Throttle bore \varnothing
1.5 mm

direction of throttle
 $1 > 2$

Nominal flow Q_n 1 to 2
85 l/min

Compressed air connection type 1
push-in fitting

Compressed air connection type 2
External thread

Throttle
Inlet-Side Throttling

Medium
Compressed air

Working pressure min.
0.5 bar

Working pressure max
10 bar

Min. ambient temperature
 $-10\text{ }^{\circ}\text{C}$

Max. ambient temperature
 $70\text{ }^{\circ}\text{C}$

Min. medium temperature
 $-10\text{ }^{\circ}\text{C}$

Max. medium temperature
 $70\text{ }^{\circ}\text{C}$

Material

Housing material
Polyamide

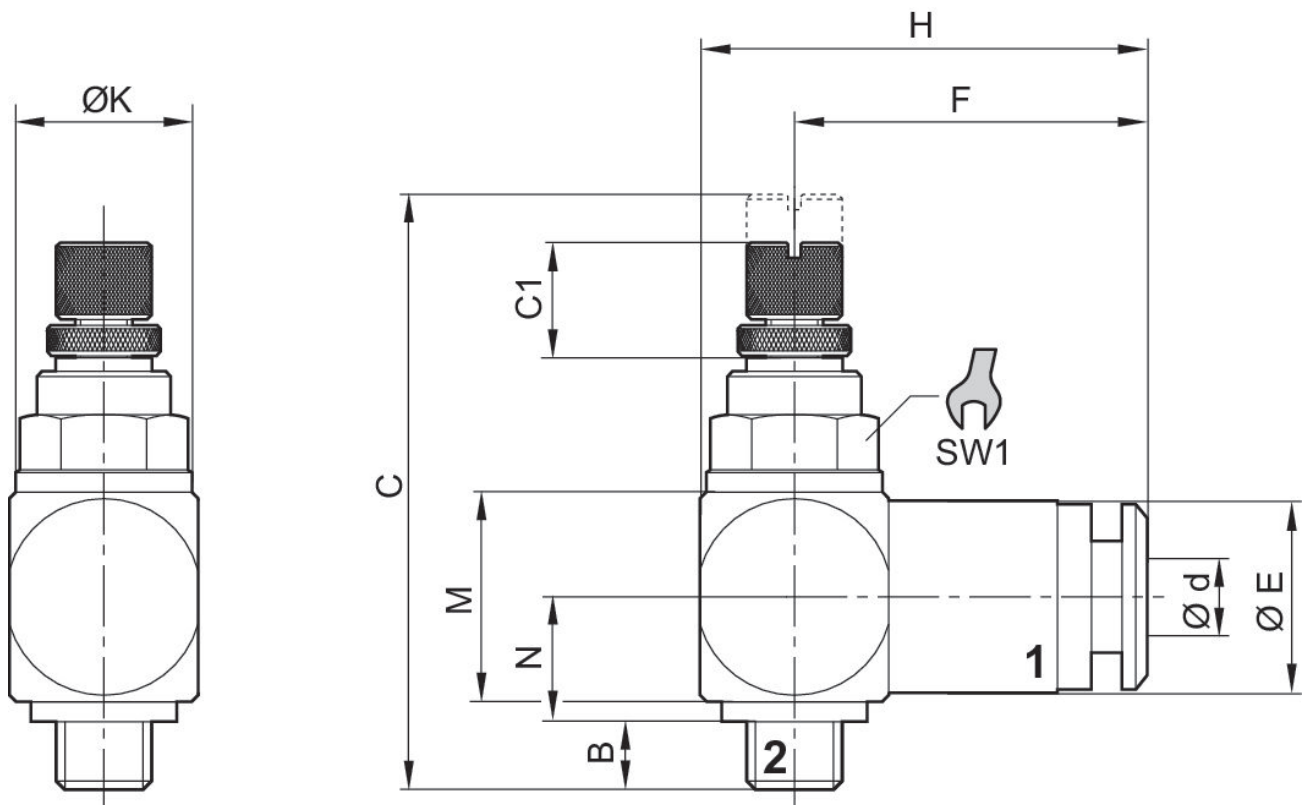
Material flow control screw
Brass

Seal material
Acrylonitrile butadiene rubber

Part No.
0821200149

Technical information

Dimensions



Throttle setting via knurled bolt

Part No.	Port 1	Port 2	B	C	C1	Ød	ØE	F	H
0821200149	Ø 4	M5	3.5	30.5	6	4	10	19	24
0821200234	Ø 6	M5	3.5	30.5	6	6	12	20	25

Part No.	K	M	N	SW1
0821200149	10	11	6.5	8
0821200234	10	11	6.5	8