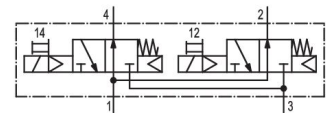
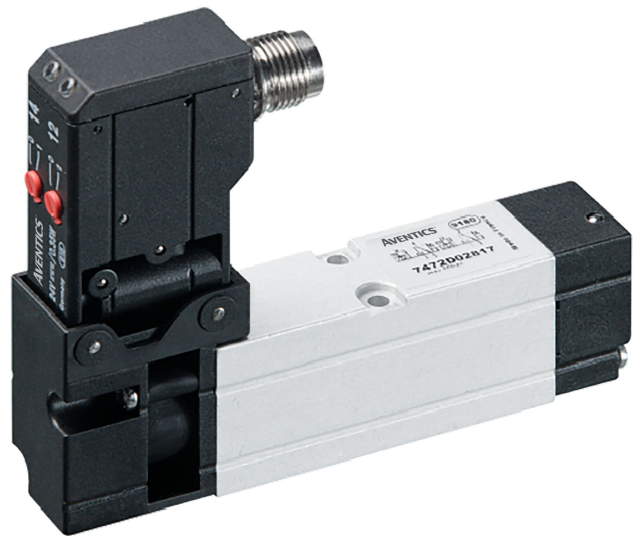


7472D02818

AVENTICS Series CD02-AL Standardized valve systems (ISO 15407-1)

The AVENTICS Series CD02-AL complies with ISO 15407-1. The piloted controlled valves with a flow rate of up to 650 l/min consist of a robust aluminium body and are available with an individual connection plate as well as a valve system.



Technical data

Industry	Industrial
Activation	Electrically
Nominal flow Q _n	450 l/min
Version	NO/NO
Compressed air connection output	VDMA 02 base plate
Min. working pressure	2.5 bar
Max. working pressure	10 bar
Operational voltage	24 V DC
Operational voltage DC	24 V
Voltage tolerance DC	-15% / +20%
Manual override	without detent
Electrical connection type	Plug
Electrical connection size	M12
Electrical connection number of poles	3-pin
Sealing principle	Soft seal
Pilot	Internal
Standards	ISO 15407-1
Pilot valve width	15 mm
Valve type	Spool valve, positive overlapping

7472D02818

Blocking principle	Base plate principle, multiple
Connection type	Plate connection
Compressed air connection input	VDMA 02 base plate
Compressed air connection, exhaust	VDMA 02 base plate
Compressed air connection pilot exhaust	VDMA 02 base plate
Power consumption DC	0.35 W
Frame size	18 mm
Min. control pressure	2.5 bar
Max. control pressure	10 bar
Min. ambient temperature	0 °C
Max. ambient temperature	50 °C
Min. medium temperature	0 °C
Max. medium temperature	50 °C
Medium	Compressed air
Max. particle size	5 µm
Min. oil content of compressed air	0 mg/m ³
Max. oil content of compressed air	5 mg/m ³
Connector standard	EN 61076-2-101
Protection class with connection	IP65
Protective circuit	TVS diode
LED status display	Yellow
Duty cycle	100 %
Typ. switch-on time	12 ms
Typ. switch-off time	20 ms
Mounting screws	M3
Weight	0.12 kg
Housing material	Aluminum
Seal material	Acrylonitrile butadiene rubber Hydrogenated acrylonitrile butadiene rubber
Material front plate	Polyamide
Part No.	7472D02818

Technical information

The min. control pressure must be adhered to, since otherwise faulty switching and valve failure may result!

The pressure dew point must be at least 15 °C less than ambient and medium temperature and may not exceed 3 °C.

The oil content of compressed air must remain constant during the life cycle.

Use only the approved oils from AVENTICS. Further information can be found in the "Technical information" document (available in <https://www.emerson.com/en-us/support>).

2 x 3/2-directional valve, Series CD02-AL

2023-12-13

7472D02818

Dimensions

