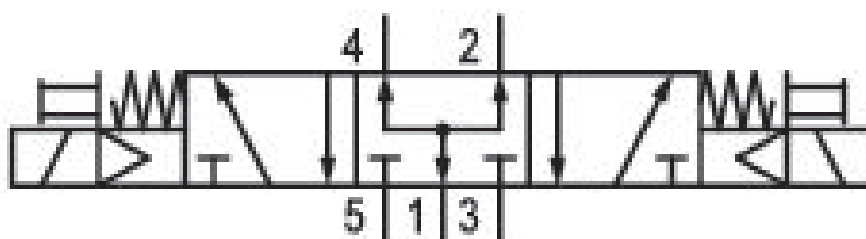


5/3-directional valve, Series CD02-AL

0820039264

Series CD02-AL

- Qn max. [[450] l/min]
- Electr. control: M12x1, form C
- Width: [[18] mm]
- Pneumatic control



Technical data

Industry
Industrial

Activation
Electrically

Nominal flow Qn
250 l/min

Switching principle
5/3

Version
Pressurized Center

Compressed air connection output
VDMA 02 base plate

Working pressure min.
2.2 bar

Working pressure max
10 bar

Operational voltage AC at 50 Hz
110 V

Operational voltage AC at 60 Hz
110 V

Voltage tolerance AC 50 Hz
-10% / +10%

Voltage tolerance AC 60 Hz
-10% / +10%

Manual override
without detent

Electrical connection
2

Electrical connection type Plug	Min. ambient temperature 0 °C
Electrical connection size ISO 15217, form C	Max. ambient temperature 50 °C
Sealing principle Soft Seal	Min. medium temperature 0 °C
Pilot Internal	Max. medium temperature 60 °C
Standards ISO 15407-1	Medium Compressed air
Pilot valve width 15 mm	Max. particle size 5 µm
Valve type Spool valve, positive overlapping	Oil content of compressed air min. 0 mg/m ³
Blocking principle Base plate principle, multiple	Oil content of compressed air max. 5 mg/m ³
Connection type Plate connection	Connector standard ISO 15217
Compressed air connection input VDMA 02 base plate	Protection class with connection IP65
Compressed air connection, exhaust VDMA 02 base plate	Duty cycle 100 %
Compressed air connection pilot exhaust VDMA 02 base plate	Typ. switch-on time 9 ms
Holding power AC 50 Hz 1.6 VA	Typ. switch-off time 20 ms
Holding power AC 60 Hz 1.4 VA	mounting screws M3
Switch-on power AC 50 Hz 2.2 VA	Weight 0.17 kg
Switch-on power AC 60 Hz 2 VA	Housing material Aluminum
Frame size 18 mm	Seal material Acrylonitrile butadiene rubber Hydrogenated acrylonitrile butadiene rubber
Control pressure min. 2.2 bar	Material front plate Polyamide
Control pressure max. 10 bar	Part No. 0820039264

Technical information

The min. control pressure must be adhered to, since otherwise faulty switching and valve failure may result!

The pressure dew point must be at least 15 °C under ambient and medium temperature and may not exceed 3 °C .

The oil content of compressed air must remain constant during the life cycle.

Use only the approved oils from AVENTICS. Further information can be found in the “Technical information” document (available in <https://www.emerson.com/en-us/support>).

Dimensions

