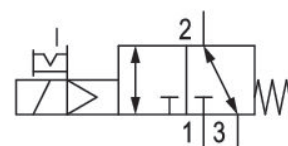


3/2-directional valve, Series CD04

5772555280

General series information
AVENTICS Series CD04 Directional valves

- The AVENTICS Series CD consists of various spool valves with an extremely durable die-cast zinc housing. Its electrical, pneumatic, or mechanical actuating controls (roller, lever, pedal, or plunger) make the Series CD ideal for applications in harsh environments.
- For demanding environments



Technical data

Industry

Activation

Valve type

Switching principle

Valve function

Actuating control

Sealing principle

Connection type

Manual override

Industrial

Electrically

Spool valve, positive overlapping

3/2, with spring return

NC

NO

Single Solenoid

soft seal

Pipe connection

with detent

Standard compressed air connection

Compressed air connection input

Compressed air connection output

Compressed air connection, exhaust

according to ISO 228-1

G 1/8

G 1/8

G 1/8

| | |
|---|------------------------------------|
| Pilot control exhaust | with directional pilot air exhaust |
| Compressed air connection pilot exhaust | M5 |
| Nominal flow Qn | 900 l/min |
| Nominal flow Qn 1 to 2 | 900 l/min |
| Nominal flow Qn 2 to 3 | 900 l/min |
| Working pressure min. | 3 bar |
| Working pressure max. | 10 bar |
| Control pressure min. | 3 bar |
| Control pressure max. | 10 bar |
| Electrical connection type | Plug |
| Electrical connection size | EN 175301-803, form B |
| Electrical connection number of poles | 3-pin |
| Connector standard | EN 175301-803:2006 |
| Protection class with connection | IP65 |
| Operational voltage | 230 V AC |
| Operational voltage AC at 50 Hz | 230 V |
| Voltage tolerance AC 50 Hz | -20% / +10% |
| Operational voltage AC at 60 Hz | 230 V |
| Voltage tolerance AC 60 Hz | -10% / +20% |
| Pilot | Internal |
| Coil width | 22 mm |
| Pilot valve width | 26 mm |
| Compatibility index | 14 |
| Holding power AC 50 Hz | 7.9 VA |
| Holding power AC 60 Hz | 6.4 VA |
| Switch-on power AC 50 Hz | 10.6 VA |
| Switch-on power AC 60 Hz | 8.9 VA |
| Duty cycle | 100 % |
| Typ. switch-on time | 13 ms |
| Typ. switch-off time | 27 ms |
| Min. ambient temperature | -15 °C |
| Max. ambient temperature | 50 °C |
| Min. medium temperature | -15 °C |
| Max. medium temperature | 50 °C |

| | |
|------------------------------------|---------------------|
| Medium | Compressed air |
| Oil content of compressed air min. | 0 mg/m ³ |
| Oil content of compressed air max. | 1 mg/m ³ |
| Max. particle size | 50 µm |
| Weight | 0.3 kg |

Material

| | |
|------------------|---|
| Housing material | Die cast zinc Polyamide fiber-glass reinforced |
| Seal material | Acrylonitrile butadiene rubber |
| Part No. | 5772555280 |

Technical information

option valve: The input and output compressed air connections can be exchanged. The valve can thereby be used in the NC or NO operating mode.

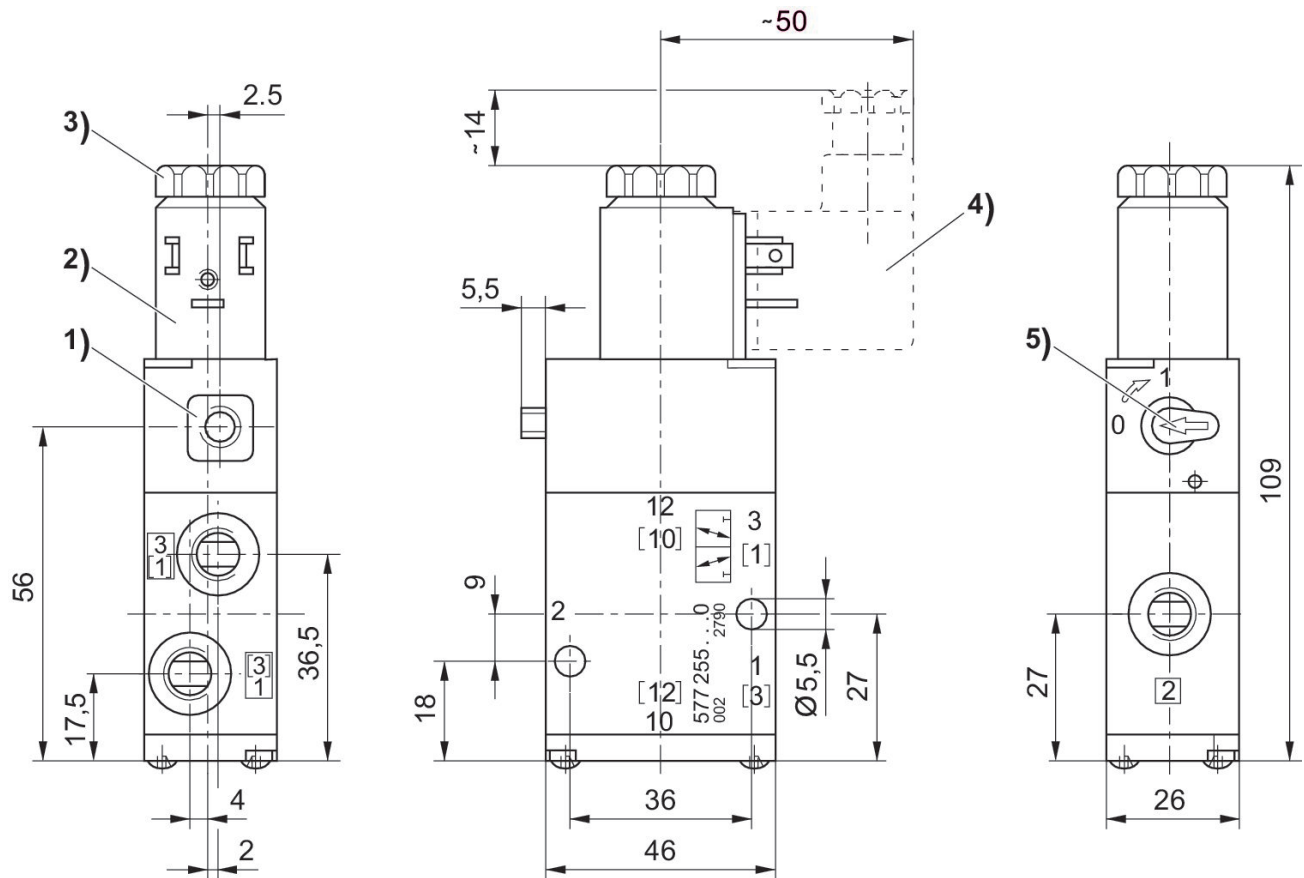
The min. control pressure must be adhered to, since otherwise faulty switching and valve failure may result!

The pressure dew point must be at least 15 °C less than ambient and medium temperature and may not exceed 3 °C.

The oil content of compressed air must remain constant during the life cycle.

Use only the approved oils from AVENTICS. Further information can be found in the "Technical information" document (available in <https://www.emerson.com/en-us/support>).

Dimensions



- 1) Only with separate pilot control G 1/8
- 2) Coil can be rotated at 90° intervals
- 3) After removal of cap M5 internal thread
- 4) Valve plug connector can be plugged at 180° intervals
- 5) Manual override