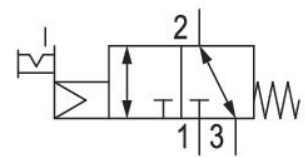


3/2-directional valve, Series CD04

5772505302

General series information
AVENTICS Series CD04 Directional valves

- The AVENTICS Series CD consists of various spool valves with an extremely durable die-cast zinc housing. Its electrical, pneumatic, or mechanical actuating controls (roller, lever, pedal, or plunger) make the Series CD ideal for applications in harsh environments.
- For demanding environments



Technical data

Industry
Activation
Valve type
basic valve with electrical connector
Switching principle
Valve function

Actuating control
Sealing principle
Connection type
Manual override

Industrial
Electrically
Spool valve, positive overlapping
Basic valve without coil
3/2, with spring return
NC
NO
Single Solenoid
soft seal
Pipe connection
with detent

Compressed air connection input
Compressed air connection output
Compressed air connection, exhaust

M10x1
M10x1
M10x1

Pilot control exhaust with directional pilot air exhaust
Compressed air connection pilot exhaust M5

Nominal flow Qn 900 l/min
Nominal flow Qn 1 to 2 900 l/min
Nominal flow Qn 2 to 3 900 l/min

Working pressure min. 3 bar
Working pressure max. 10 bar
Control pressure min. 3 bar
Control pressure max. 10 bar

Electrical connection type Plug
Electrical connection size EN 175301-803, form B
Electrical connection number of poles 3-pin
Connector standard EN 175301-803:2006
Protection class with connection IP65

Pilot Internal
Coil width 22 mm
Pilot valve width 26 mm
Compatibility index 14

Duty cycle 100 %

Min. ambient temperature -15 °C
Max. ambient temperature 50 °C
Min. medium temperature -15 °C
Max. medium temperature 50 °C
Medium Compressed air
Oil content of compressed air min. 0 mg/m³
Oil content of compressed air max. 1 mg/m³
Max. particle size 50 µm

Weight 0.25 kg

Material

Housing material Die cast zinc
Polyamide fiber-glass reinforced

Seal material
Part No.

Acrylonitrile butadiene rubber
5772505302

Technical information

option valve: The input and output compressed air connections can be exchanged. The valve can thereby be used in the NC or NO operating mode.

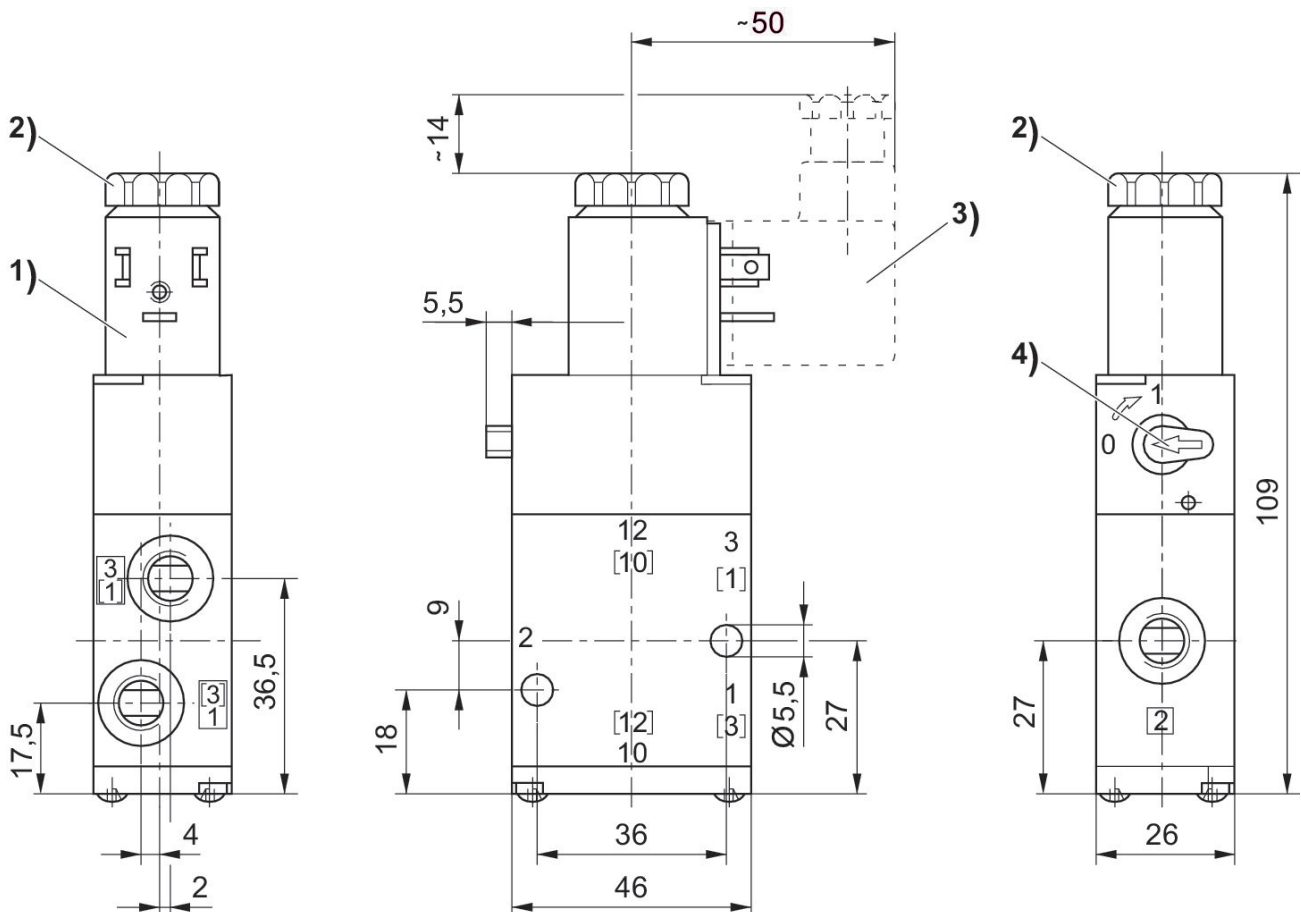
The min. control pressure must be adhered to, since otherwise faulty switching and valve failure may result!

The pressure dew point must be at least 15 °C less than ambient and medium temperature and may not exceed 3 °C.

The oil content of compressed air must remain constant during the life cycle.

Use only the approved oils from AVENTICS. Further information can be found in the "Technical information" document (available in <https://www.emerson.com/en-us/support>).

Dimensions



- 1) Coil can be rotated at 90° intervals
- 2) After removal of cap M5 internal thread
- 3) Valve plug connector can be plugged at 180° intervals
- 4) Manual override