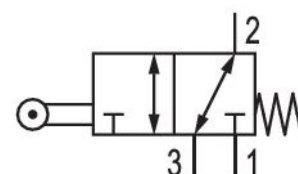


# 3/2-directional valve, Series CD07

5634410000

AVENTICS Series CD07 Directional valves

- $Q_n = 1200 \dots 1400 \text{ l/min}$



## Technical data

Industry

Activation

Frame size

Valve type

Switching principle

Valve function

Actuating control

Plate connection

Actuating element

Sealing principle

Industrial

Mechanical

CD07

Spool valve, positive overlapping

3/2, with spring return

NC/NO

Single Solenoid

Pipe connection

Roller

soft seal

Compressed air connection

Compressed air connection type

Compressed air connection input

Compressed air connection output

M14x1,5

Internal thread

M14x1,5

M14x1,5

Compressed air connection, exhaust	M14x1,5
Nominal flow Qn	1400 l/min
Working pressure min.	-0.95 bar
Working pressure max	10 bar
actuating force min.	40 N
Certificates	Suitable for ATEX
ATEX	Suitable for ATEX
Min. ambient temperature	-25 °C
Max. ambient temperature	80 °C
Min. medium temperature	-25 °C
Max. medium temperature	80 °C
Medium	Compressed air
Oil content of compressed air min.	0 mg/m <sup>3</sup>
Oil content of compressed air max.	1 mg/m <sup>3</sup>
Max. particle size	5 µm
Weight	0.45 kg

## Material

Housing material	Die cast zinc Polyamide fiber-glass reinforced
Seal material	Acrylonitrile butadiene rubber
Material actuating control	Stainless Steel
Part No.	5634410000

## Technical information

option valve: The input and output compressed air connections can be exchanged. The valve can thereby be used in the NC or NO operating mode.

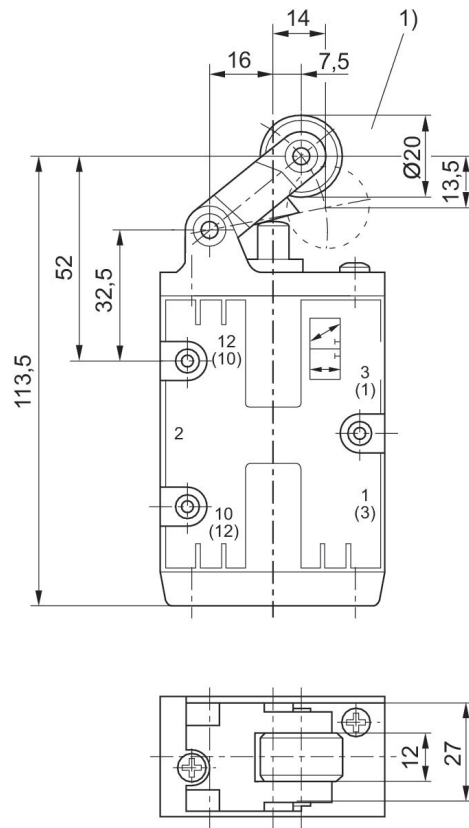
The min. control pressure must be adhered to, since otherwise faulty switching and valve failure may result!

The pressure dew point must be at least 15 °C less than ambient and medium temperature and may not exceed 3 °C.

The oil content of compressed air must remain constant during the life cycle.

Use only the approved oils from AVENTICS. Further information can be found in the "Technical information" document (available in <https://www.emerson.com/en-us/support>).

## Dimensions



1) approach angle of rollers max. 30°