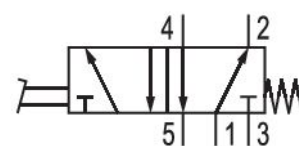
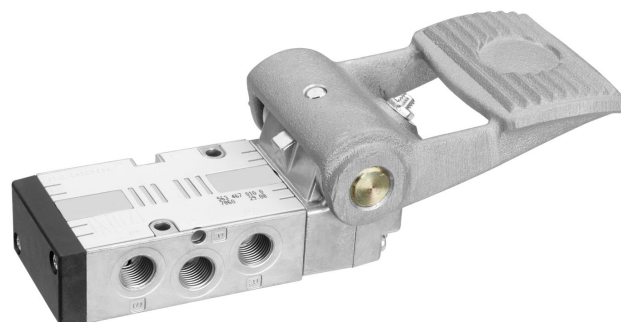


5/2-directional valve, Series CD07

R432016624

Series CD07

- $Q_n = 1200 \dots 1400 \text{ l/min}$



Technical data

Industry

Industrial

Activation

Mechanical

Type

Inch version

Frame size

CD07 - inch

Valve type

Spool valve, positive overlapping

Switching principle

5/2, with spring return

Actuating control

Single Solenoid

Plate connection

Pipe connection

Actuating element

Pedal

Sealing principle

soft seal

Compressed air connection

1/4 NPT

Compressed air connection type

Internal thread

Compressed air connection input

1/4 NPT

Compressed air connection output

1/4 NPT

Compressed air connection, exhaust	1/4 NPT
Nominal flow Qn	1200 l/min
Nominal flow Qn 1 to 2	1200 l/min
Nominal flow Qn 2 to 3	1200 l/min
Working pressure min.	-0.95 bar
Working pressure max	10 bar
actuating force min.	40 N
ATEX	Suitable for ATEX
Min. ambient temperature	-30 °C
Max. ambient temperature	80 °C
Min. medium temperature	-30 °C
Max. medium temperature	80 °C
Medium	Compressed air
Oil content of compressed air min.	0 mg/m ³
Oil content of compressed air max.	1 mg/m ³
Max. particle size	50 µm
Weight	0.76 kg

Material

Part No.	R432016624
----------	------------

Technical information

The min. control pressure must be adhered to, since otherwise faulty switching and valve failure may result!

The pressure dew point must be at least 15 °C less than ambient and medium temperature and may not exceed 3 °C.

The oil content of compressed air must remain constant during the life cycle.

Use only the approved oils from AVENTICS. Further information can be found in the "Technical information" document (available in <https://www.emerson.com/en-us/support>).

Dimensions

