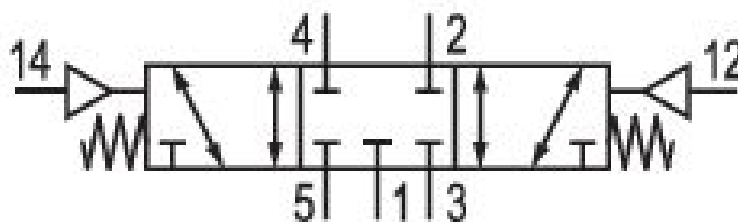
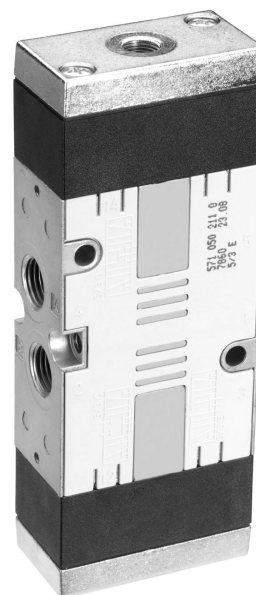


# 5/3-directional valve, Series CD07

5710502120

AVENTICS Series CD07 Directional valves

- $Q_n = 900 \dots 1400 \text{ l/min}$



## Technical data

Industry

Industrial

Activation

Pneumatically

Frame size

CD07

Valve type

Spool valve, positive overlapping

Switching principle

5/3, closed center

Valve function

Closed Center

Sealing principle

soft seal

Connection type

Pipe connection

Compressed air connection

G 1/4

Standard compressed air connection

according to ISO 228-1

Compressed air connection input

G 1/4

Compressed air connection output	G 1/4
Compressed air connection, exhaust	G 1/4
Compressed air connection pilot input	G 1/8
Compressed air connection pilot exhaust	G 1/8
Nominal flow Qn	900 l/min
Nominal flow Qn 1 to 2	1070 l/min
Nominal flow Qn 2 to 3	950 l/min
Working pressure min.	-0.95 bar
Working pressure max	10 bar
Control pressure min.	3 bar
Control pressure max.	10 bar
Certificates	Suitable for ATEX
ATEX	Suitable for ATEX
Min. ambient temperature	-25 °C
Max. ambient temperature	80 °C
Min. medium temperature	-25 °C
Max. medium temperature	80 °C
Medium	Compressed air
Oil content of compressed air min.	0 mg/m <sup>3</sup>
Oil content of compressed air max.	1 mg/m <sup>3</sup>
Max. particle size	50 µm
Mounting on manifold strip	P-strip PRS strip
Weight	1.15 kg

## Material

Housing material	Die cast zinc Polyamide fiber-glass reinforced
Seal material	Acrylonitrile butadiene rubber
Part No.	5710502120

## Technical information

The min. control pressure must be adhered to, since otherwise faulty switching and valve failure may result!

The pressure dew point must be at least 15 °C less than ambient and medium temperature and may not exceed 3 °C.

The oil content of compressed air must remain constant during the life cycle.

Use only the approved oils from AVENTICS. Further information can be found in the "Technical information" document (available in <https://www.emerson.com/en-us/support>).

## Dimensions

