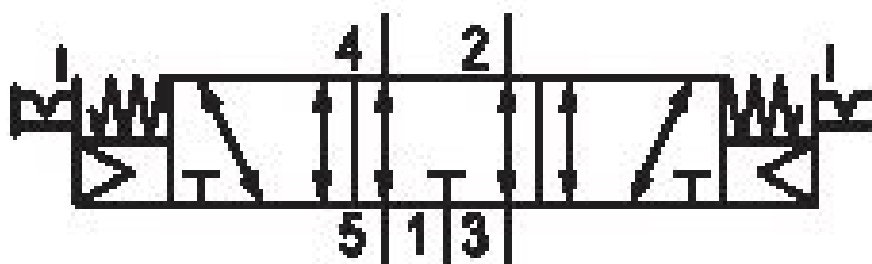


# 5/3-directional valve, Series CD07

## R412011158

General series information  
AVENTICS Series CD07 Directional valves

- The AVENTICS Series CD consists of various spool valves with an extremely durable die-cast zinc housing. Its electrical, pneumatic, or mechanical actuating controls (roller, lever, pedal, or plunger) make the Series CD ideal for applications in harsh environments.
- For demanding environments



### Technical data

Industry  
Activation  
Frame size  
Valve type  
basic valve with electrical connector  
Switching principle  
Actuating control  
Sealing principle  
Connection type  
Manual override

Industrial  
Electrically  
CD07  
Spool valve, positive overlapping  
Basic valve without coil  
5/3, exhausted center  
Double Solenoid  
soft seal  
Pipe connection  
with detent

Compressed air connection

G 1/4

|   |                                     |
|---|-------------------------------------|
| Standard compressed air connection      | according to ISO 228-1              |
| Compressed air connection input         | G 1/4                               |
| Compressed air connection output        | Namur base plate                    |
| Compressed air connection, exhaust      | G 1/4                               |
| Pilot control exhaust                   | with directional pilot air exhaust  |
| Compressed air connection pilot exhaust | M5                                  |
|   |                                     |
| Nominal flow Qn                         | 900 l/min                           |
| Nominal flow Qn 1 to 2                  | 1030 l/min                          |
| Nominal flow Qn 2 to 3                  | 880 l/min                           |
|   |                                     |
| Working pressure min.                   | 3 bar                               |
| Working pressure max                    | 10 bar                              |
|   |                                     |
| Electrical connection type              | Plug                                |
| Electrical connection size              | EN 175301-803, form A               |
| Electrical connection number of poles   | 3-pin                               |
| Connector standard                      | EN 175301-803:2006                  |
| Reverse polarity protection             | Protected against polarity reversal |
|   |                                     |
| Pilot                                   | Internal                            |
| Pilot valve width                       | 30 mm                               |
| Compatibility index                     | 13<br>14                            |
|   |                                     |
| Duty cycle                              | 100 %                               |
|   |                                     |
| Standards                               | NAMUR                               |
| Certificates                            | ATEX optional                       |
| ATEX                                    | ATEX optional                       |
| Min. ambient temperature                | 0 °C                                |
| Max. ambient temperature                | 50 °C                               |
| Min. medium temperature                 | 0 °C                                |
| Max. medium temperature                 | 50 °C                               |
| Medium                                  | Compressed air                      |
| Oil content of compressed air min.      | 0 mg/m <sup>3</sup>                 |
| Oil content of compressed air max.      | 1 mg/m <sup>3</sup>                 |
| Max. particle size                      | 50 µm                               |

## Material

|                  |   |
|------------------|---|
| Housing material | Die cast zinc<br>Polyamide fiber-glass reinforced |
| Seal material    | Acrylonitrile butadiene rubber                    |
| Part No.         | R412011158  |

## Technical information

The min. control pressure must be adhered to, since otherwise faulty switching and valve failure may result!

The pressure dew point must be at least 15 °C less than ambient and medium temperature and may not exceed 3 °C.

The oil content of compressed air must remain constant during the life cycle.

Use only the approved oils from AVENTICS. Further information can be found in the "Technical information" document (available in <https://www.emerson.com/en-us/support>).

