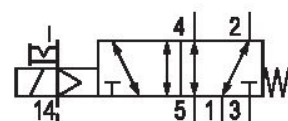
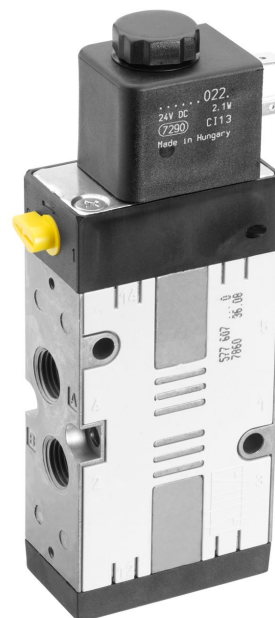


5/2-directional valve, Series CD07

R432016605

General series information
AVENTICS Series CD07 Directional valves

- The AVENTICS Series CD consists of various spool valves with an extremely durable die-cast zinc housing. Its electrical, pneumatic, or mechanical actuating controls (roller, lever, pedal, or plunger) make the Series CD ideal for applications in harsh environments.



Technical data

Industry

Activation

Frame size

Valve type

Switching principle

Actuating control

Sealing principle

Connection type

Manual override

Industrial

Electrically

CD07 - inch

Spool valve, positive overlapping

5/2, with spring return

Single Solenoid

soft seal

Pipe connection

with detent

Compressed air connection

Standard compressed air connection

Compressed air connection input

Compressed air connection output

Compressed air connection, exhaust

Pilot control exhaust

1/4 NPT

according to ISO 228-1

1/4 NPT

1/4 NPT

1/4 NPT

with directional pilot air exhaust

| | |
|---|-------------------------------------|
| Compressed air connection pilot input | 1/8 NPT |
| Compressed air connection pilot exhaust | M5 |
| Nominal flow Qn | 1200 l/min |
| Nominal flow Qn 1 to 2 | 1200 l/min |
| Nominal flow Qn 2 to 3 | 1200 l/min |
| Working pressure min. | 3 bar |
| Working pressure max. | 10 bar |
| Control pressure min. | 3 bar |
| Control pressure max. | 10 bar |
| Electrical connection type | Plug |
| Electrical connection size | EN 175301-803, form A |
| Electrical connection number of poles | 3-pin |
| Connector standard | EN 175301-803:2006 |
| Protection class with connection | IP65 |
| Reverse polarity protection | Protected against polarity reversal |
| Operational voltage AC at 50 Hz | 110 V |
| Voltage tolerance AC 50 Hz | -10% / +10% |
| Operational voltage AC at 60 Hz | 110 V |
| Voltage tolerance AC 60 Hz | -10% / +10% |
| Pilot | External |
| Coil width | 30 mm |
| Compatibility index | 14 |
| Holding power AC 50 Hz | 3.7 VA |
| Holding power AC 60 Hz | 3.7 VA |
| Switch-on power AC 50 Hz | 6.4 VA |
| Switch-on power AC 60 Hz | 6.4 VA |
| Duty cycle | 100 % |
| Typ. switch-on time | 25 ms |
| Typ. switch-off time | 45 ms |
| Min. ambient temperature | -15 °C |
| Max. ambient temperature | 50 °C |
| Min. medium temperature | -15 °C |
| Max. medium temperature | 50 °C |
| Medium | Compressed air |

| | |
|------------------------------------|----------------------|
| Oil content of compressed air min. | 0 mg/m ³ |
| Oil content of compressed air max. | 1 mg/m ³ |
| Max. particle size | 50 µm |
| Mounting on manifold strip | P-strip PRS strip |
| Weight | 0.57 kg |

Material

| | |
|------------------|---|
| Housing material | Polyamide fiber-glass reinforced Die cast zinc |
| Seal material | Acrylonitrile butadiene rubber |
| Part No. | R432016605 |

Technical information

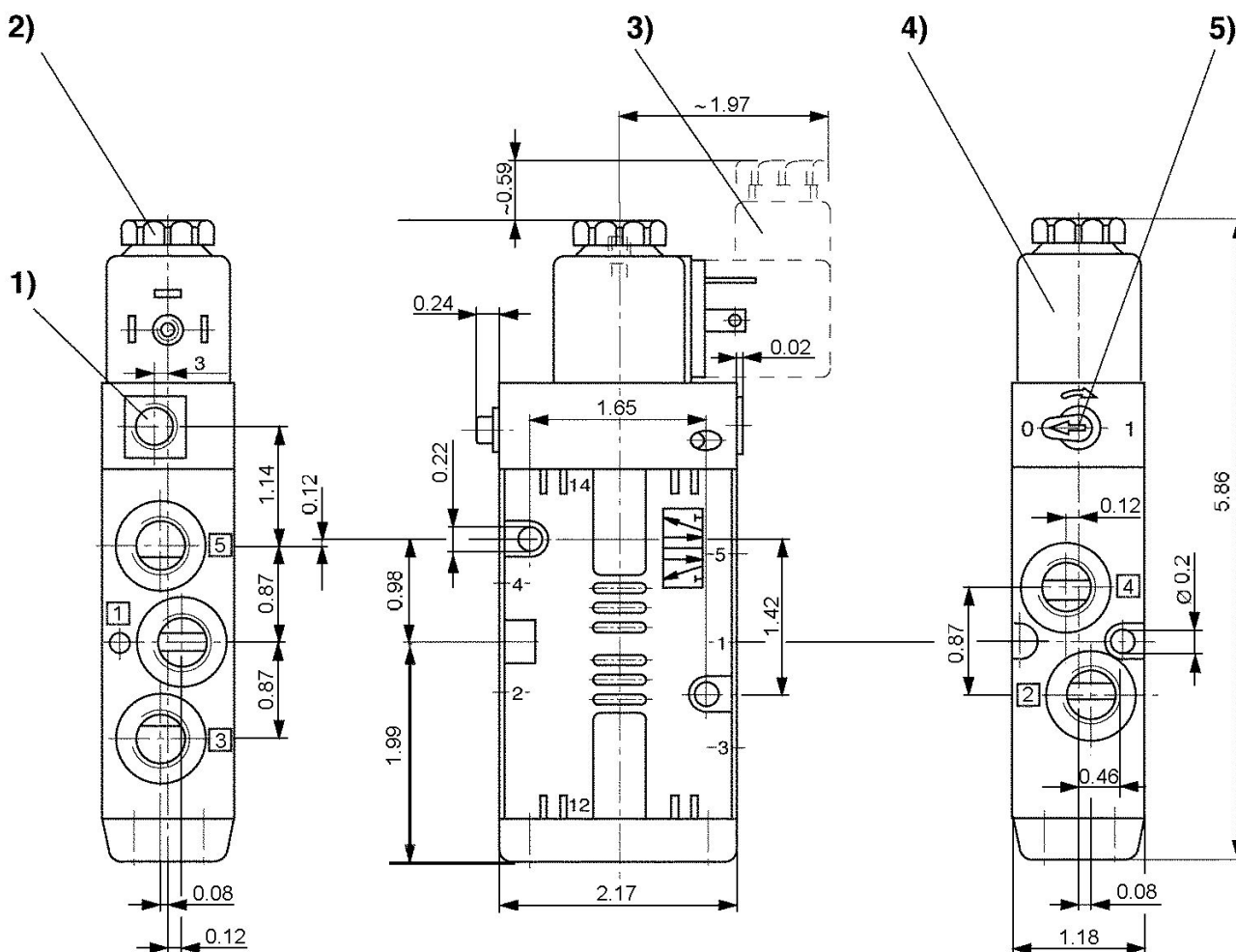
The min. control pressure must be adhered to, since otherwise faulty switching and valve failure may result!

The pressure dew point must be at least 15 °C less than ambient and medium temperature and may not exceed 3 °C.

The oil content of compressed air must remain constant during the life cycle.

Use only the approved oils from AVENTICS. Further information can be found in the "Technical information" document (available in <https://www.emerson.com/en-us/support>).

Dimensions in inches



- 1) Only with separate pilot control G 1/8 2) After removal of cap M5 internal thread 3) Valve plug connector
4) Coil can be plugged at 45° intervals 5) Manual override