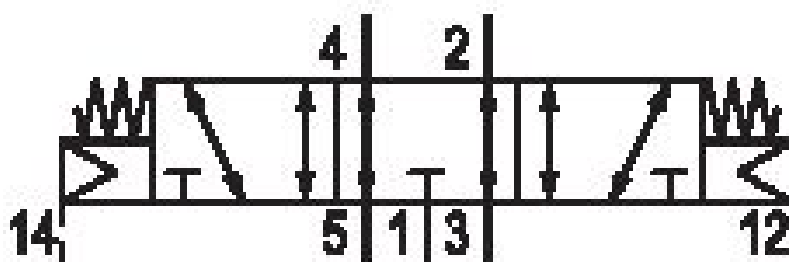


5/3-directional valve, Series CD12

5725685202

General series information
AVENTICS Series CD12 Directional valves

- The AVENTICS Series CD consists of various spool valves with an extremely durable die-cast zinc housing. Its electrical, pneumatic, or mechanical actuating controls (roller, lever, pedal, or plunger) make the Series CD ideal for applications in harsh environments.



Technical data

Industry
Activation
Valve type
basic valve with electrical connector
Switching principle
Valve function
Actuating control
Sealing principle
Connection type

Industrial
Electrically
Spool valve, positive overlapping
Basic valve without pilot valve
5/3, exhausted center
Exhausted Center
Double Solenoid
soft seal
Pipe connection

Standard compressed air connection
Compressed air connection input

according to ISO 228-1
G 1/2

Compressed air connection output	G 1/2
Compressed air connection, exhaust	G 1/2
Pilot control exhaust	with directional pilot air exhaust
Compressed air connection pilot input	G 1/8

Nominal flow Qn 1 to 2	3600 l/min
Nominal flow Qn 2 to 3	4100 l/min

Working pressure min.	-0.95 bar
Working pressure max	16 bar
Control pressure min.	3 bar
Control pressure max.	16 bar

Electrical connection type	Plug
Electrical connection size	EN 175301-803, form A
Electrical connection number of poles	3-pin
Connector standard	EN 175301-803:2006

Pilot	External
Coil width	30 mm
Pilot valve width	30 mm

Duty cycle	100 %
------------	-------

ATEX	ATEX optional
Min. ambient temperature	-15 °C
Max. ambient temperature	70 °C
Min. medium temperature	-15 °C
Max. medium temperature	70 °C
Medium	Compressed air
Oil content of compressed air min.	0 mg/m ³
Oil content of compressed air max.	1 mg/m ³
Max. particle size	50 µm

Weight	1 kg
--------	------

Material

Housing material	Aluminum Polyamide fiber-glass reinforced
------------------	--

Seal material	Acrylonitrile butadiene rubber Polyurethane
Part No.	5725685202

Technical information

ATEX optional: ATEX version can be produced by combining the basic valve without coil with an ATEX coil. ATEX ID: see ATEX coils catalog page.

*Note: Basic valves feature a maximum working pressure of 16 bar. When combined with standard CNOMO pilots, the maximum working pressure is 10 bar.

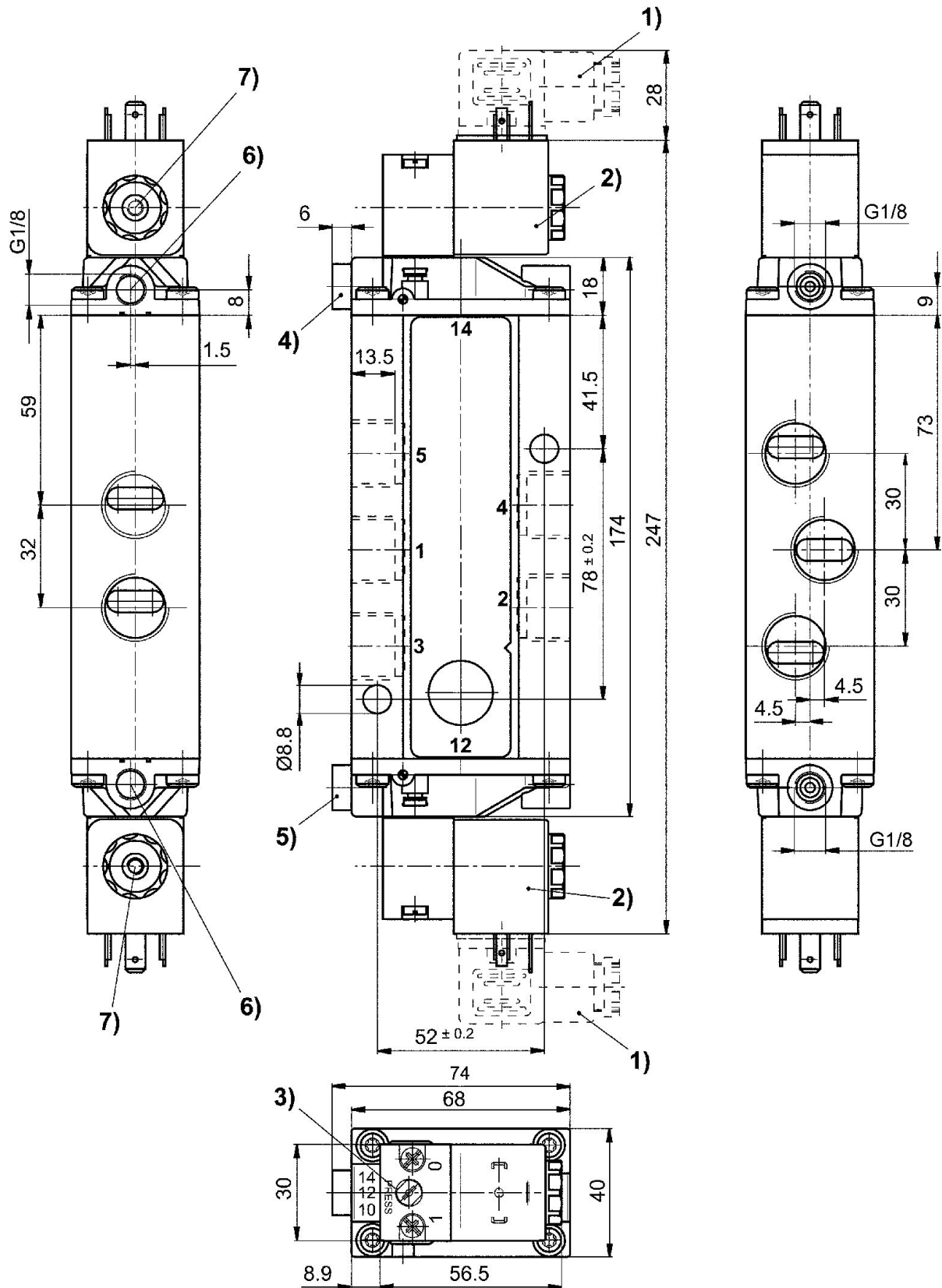
The min. control pressure must be adhered to, since otherwise faulty switching and valve failure may result!

The pressure dew point must be at least 15 °C less than ambient and medium temperature and may not exceed 3 °C.

The oil content of compressed air must remain constant during the life cycle.

Use only the approved oils from AVENTICS. Further information can be found in the "Technical information" document (available in <https://www.emerson.com/en-us/support>).

Dimensions



- 1) Valve plug connector 2) Coil can be rotated at 90° intervals 3) Manual override
4) Port X, side 14 5) Port X, side 12 6) Port without function 7) Pilot valve exhaust, M5