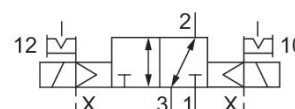


3/2-directional valve, Series CD12-LT

R414012759

General series information Series CD12-LT

- AVENTICS series CD12-LT consists of various spool valves with an extremely durable aluminum housing. CD12-LT is designed to operate under extreme ambient temperatures from -40 °C to +70 °C and extended voltage tolerance from -30 % to +25 %. The CD12-LT series is ideal for applications in harsh environments and complies with international standards for railroad applications.



Technical data

| | |
|---------------------------------------|-----------------------------------|
| Industry | Rail |
| Activation | Electrically |
| Valve type | Spool valve, positive overlapping |
| Switching principle | 3/2, double solenoid |
| Valve function | NC |
| Actuating control | Double Solenoid |
| Sealing principle | soft seal |
| Connection type | Pipe connection |
| Manual override | with detent |
| Compressed air connection input | G 1/2 |
| Compressed air connection output | G 1/2 |
| Compressed air connection, exhaust | G 1/2 |
| Compressed air connection pilot input | G 1/8 |
| Nominal flow Qn 1 to 2 | 4000 l/min |

| | |
|---------------------------------------|-------------------------------------|
| Nominal flow Qn 2 to 3 | 4000 l/min |
| Working pressure min. | 3 bar |
| Working pressure max. | 10 bar |
| Control pressure min. | 3 bar |
| Control pressure max. | 10 bar |
| Electrical connection type | Plug |
| Electrical connection size | EN 175301-803, form A |
| Electrical connection number of poles | 3-pin |
| Connector standard | EN 175301-803:2006 |
| Protection class with connection | IP65 |
| Reverse polarity protection | Protected against polarity reversal |
| Operational voltage | 110 V DC |
| Voltage tolerance DC | -30% / +25% |
| Pilot | External |
| Pilot valve width | 30 mm |
| Power consumption DC | 6 W |
| Duty cycle | 100 % |
| Typ. switch-on time | 80 ms |
| Typ. switch-off time | 200 ms |
| Min. ambient temperature | -40 °C |
| Max. ambient temperature | 70 °C |
| Min. medium temperature | -40 °C |
| Max. medium temperature | 70 °C |
| Medium | Compressed air |
| Oil content of compressed air min. | 0 mg/m ³ |
| Oil content of compressed air max. | 1 mg/m ³ |
| Max. particle size | 50 µm |
| Weight | 1.3 kg |

Material

| | |
|------------------|--------------------------------------------------------|
| Housing material | Aluminum, anodized Polyamide fiber-glass reinforced |
| Material Coil | Steel, chrome-plated |

| | |
|---------------|-------------------------------------------------------------------------------------------|
| Seal material | Polyamide Hydrogenated nitrile butadiene rubber Polyurethane Silicone caoutchouc |
| Part No. | R414012759 |

Technical information

Nominal flow Q_n at 6 bar and $\Delta p = 1$ bar

Typ. switch-on/-off time at 20 °C

The min. control pressure must be adhered to, since otherwise faulty switching and valve failure may result!

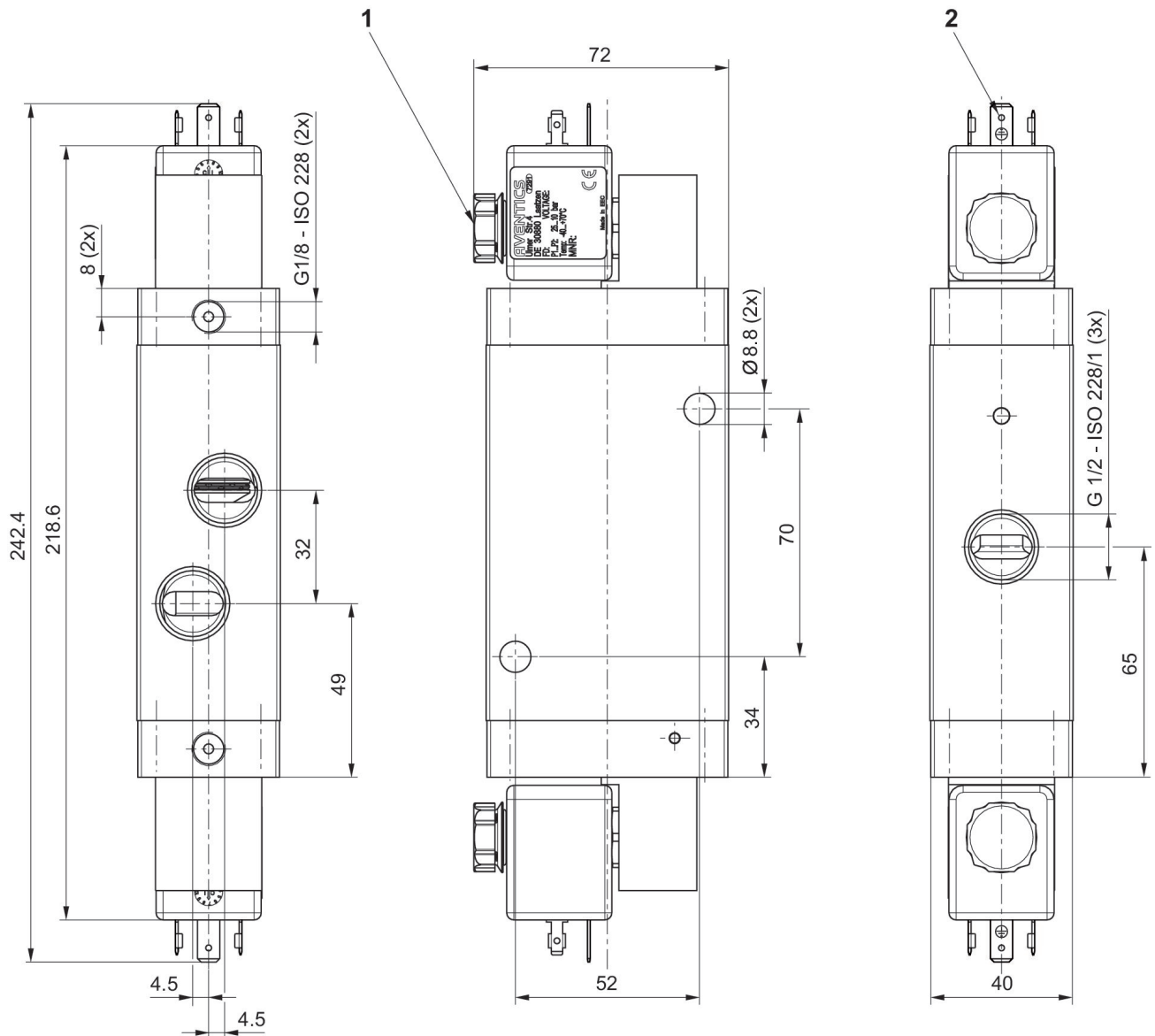
The pressure dew point must be at least 15 °C less than ambient and medium temperature and may not exceed 3 °C.

The oil content of compressed air must remain constant during the life cycle.

Use only the approved oils from AVENTICS. Further information can be found in the "Technical information" document (available in <https://www.emerson.com/en-us/support>).

The protection class is only ensured when the plug is mounted properly. For detailed information, see operating instructions.

Dimensions in mm



- 1) Silencer
- 2) plug, form A