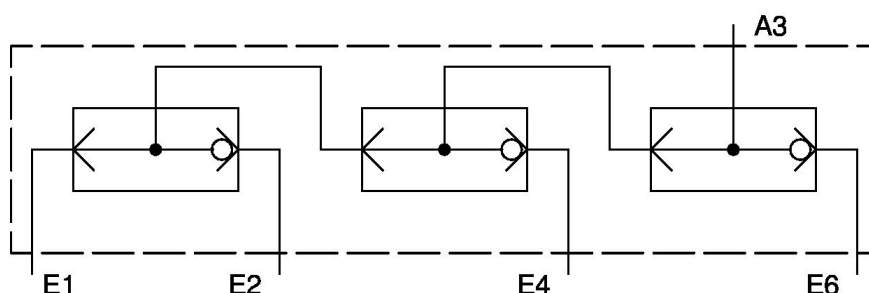


OR unit

0821000006

Logic valves (AND/OR)



Technical data

Industry
Industrial

Sealing principle
Soft Seal

Type
Poppet valve

Medium
Compressed air

Max. particle size
1 μm

Min. ambient temperature
0 $^{\circ}\text{C}$

Max. ambient temperature
80 $^{\circ}\text{C}$

Min. medium temperature
0 $^{\circ}\text{C}$

Max. medium temperature
80 $^{\circ}\text{C}$

Oil content of compressed air min.
0 mg/m^3

Oil content of compressed air max.
1 mg/m^3

Logic function
Shuttle valves (OR)

Connection type
Plate valve with pipe connection

Nominal flow Q_n
80 l/min

Working pressure min.
1 bar

Working pressure max
10 bar

Weight
0.03 kg

Housing material
Polyamide

Seal material
Acrylonitrile butadiene rubber

Part No.
0821000006

Technical information

The pressure dew point must be at least 15 °C under ambient and medium temperature and may not exceed 3 °C .

The oil content of compressed air must remain constant during the life cycle.

Use only the approved oils from AVENTICS. Further information can be found in the “Technical information” document (available in <https://www.emerson.com/en-us/support>).

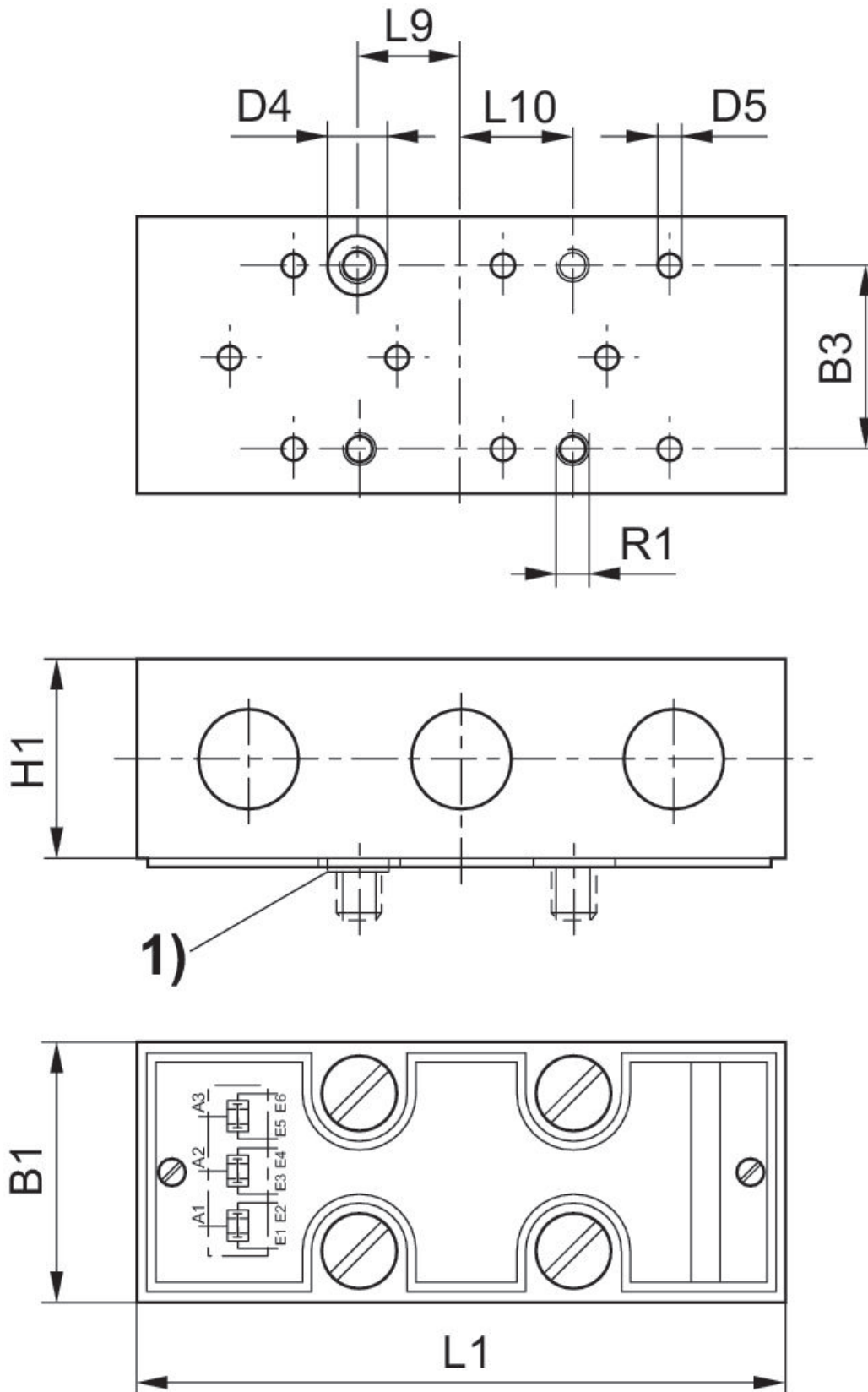
The min. control pressure must be adhered to, since otherwise faulty switching and valve failure may result!

The pressure dew point must be at least 15 °C under ambient and medium temperature and may not exceed 3 °C .

The oil content of compressed air must remain constant during the life cycle.

Use only the approved oils from AVENTICS. Further information can be found in the “Technical information” document (available in <https://www.emerson.com/en-us/support>).

Dimensions



1) pins for securing the position

Dimensions

Part No.	R1	D4	D5	H1	L1	L9	L10	B1	B3
0821000005	M4	6.2	2.5	19	61.5	9.5	11	25	15
0821000006	M4	6.2	2.5	19	61.5	9.5	11	25	15
0821001005	M4	6.2	2.5	19	61.5	9.5	11	25	15

1) pins for securing the position