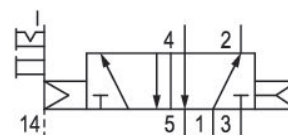
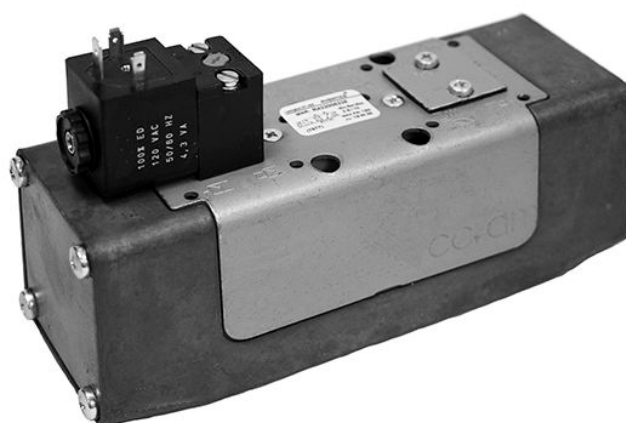


# 5/2-directional valve, Series CERAM™, size 4

## R432002465

General series information  
Series CERAM™, size 4

- Qn max. 7500 l/min



### Technical data

Industry  
Industrial

Activation  
Electrically

Nominal flow Qn  
7500 l/min

Switching principle  
5/2, with air spring return

Working pressure min.  
0 bar

Working pressure max  
10.3 bar

Manual override  
with detent

without detent

Electrical connection type  
Plug

Electrical connection size  
EN 175301-803, form A

Actuating control  
Single Solenoid

Sealing principle  
Ceramic

Pilot  
External

Standards  
ISO 5599-1

Pilot valve width  
30 mm CNOMO

Frame size  
ISO 4

basic valve with electrical connector  
Basic valve without coil

Valve plug connector  
Without valve plug connector

Connection type  
Plate connection

Blocking principle  
Single base plate principle

Can be assembled into blocks  
Can be assembled into blocks

Control pressure min.  
2.5 bar

Control pressure max.  
10.3 bar

Min. ambient temperature  
-15 °C

Max. ambient temperature  
66 °C

Min. medium temperature  
-15 °C

Max. medium temperature  
66 °C

Medium  
Compressed air

Standard compressed air connection  
according to ISO 5599-1

Compressed air connection pilot exhaust  
Base plate ISO 5599-1

Pilot valve width  
30 mm CNOMO

Protection class according to NEMA  
NEMA 4

mounting screws  
M8 with hexagon socket

Mounting screw tightening torque  
2.2 Nm

Weight  
2.09 kg

## Material

Housing material  
Die-cast aluminum

Surface housing  
painted gray

Part No.  
R432002465

## Technical information

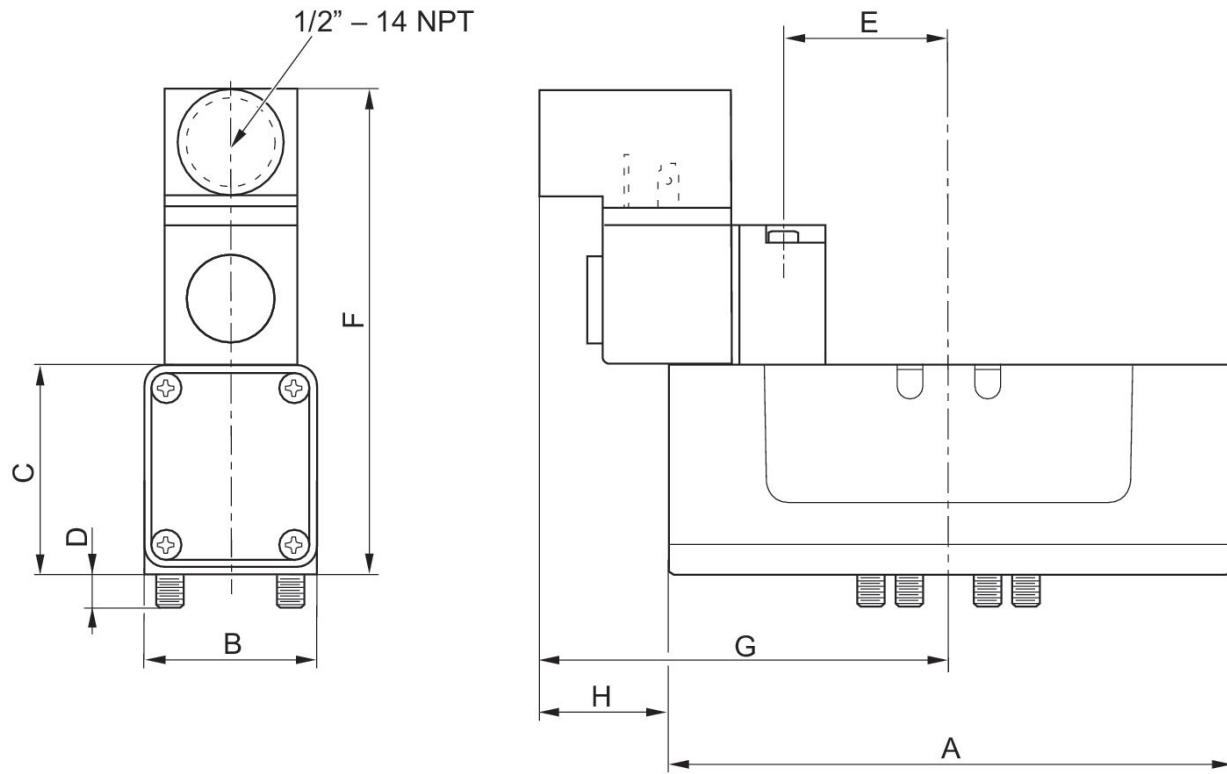
The min. control pressure must be adhered to, since otherwise faulty switching and valve failure may result!

The pressure dew point must be at least 15 °C under ambient and medium temperature and may not exceed 3 °C .

The oil content of compressed air must remain constant during the life cycle.

Use only the approved oils from AVENTICS. Further information can be found in the "Technical information" document (available in <https://www.emerson.com/en-us/support>).

Dimensions in inches



Dimensions in inches

Part No.	A	B	C	D	E	F	G	H
R432030378	8.62	3.09	2.89	0.41	1.62	5.23	6.65	0.68
R432006327	8.62	3.09	2.89	0.41	1.62	5.23	6.65	0.68
R432030352	8.62	3.09	2.89	0.41	1.62	5.23	6.65	0.68
R432006322	8.62	3.09	2.89	0.41	1.62	5.23	6.65	0.68
R432006324	8.62	3.09	2.89	0.41	1.62	5.23	6.65	0.68
R432002468	8.62	3.09	2.89	0.41	1.62	5.23	6.65	0.68
repeat-Column								