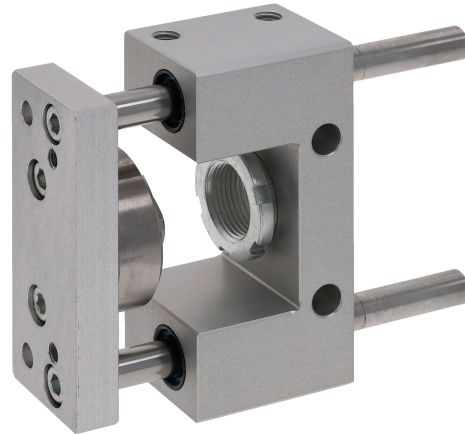


AVENTICS Guide units



Technical data

Industry	Industrial
Piston Ø	12 mm
Stroke	50 mm
Bearing type	Plain bearing
For standard cylinders	ISO 6432
Min. ambient temperature	-20 °C
Max. ambient temperature	80 °C
Weight 0 mm stroke	0.247 kg
Weight +10 mm stroke	0.0078 kg

Material

Bearing housings	Aluminum
Surface bearing housing	colorless anodized
Bearing type	Sintered bronze
Carrying plate	Aluminum
Surface carrying plate	colorless anodized
Material flexible coupling in carrying plate	Stainless Steel
Material guide rods	Hardened heat-treated steel
Surface guide rods	ground

Guide unit GU1, Series CG1

0821401095

Guide units

2023-12-06

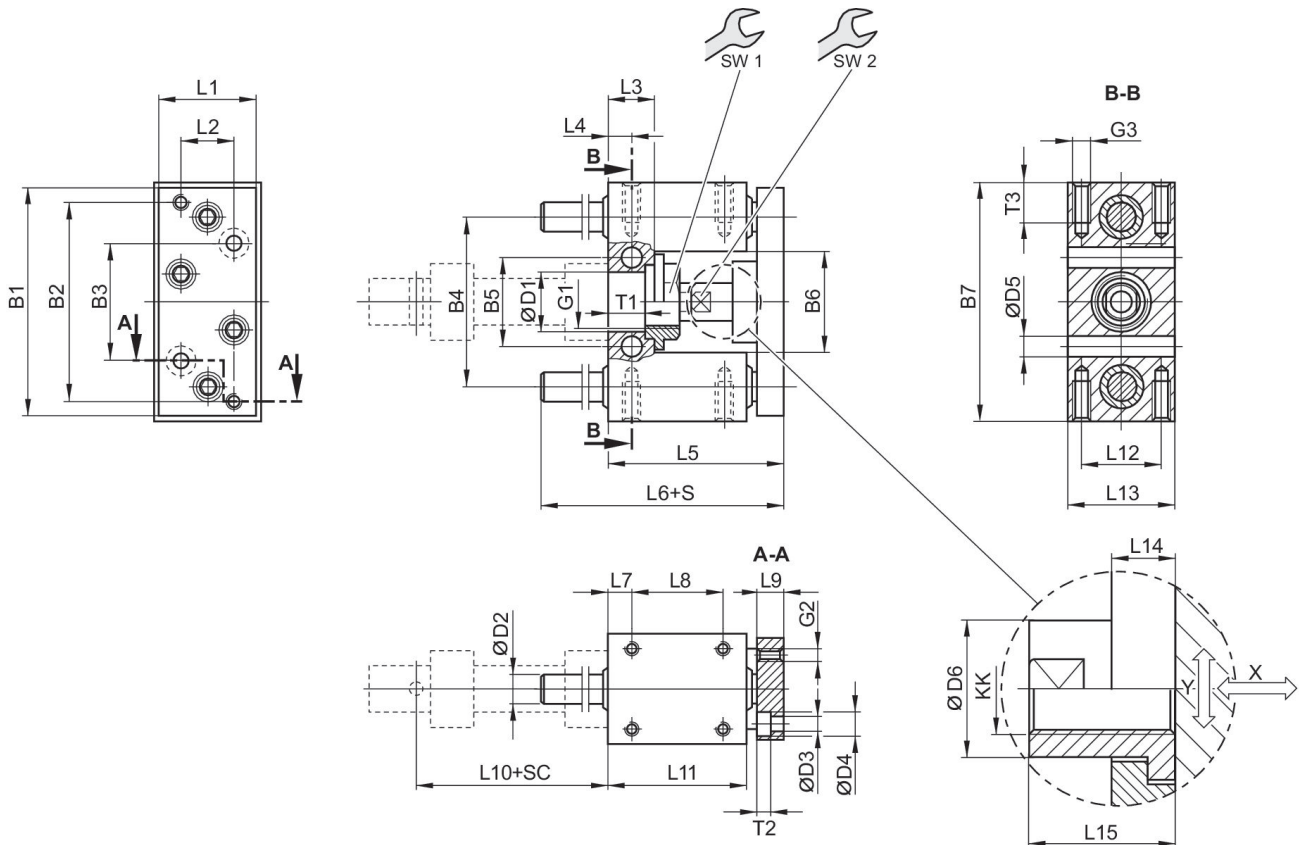
Part No.

0821401095

Technical information

Guide units for cylinder \varnothing 12 also fit on cylinder \varnothing 16

Dimensions



S = stroke
 SC = cylinder stroke
 X = max. play (axial)
 Y = min. play (radial)

Piston \varnothing	B1	B2	B3	B4	B5	B6	B7	D1	D2
12	63	54	32	46	24	27	65	16 H7	8

Piston \varnothing	D3	D4	D5	D6	G1	G2	G3	KK	L1
12	4.5	8	5.5	10	M16x1,5	M4	M4	M6	27

Piston \varnothing	L2	L3	L4	L5	L6	L7	L8	L9	L10
12	15	13	6.5	53	73	6.5	25	10	52.6

Guide unit GU1, Series CG1

0821401095

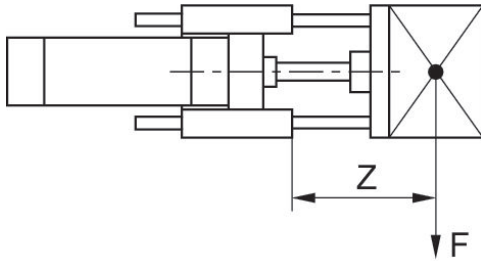
Guide units

2023-12-06

Piston Ø	L11	L12	L13	L14	L15	SW1	SW2	T1	T2
12	38	22	30	7	18	19	8	10.6	4.6

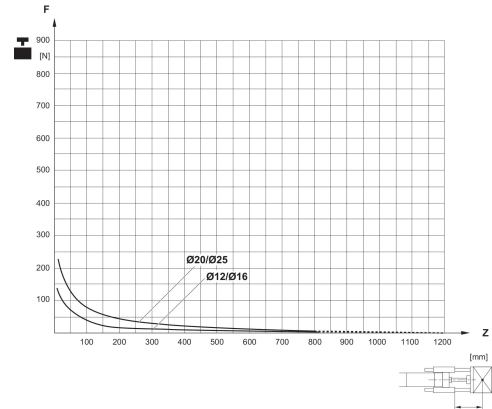
Piston Ø	T3
12	8

Useful load



F = Useful load, Z = Projection

Useful load



F = Useful load, Z = Projection