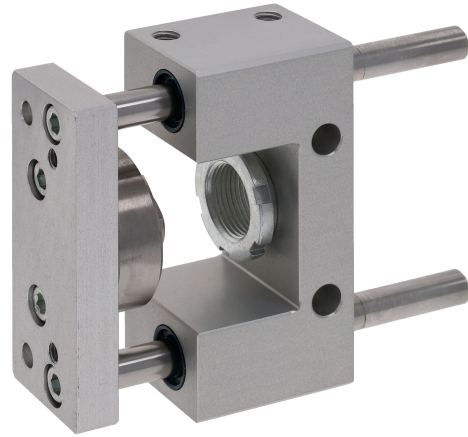


## AVENTICS Guide units



### Technical data

Industry	Industrial
Piston Ø	25 mm
Stroke	100 mm
Bearing type	Plain bearing
For standard cylinders	ISO 6432
Min. ambient temperature	-20 °C
Max. ambient temperature	80 °C
Weight 0 mm stroke	0.66 kg
Weight +10 mm stroke	0.0122 kg

### Material

Bearing housings	Aluminum
Surface bearing housing	colorless anodized
Bearing type	Sintered bronze
Carrying plate	Aluminum
Surface carrying plate	colorless anodized
Material flexible coupling in carrying plate	Stainless Steel
Material guide rods	Hardened heat-treated steel
Surface guide rods	ground

# Guide unit GU1, Series CG1

0821401081

Guide units

2023-12-06

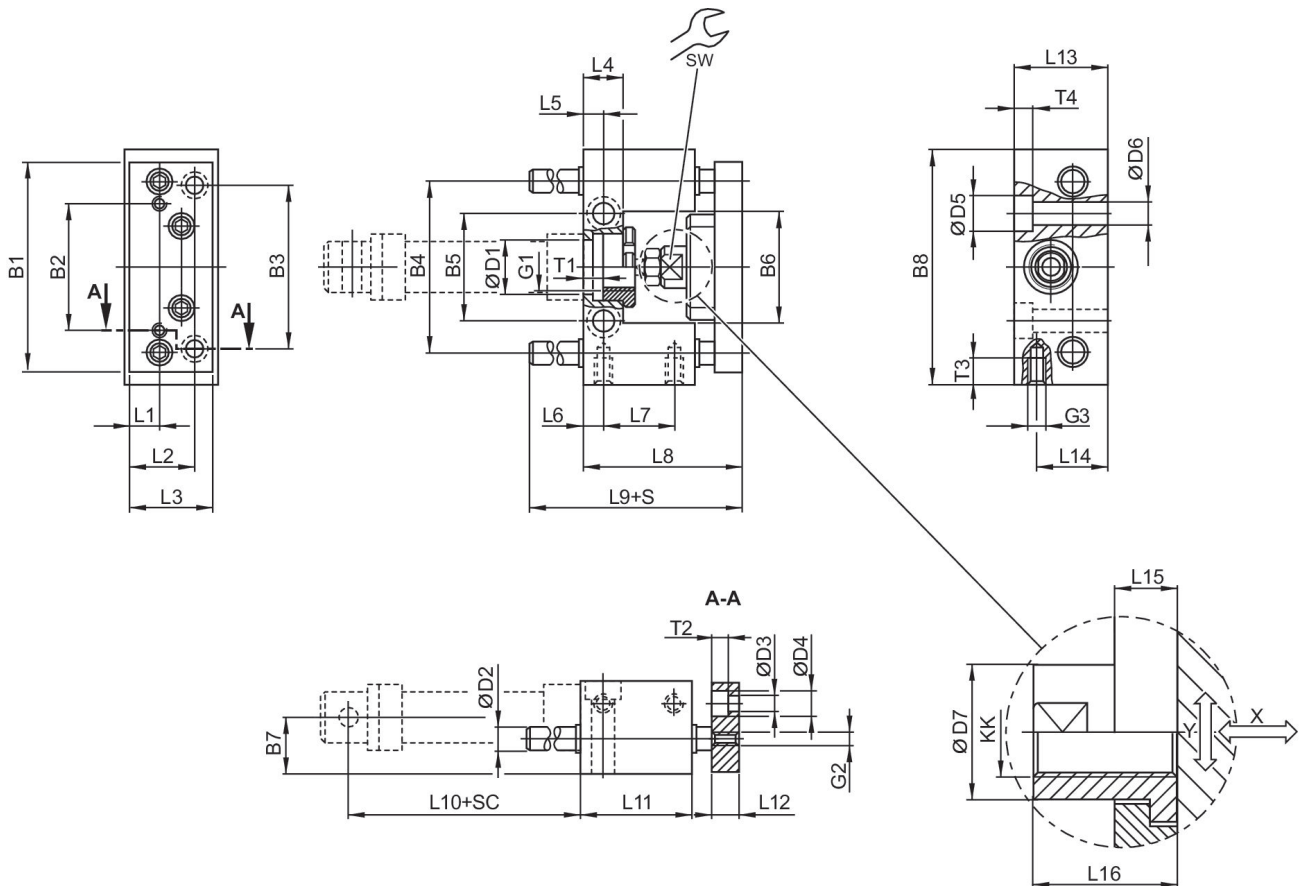
Part No.

0821401081

## Technical information

Guide units for cylinder  $\varnothing 12$  also fit on cylinder  $\varnothing 16$

## Dimensions



S = stroke  
 SC = cylinder stroke  
 X = max. play (axial)  
 Y = min. play (radial)

Piston $\varnothing$	B1	B2	B3	B4	B5	B6	B7	B8	D1
20	90	55	70	74	46.5	48	24	100	22 H7
25	90	55	70	74	46.5	48	24	100	22 H7

Piston $\varnothing$	D2	D3	D4	D5	D6	D7	G1	G2	G3
20	10	6.6	11	15	9	18	M22x1,5	M6	M8
25	10	6.6	11	15	9	18	M22x1,5	M6	M8

# Guide unit GU1, Series CG1

0821401081

Guide units

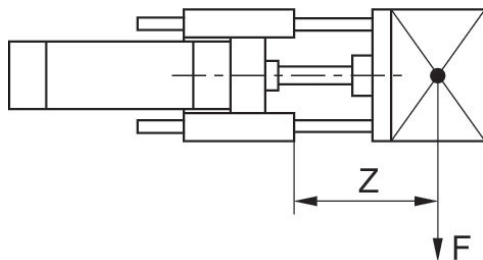
2023-12-06

Piston Ø	KK	L1	L2	L3	L4	L5	L6	L7	L8
20	M8	14	29	38	17	8.5	8	32	65
25	M10x1,25	14	29	38	17	8.5	8	32	71

Piston Ø	L9	L10	L11	L12	L13	L14	L15	L16	T1
20	77	71	48	12	40	30	14	22	8
25	77	76	48	12	40	30	14	22	8

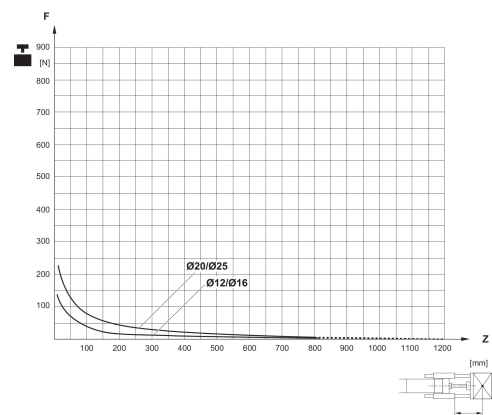
Piston Ø	T2	T3	T4	SW
20	7	14	9	15
25	7	14	9	15

## Useful load



F = Useful load, Z = Projection

## Useful load



F = Useful load, Z = Projection