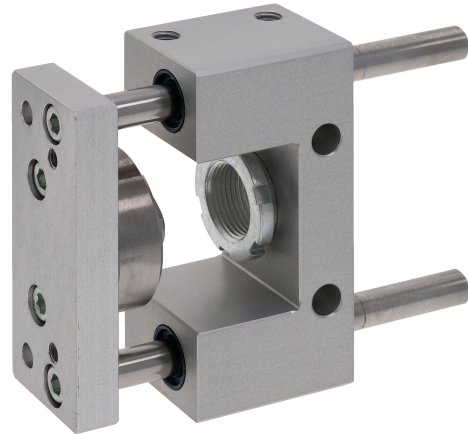


AVENTICS Guide units



Technical data

| | |
|--------------------------|---------------|
| Industry | Industrial |
| Piston Ø | 25 mm |
| Stroke | 600 mm |
| Bearing type | Plain bearing |
| For standard cylinders | ISO 6432 |
| Min. ambient temperature | -20 °C |
| Max. ambient temperature | 80 °C |
| Weight 0 mm stroke | 0.66 kg |
| Weight +10 mm stroke | 0.0122 kg |

Material

| | |
|--|-----------------------------|
| Bearing housings | Aluminum |
| Surface bearing housing | colorless anodized |
| Bearing type | Sintered bronze |
| Carrying plate | Aluminum |
| Surface carrying plate | colorless anodized |
| Material flexible coupling in carrying plate | Stainless Steel |
| Material guide rods | Hardened heat-treated steel |
| Surface guide rods | ground |

Guide unit GU1, Series CG1

0821401086

Guide units

2023-12-06

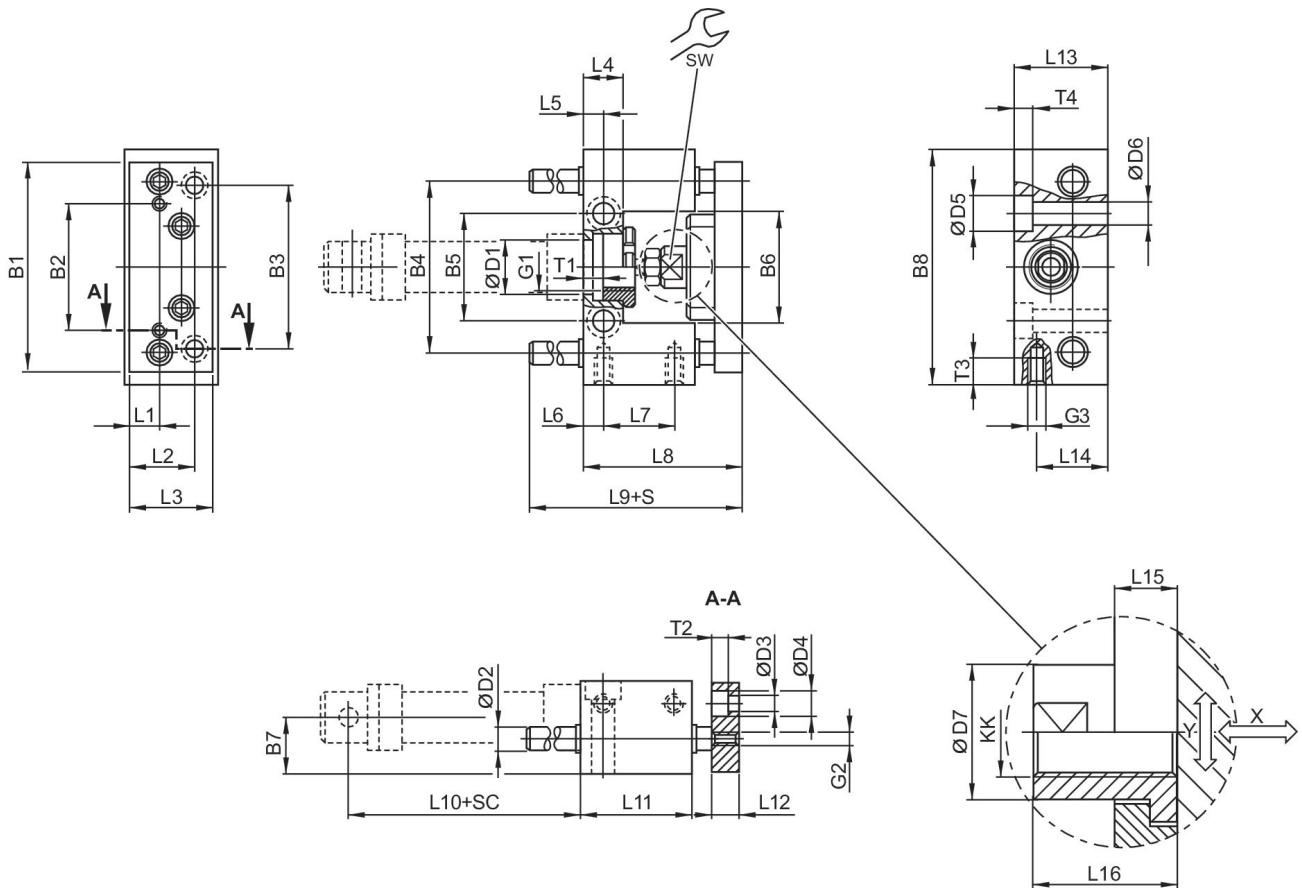
Part No.

0821401086

Technical information

Guide units for cylinder $\varnothing 12$ also fit on cylinder $\varnothing 16$

Dimensions



S = stroke
 SC = cylinder stroke
 X = max. play (axial)
 Y = min. play (radial)

| Piston \varnothing | B1 | B2 | B3 | B4 | B5 | B6 | B7 | B8 | D1 |
|----------------------|----|----|----|----|------|----|----|-----|-------|
| 20 | 90 | 55 | 70 | 74 | 46.5 | 48 | 24 | 100 | 22 H7 |
| 25 | 90 | 55 | 70 | 74 | 46.5 | 48 | 24 | 100 | 22 H7 |

| Piston \varnothing | D2 | D3 | D4 | D5 | D6 | D7 | G1 | G2 | G3 |
|----------------------|----|-----|----|----|----|----|---------|----|----|
| 20 | 10 | 6.6 | 11 | 15 | 9 | 18 | M22x1,5 | M6 | M8 |
| 25 | 10 | 6.6 | 11 | 15 | 9 | 18 | M22x1,5 | M6 | M8 |

Guide unit GU1, Series CG1

0821401086

Guide units

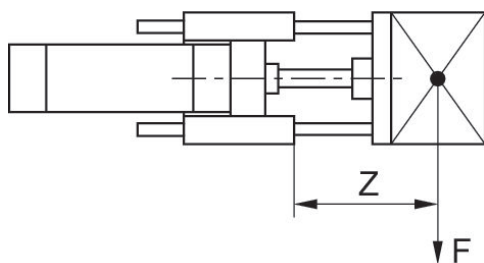
2023-12-06

| Piston Ø | KK | L1 | L2 | L3 | L4 | L5 | L6 | L7 | L8 |
|----------|----------|----|----|----|----|-----|----|----|----|
| 20 | M8 | 14 | 29 | 38 | 17 | 8.5 | 8 | 32 | 65 |
| 25 | M10x1,25 | 14 | 29 | 38 | 17 | 8.5 | 8 | 32 | 71 |

| Piston Ø | L9 | L10 | L11 | L12 | L13 | L14 | L15 | L16 | T1 |
|----------|----|-----|-----|-----|-----|-----|-----|-----|----|
| 20 | 77 | 71 | 48 | 12 | 40 | 30 | 14 | 22 | 8 |
| 25 | 77 | 76 | 48 | 12 | 40 | 30 | 14 | 22 | 8 |

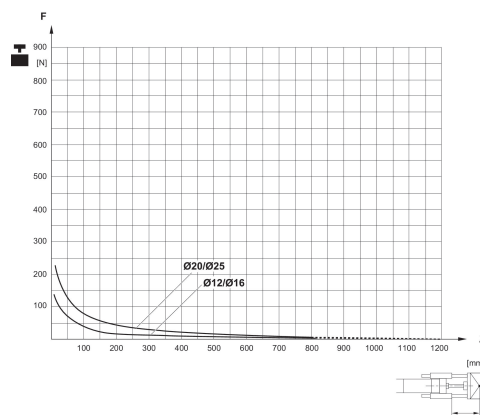
| Piston Ø | T2 | T3 | T4 | SW |
|----------|----|----|----|----|
| 20 | 7 | 14 | 9 | 15 |
| 25 | 7 | 14 | 9 | 15 |

Useful load



F = Useful load, Z = Projection

Useful load



F = Useful load, Z = Projection