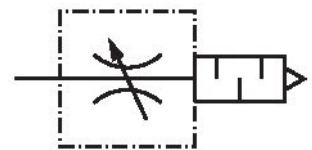
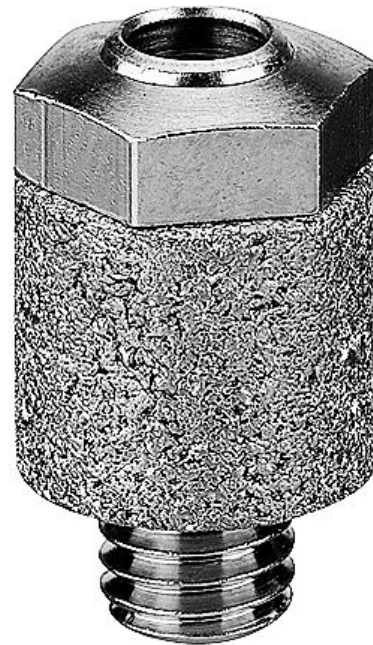


Throttle valve, Series CH02

0821201105

Series CH02

■ $Q_n = [[200] \text{ l/min}] \dots [[4100] \text{ l/min}]$



Technical data

Industry
Industrial

Working pressure min.
0 bar

Working pressure max
10 bar

Min. ambient temperature
-25 °C

Max. ambient temperature
80 °C

Min. medium temperature
-25 °C

Max. medium temperature
80 °C

Port 1
G 1/2

Type
Throttle valve with silencer

Medium
Compressed air

Compressed air connection type
External thread

Flow Q_n
4100 l/min

Tightening torque for silencer max.
16 Nm

Weight
0.135 kg

Housing material
Brass

Surface housing
galvanized

Seal material
Acrylonitrile butadiene rubber

Silencer material
Stainless Steel

Part No.
0821201105

Technical information

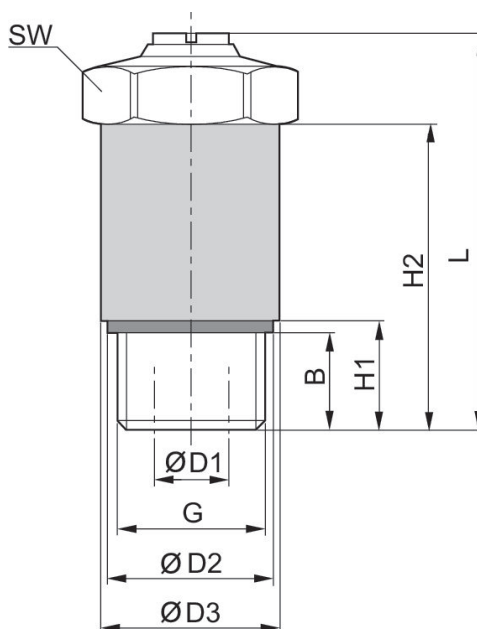
The min. control pressure must be adhered to, since otherwise faulty switching and valve failure may result!

The pressure dew point must be at least 15 °C under ambient and medium temperature and may not exceed 3 °C .

The oil content of compressed air must remain constant during the life cycle.

Use only the approved oils from AVENTICS. Further information can be found in the “Technical information” document (available in <https://www.emerson.com/en-us/support>).

Dimensions



Part No.	Port G	Ø D1	Ø D2	Ø D3	H1	H2	B	L 1)	SW
0821201101	M5	2	7.7	9	3.8	12	12	16.6	8
0821201102	G 1/8	4	13	16	7	24	5.5	31.5	13
0821201103	G 1/4	6.5	17.9	20	10	30	8	37.5	17
0821201104	G 3/8	8.5	21.8	25	10	35	8	45	19
0821201105	G 1/2	12	26.5	30	12	42	10	52	24

1) Max.