

# Piston rod end plate

7472ZZ1445

Ball eye rod  
ends

2023-10-06

## AVENTICS Ball eye rod ends



### Technical data

Industry

Industrial

Thread size

M10x1,5

### Material

Housing material

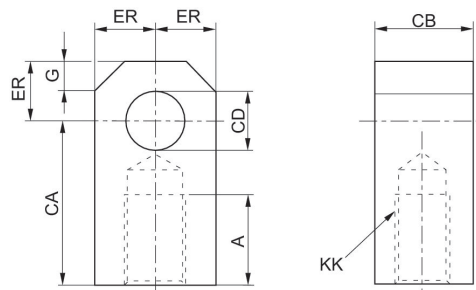
Steel, chrome-plated

Surface housing

galvanized

Part No.

7472ZZ1445



KK	Part No.	Ø	A	CA	CB	CD	ER	G
M10x1,5	7472ZZ1445	25 32	20	36	11	8	9	3

# Piston rod end plate

7472ZZ1445

Ball eye rod  
ends

2023-10-06

KK	Part No.	Ø	A	CA	CB	CD	ER	G
M16x1,5	7472ZZ1446	40 50	30	51	18	12	13	7
M20x1,5	7472ZZ1447	63 80	36	63	22	16	17	10
M27x2	7472ZZ1448	100 125	50	85	30	20	20	13
M36x2	7472ZZ1449	160 200	70	115	40	25	25	15