

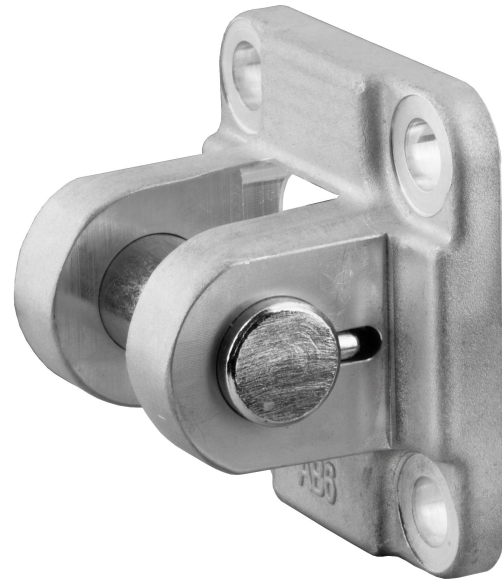
# Clevis mounting AB6, Series CM1

1827001600

Clevis  
mounting

2024-03-26

## AVENTICS Clevis mountings



### Technical data

|                 |            |
|-----------------|------------|
| Industry        | Industrial |
| Standardization | ISO 15552  |
| Piston diameter | 160 mm     |

### Material

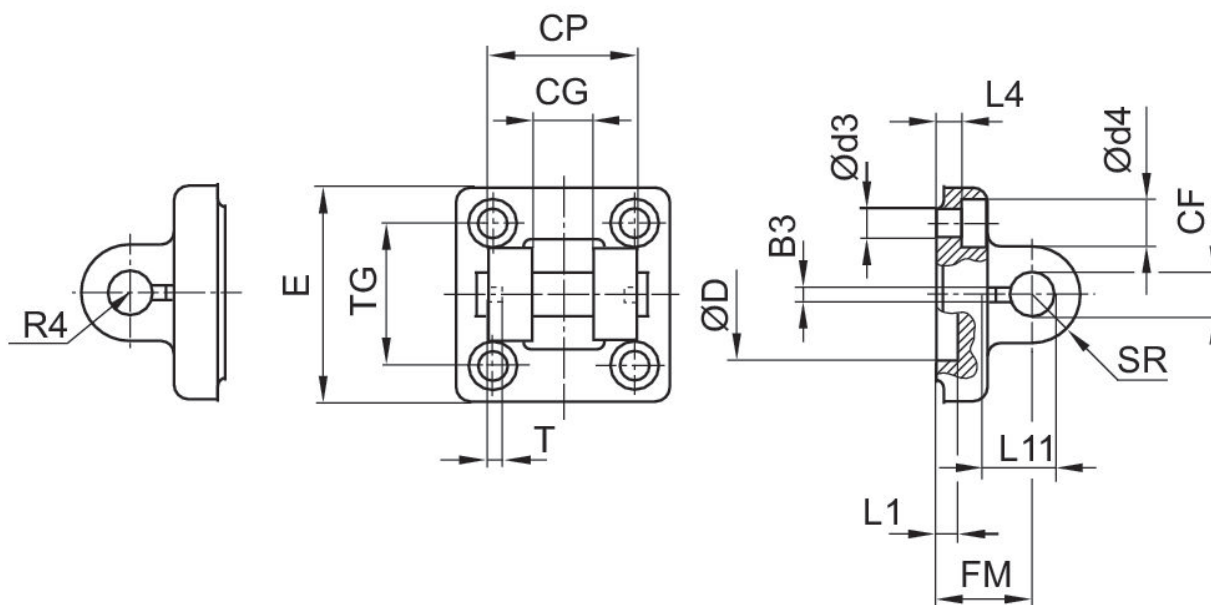
|                 |                       |
|-----------------|-----------------------|
| Material        | Nodular graphite iron |
| Surface         | galvanized            |
| Screws material | Steel, chrome-plated  |
| Surface screws  | galvanized            |
| Part No.        | 1827001600            |

# Clevis mounting AB6, Series CM1

1827001600

Clevis  
mounting

2024-03-26



| Piston Ø | Part No.   | B3 ±0,2 | Ø CF F7 | CG D10 | CP d12 | Ø d3 | Ø d4 | Ø D | E   |
|----------|------------|---------|---------|--------|--------|------|------|-----|-----|
| 32       | 1827001593 | 3.3     | 10      | 14     | 34     | 6.6  | 11   | 30  | 46  |
| 40       | 1827001594 | 4.3     | 12      | 16     | 40     | 6.6  | 11   | 35  | 52  |
| 50       | 1827001595 | 4.3     | 16      | 21     | 45     | 9    | 15   | 40  | 64  |
| 63       | 1827002024 | 4.3     | 16      | 21     | 51     | 9    | 15   | 45  | 74  |
| 80       | 1827001597 | 4.3     | 20      | 25     | 65     | 11   | 18   | 45  | 94  |
| 100      | 1827001598 | 4.3     | 20      | 25     | 75     | 11   | 18   | 55  | 113 |
| 125      | 1827001599 | 6.3     | 30      | 37     | 97     | 14   | 20   | 60  | 138 |
| 160      | 1827001600 | 6.3     | 35      | 43     | 122    | 18   | 26   | 65  | 180 |
| 200      | 1827001601 | 6.3     | 35      | 43     | 122    | 18   | 26   | 75  | 220 |
| 250      | 1827001602 | 8.3     | 40      | 49     | 125    | 22   | 33   | 90  | 280 |
| 320      | 5239013432 | 8.3     | 50      | 60     | 150    | 26   | 36   | 110 | 340 |

| Piston Ø | FM ±0,2 | L1 min. | L4 ±0,5 | L11 -0,5 | R4 | SR   | T ±0,2 | TG        |
|----------|---------|---------|---------|----------|----|------|--------|-----------|
| 32       | 22      | 4.5     | 5.5     | 16.5     | 17 | 10   | 3      | 32,5 ±0,2 |
| 40       | 25      | 4.5     | 5.5     | 18       | 20 | 12   | 4      | 38 ±0,2   |
| 50       | 27      | 4.5     | 6.5     | 23       | 22 | 15   | 4      | 46,5 ±0,2 |
| 63       | 32      | 4.5     | 6.5     | 23       | 25 | 15   | 4      | 56,5 ±0,2 |
| 80       | 36      | 4.5     | 10      | 27       | 30 | 20   | 4      | 72 ±0,2   |
| 100      | 41      | 4.5     | 10      | 27       | 32 | 20   | 4      | 89 ±0,2   |
| 125      | 50      | 7       | 10      | 40       | 42 | 26   | 6      | 110 ±0,3  |
| 160      | 55      | 10      | 10      | 45       | 46 | 32.5 | 6      | 140 ±0,3  |

# Clevis mounting AB6, Series CM1

1827001600

Clevis  
mounting

2024-03-26

| Piston Ø | FM ±0,2 | L1 min. | L4 ±0,5 | L11 -0,5 | R4 | SR   | T ±0,2 | TG       |
|----------|---------|---------|---------|----------|----|------|--------|----------|
| 200      | 60      | 10      | 11      | 45       | 49 | 32.5 | 6      | 175 ±0,3 |
| 250      | 70      | 12      | 11      | 53       | 55 | 40   | 8      | 220 ±0,3 |
| 320      | 80      | 11      | 15      | 69       | 65 | 50   | 8      | 270 ±0,3 |