

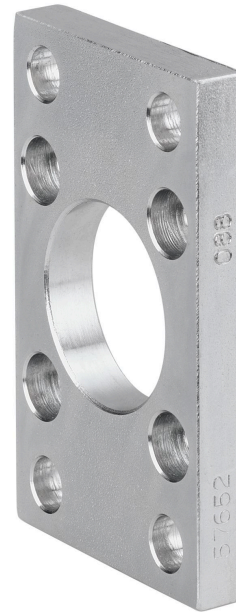
# Flange mounting MF1, MF2, Series CM1

1827002296

Flange  
mountings

2023-11-14

## AVENTICS Flange mountings



### Technical data

|                 |            |
|-----------------|------------|
| Industry        | Industrial |
| Piston diameter | 50 mm      |
| Weight          | 0.66 kg    |

### Material

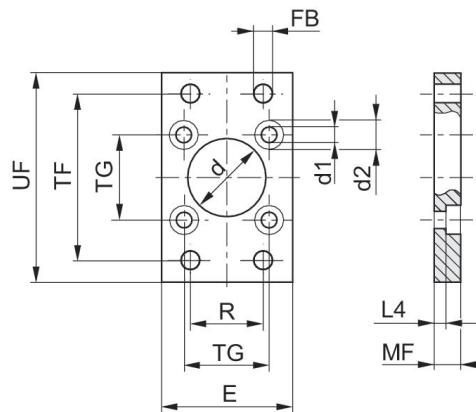
|                  |                      |
|------------------|----------------------|
| Housing material | Steel, chrome-plated |
| Surface housing  | galvanized           |
| Screws material  | Steel, chrome-plated |
| Surface screws   | galvanized           |
| Part No.         | 1827002296           |
| Dimensions       |                      |

# Flange mounting MF1, MF2, Series CM1

1827002296

Flange  
mountings

2023-11-14



| Piston $\varnothing$ | Part No.   | $\varnothing$ d H11 | $\varnothing$ d1 | $\varnothing$ d2 | E 1) | $\varnothing$ FB | L4  | MF | R  |
|----------------------|------------|---------------------|------------------|------------------|------|------------------|-----|----|----|
| 32                   | 1827002294 | 14                  | 6.6              | 11               | 50   | 7                | 3.6 | 10 | 32 |
| 40                   | 1827002295 | 14                  | 6.6              | 11               | 60   | 9                | 3.6 | 10 | 36 |
| 50                   | 1827002296 | 18                  | 9                | 15               | 66   | 9                | 3.4 | 12 | 45 |
| 63                   | 1827002297 | 18                  | 9                | 15               | 87   | 9                | 6.4 | 15 | 50 |
| 80                   | 1827002298 | 23                  | 11               | 18               | 107  | 12               | 4.4 | 15 | 63 |
| 100                  | 1827002299 | 28                  | 11               | 18               | 128  | 14               | 4.4 | 15 | 75 |

| Piston $\varnothing$ | TF  | TG  | UF  |
|----------------------|-----|-----|-----|
| 32                   | 65  | 32  | 80  |
| 40                   | 82  | 42  | 102 |
| 50                   | 90  | 50  | 110 |
| 63                   | 110 | 62  | 130 |
| 80                   | 135 | 82  | 160 |
| 100                  | 163 | 103 | 190 |

1) Max.