

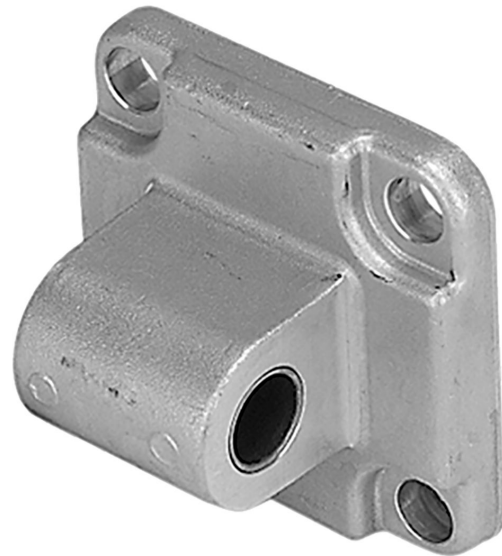
Rear eye MP4-BV, Series CM1

R412027408

Rear eye

2023-10-25

AVENTICS Rear eyes



Technical data

Industry

Industrial

Version

for clevis mounting MP2 and AB3

Standardization

ISO 15552

Piston diameter

32 mm

Swivel bearing \varnothing

10 mm

Material

Housing material

Die-cast aluminum

Screws material

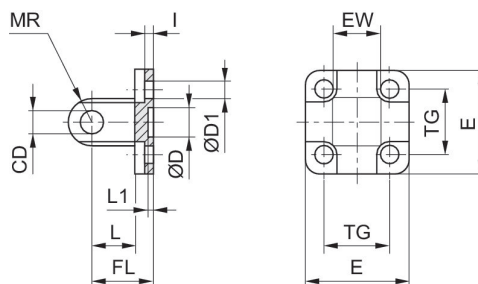
Steel, chrome-plated

Surface screws

galvanized

Part No.

R412027408



Rear eye MP4-BV, Series CM1

R412027408

Rear eye

2023-10-25

| Piston Ø | Part No. | CD H9 | Ø D | Ø D1 | E | EW | FL ±0,2 | l ±0,5 | L min. |
|----------|------------|-------|--------|------|-----|----|---------|--------|--------|
| 32 | R412027408 | 10 | 30 H11 | 6.6 | 45 | 26 | 22 | 5.5 | 13 |
| 40 | R412027409 | 12 | 35 H11 | 6.6 | 52 | 28 | 25 | 5.5 | 16 |
| 50 | R412027410 | 12 | 40 H11 | 9 | 65 | 32 | 27 | 6.5 | 16 |
| 63 | R412027411 | 16 | 45 H11 | 9 | 75 | 40 | 32 | 6.5 | 21 |
| 80 | R412027412 | 16 | 45 H11 | 11 | 95 | 50 | 36 | 10 | 22 |
| 100 | R412027413 | 20 | 55 H11 | 11 | 115 | 60 | 41 | 10 | 27 |

| Piston Ø | L1 min. | MR max. | TG |
|----------|---------|---------|------|
| 32 | 5 | 10 | 32,5 |
| 40 | 5 | 12 | 38 |
| 50 | 4.5 | 12 | 46,5 |
| 63 | 4.5 | 16 | 56,5 |
| 80 | 4.5 | 16 | 72 |
| 100 | 4.5 | 20 | 89 |