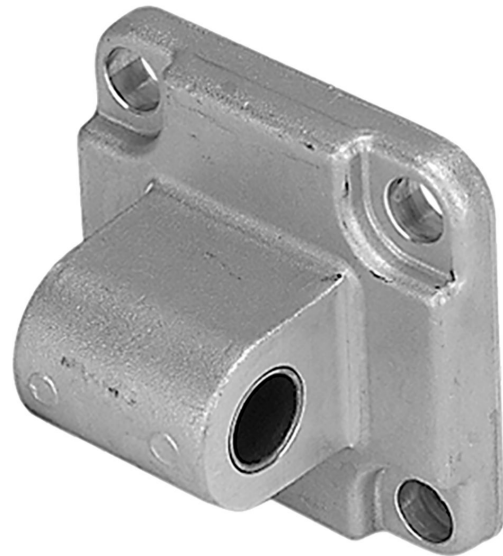


## AVENTICS Rear eyes



### Technical data

Industry

Industrial

Version

Corrosion-resistant version  
suitable for robust mechanical engineering  
applications  
for clevis mounting MP2 and AB3

Standardization

ISO 15552

Piston diameter

50 mm

Swivel bearing Ø

12 mm

### Material

Housing material

Aluminum

Surface housing

forged and anodized

Screws material

Stainless Steel

Part No.

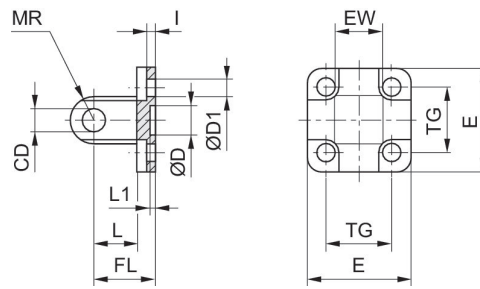
R412027815

# Rear eye, Series MP4-HD

R412027815

Rear eye

2023-10-25



Piston Ø	Part No.	CD H9	Ø D	Ø D1	E	EW	FL ±0.2	l ±0.5	L min.
32	R412027813	10	30 H11	6.6	47.5	26 -0.2/-0.6	22	5.5	12
40	R412027814	12	35 H11	6.6	53.5	28 -0.2/-0.6	25	5.5	15
50	R412027815	12	40 H11	9	64	32 -0.2/-0.6	27	6.5	15
63	R412027816	16	45 H11	9	74	40 -0.2/-0.6	32	6.5	20
80	R412027817	16	45 H11	11	94	50 -0.2/-0.6	36	10	20
100	R412027818	20	55 H11	11	113.5	60 -0.2/-0.6	41	10	25
125	R412027819	25	60 H11	14	138	70 -0.2/-0.6	50	10	30

Piston Ø	L1 min.	MR max.	TG
32	4.5	10	32.5 ±0.2
40	4.5	12	38 ±0.2
50	4.5	12	46.5 ±0.2
63	4.5	16	56.5 ±0.2
80	4.5	16	72 ±0.2
100	4.5	20	89 ±0.2
125	7	26	110 ±0.3