

Foot mounting MS1, Series CM1

1827001498

Foot
mountings

2024-08-29

AVENTICS Foot mountings



Technical data

Industry

Industrial

For series

PRA/TRB

CCI

CVI

Standardization

ISO 15552

Piston diameter

63 mm

Scope of delivery

Screws included in scope of delivery

Delivery unit

1 piece

Weight

0.46 kg

Material

Material

Steel, chrome-plated

Surface

galvanized

Screws material

Steel, chrome-plated

Surface screws

galvanized

Part No.

1827001498

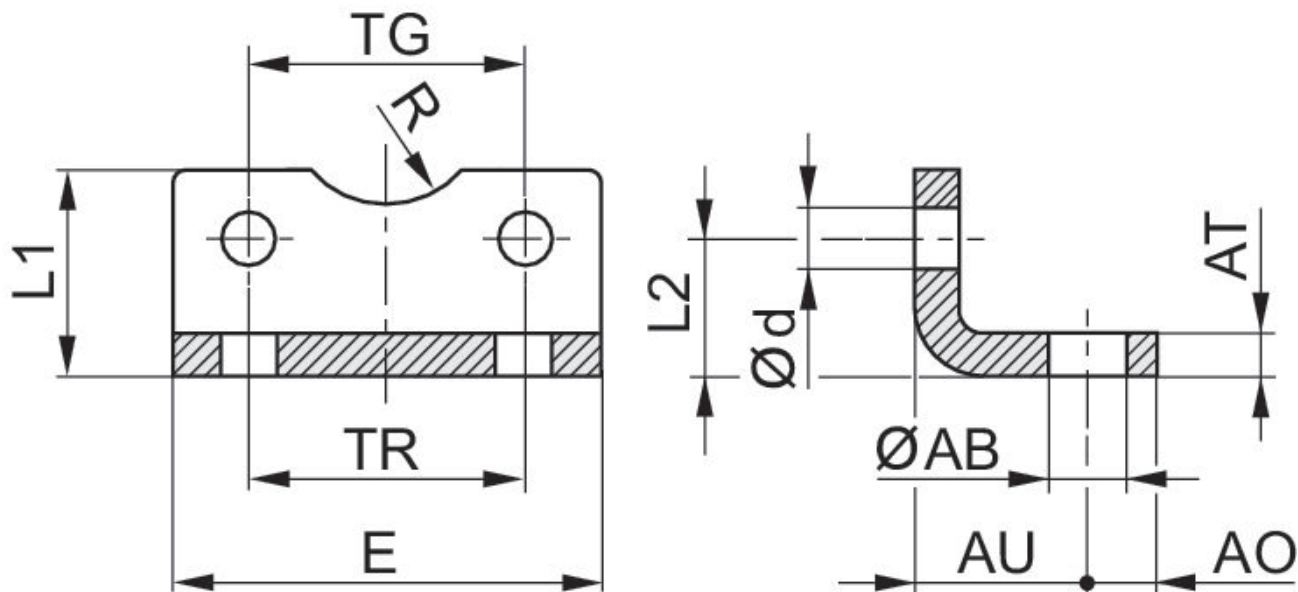
Foot mounting MS1, Series CM1

1827001498

Foot
mountings

2024-08-29

Dimensions



| Piston Ø | Part No. | ØAB H14 | AO | AT | AU ±0,2 | Ød H13 | E | L1 | L2 |
|----------|------------|---------|----|---------|---------|--------|-----|-----|-------|
| 20 | 1827002284 | 6.6 | 6 | 4 ±0,5 | 16 | 5.4 | 36 | 22 | 16 |
| 25 | 1827002285 | 6.6 | 6 | 4 ±0,5 | 16 | 5.4 | 40 | 23 | 17 |
| 32 | 1827002286 | 6.6 | 8 | 5 ±0,5 | 18 | 6.6 | 50 | 24 | 16 |
| 32 | 1827001271 | 7 | 8 | 4 ±0,3 | 24 | 6.6 | 48 | 25 | 15,75 |
| 40 | 1827001272 | 10 | 10 | 4 ±0,3 | 28 | 6.6 | 56 | 26 | 17 |
| 50 | 1827001273 | 10 | 11 | 5 ±0,3 | 32 | 9 | 68 | 32 | 21.75 |
| 63 | 1827001498 | 10 | 13 | 5 ±0,3 | 32 | 9 | 78 | 34 | 21.75 |
| 80 | 1827001275 | 12 | 16 | 6 ±0,5 | 41 | 11 | 98 | 47 | 27 |
| 100 | 1827001276 | 14.5 | 19 | 6 ±0,5 | 41 | 11 | 117 | 52 | 26.5 |
| 125 | 1827001310 | 16.5 | 20 | 8 ±1,0 | 45 | 13.5 | 144 | 69 | 35 |
| 160 | 1827001457 | 18.5 | 23 | 10 ±1,0 | 60 | 17.5 | 185 | 100 | 45 |
| 200 | 1827001458 | 24 | 26 | 12 ±1,0 | 70 | 17.5 | 220 | 120 | 47.5 |
| 250 | 1827001459 | 28 | 33 | 20 ±1,0 | 75 | 22 | 280 | 135 | 55 |

| Piston Ø | R H15 | TG | TR JS14 |
|----------|-------|-----------|---------|
| 20 | 10 | 22 ±0,2 | 22 |
| 25 | 11 | 26 ±0,2 | 26 |
| 32 | 12 | 32 ±0,2 | 32 |
| 32 | 15 | 32,5 ±0,2 | 32 |
| 40 | 17.5 | 38 ±0,2 | 36 |
| 50 | 20 | 46.5 ±0,2 | 45 |
| 63 | 22.5 | 56.5 ±0,2 | 50 |
| 80 | 22.5 | 72 ±0,2 | 63 |
| 100 | 27.5 | 89 ±0,2 | 75 |
| 125 | 30 | 110 ±0,3 | 90 |
| 160 | 32.5 | 140 ±0,3 | 115 |

Foot mounting MS1, Series CM1

1827001498

Foot
mountings

2024-08-29

| Piston Ø | R H15 | TG | TR JS14 |
|----------|-------|----------|---------|
| 200 | 37.5 | 175 ±0,3 | 135 |
| 250 | 45 | 220 ±0,3 | 165 |