

Ball eye rod end AP6, series CM2

8958209032

Ball eye rod
ends

2023-10-06

AVENTICS Ball eye rod ends



Technical data

Industry

Industrial

For series

with flange
to mount on cylinder CCL-IS/IC, SSI, CSL-RD,
ICM, ICS-D2

For series

CCL-IS
CCL-IC
SSI
CSL-RD
ICM
ICS-D2

Thread size

M10x1,25

Swivel bearing Ø

10 mm

Weight

0.09 kg

Material

Housing material

Stainless Steel

Part No.

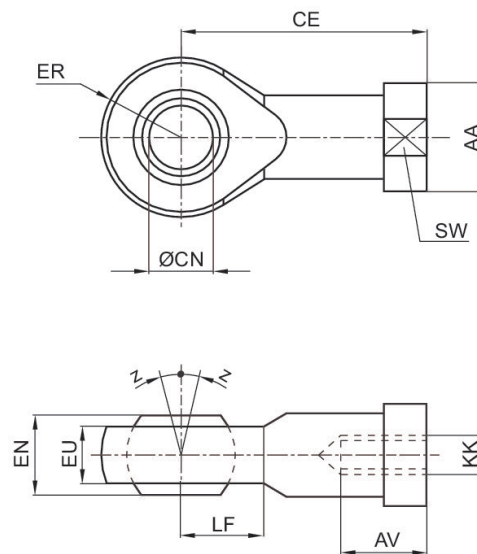
8958209032

Ball eye rod end AP6, series CM2

8958209032

Ball eye rod ends

2023-10-06



KK	Part No.	AA	AV min.	CE	Ø CN H7	EN -0,1	ER	EU max.	LF
M4	8958209002	11	8	27	5	8	9	6	9
M6	8958209012	13	9	30	6	9	10	6,75	10
M8	8958209022	16	12	36	8	12	12	9	12
M10x1,25	8958209032	19	15	43	10	14	14	10.5	14
M12x1,25	8958209042	22	18	50	12	16	16	12	16
M16x1,5	8958209052	27	24	64	16	21	21	15	21
M20x1,5	8958209062	34	30	77	20	25	25	18	25
M27x2	8958209072	50	45	110	30	37	35	25	35

KK	SW	Z [°] max.
M4	9	6,5
M6	11	6,5
M8	14	6,5
M10x1,25	17	6,5
M12x1,25	19	6,5
M16x1,5	22	7,5
M20x1,5	30	7,5
M27x2	41	7,5