

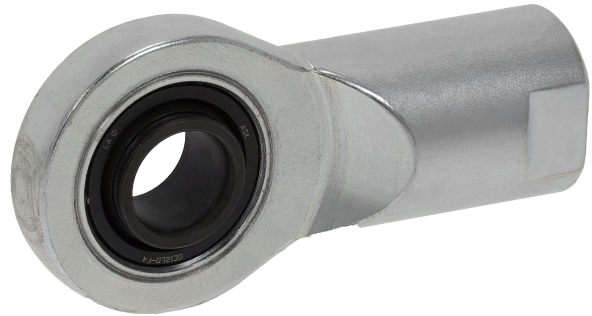
# Ball eye rod end AP6, series CM2

3660902000

Ball eye rod  
ends

2024-04-29

## AVENTICS Ball eye rod ends



### Technical data

Industry

To mount on series

Industrial

PRA

TRB

CVI

167

CCI

KPZ

SSI

MNI

RPC

RDC

Type

narrow version

Thread size

M10x1,25

Swivel bearing Ø

10 mm

Weight

0.08 kg

### Material

Housing material

Steel, chrome-plated

Surface housing

galvanized

Part No.

3660902000

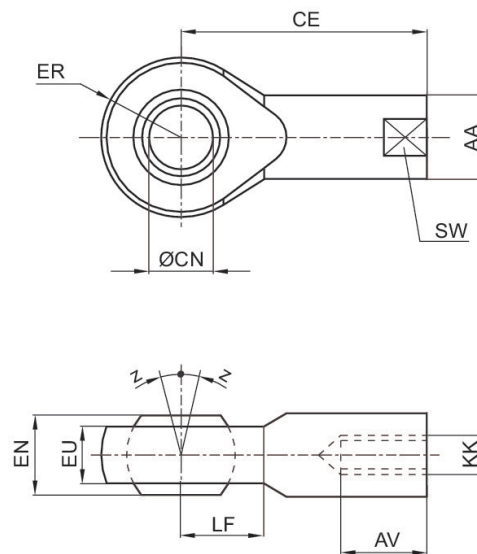
### Dimensions

# Ball eye rod end AP6, series CM2

3660902000

Ball eye rod  
ends

2024-04-29



Part No.	KK	AA	AV min.	CE	Ø CN H7	EN -0,1	ER	EU max.	LF
3660902000	M10x1.25	19	15	43	10	12	15	9	14
3660904000	M12x1.25	22	16	50	12	12	17	8	16

Part No.	SW	Z [°] max.
3660902000	17	8
3660904000	19	8