

Ball eye rod end AP6, series CM2

2990690905

Ball eye rod
ends

2023-10-06

AVENTICS Ball eye rod ends



Technical data

Industry

Industrial

For series

with flange

Stainless steel, acid-proof

Thread size

M16x1,5

Swivel bearing Ø

16 mm

Weight

0.27 kg

Material

Housing material

Stainless Steel

Surface housing

acid-proof

Part No.

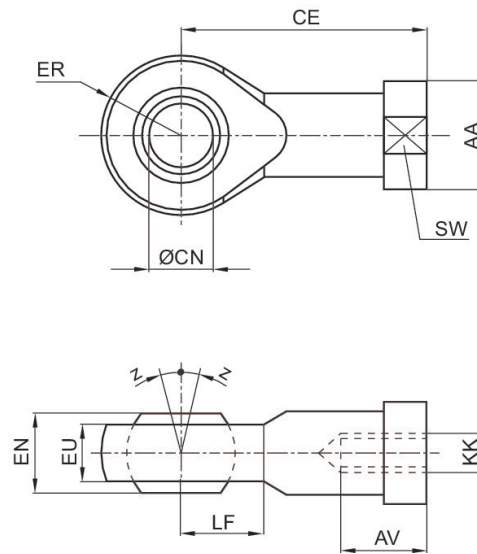
2990690905

Ball eye rod end AP6, series CM2

2990690905

Ball eye rod
ends

2023-10-06



KK	Part No.	AA	AV min.	CE	Ø CN H7	EN -0,1	ER	EU max.	LF
M10x1,25	2990690903	19	20	43	10	14	14	10.5	13
M12x1,25	2990690904	22	22	50	12	16	16	12	16
M16x1,5	2990690905	27	28	64	16	21	21	15	21
M20x1,5	2990690908	34	33	77	20	25	25	18	25
M27x2	2990600912	51	51	110	30	37	35	18	36
M36x2	2990600916	58	60	125	35	35	42,5	21	45

KK	SW	Z [°] max.
M10x1,25	17	7
M12x1,25	19	7
M16x1,5	22	8
M20x1,5	32	8
M27x2	41	4
M36x2	50	6