

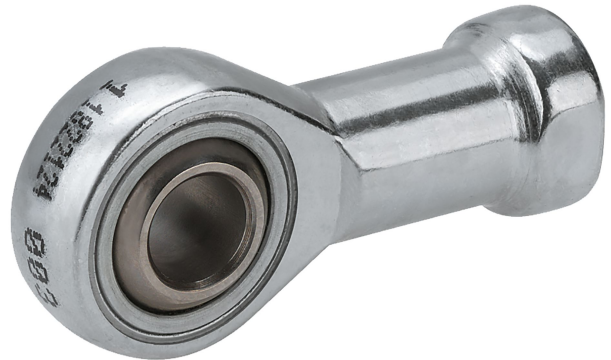
Ball eye rod end AP6, series CM2

8958209052

Ball eye rod
ends

2023-10-06

AVENTICS Ball eye rod ends



Technical data

Industry

Industrial

For series

with flange

to mount on cylinder CCL-IS/IC, SSI, CSL-RD,
ICM, ICS-D2

For series

CCL-IS

CCL-IC

SSI

ICS-D2

Thread size

M16x1,5

Swivel bearing Ø

16 mm

Weight

0.23 kg

Material

Housing material

Stainless Steel

Part No.

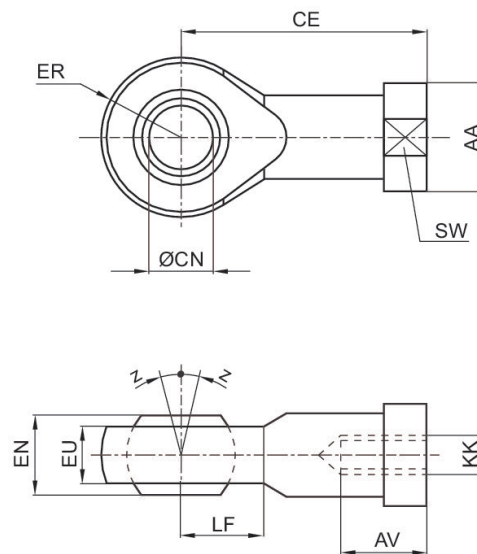
8958209052

Ball eye rod end AP6, series CM2

8958209052

Ball eye rod ends

2023-10-06



| KK | Part No. | AA | AV min. | CE | Ø CN H7 | EN -0,1 | ER | EU max. | LF |
|----------|------------|----|---------|-----|---------|---------|----|---------|----|
| M4 | 8958209002 | 11 | 8 | 27 | 5 | 8 | 9 | 6 | 9 |
| M6 | 8958209012 | 13 | 9 | 30 | 6 | 9 | 10 | 6,75 | 10 |
| M8 | 8958209022 | 16 | 12 | 36 | 8 | 12 | 12 | 9 | 12 |
| M10x1,25 | 8958209032 | 19 | 15 | 43 | 10 | 14 | 14 | 10.5 | 14 |
| M12x1,25 | 8958209042 | 22 | 18 | 50 | 12 | 16 | 16 | 12 | 16 |
| M16x1,5 | 8958209052 | 27 | 24 | 64 | 16 | 21 | 21 | 15 | 21 |
| M20x1,5 | 8958209062 | 34 | 30 | 77 | 20 | 25 | 25 | 18 | 25 |
| M27x2 | 8958209072 | 50 | 45 | 110 | 30 | 37 | 35 | 25 | 35 |

| KK | SW | Z [°] max. |
|----------|----|------------|
| M4 | 9 | 6,5 |
| M6 | 11 | 6,5 |
| M8 | 14 | 6,5 |
| M10x1,25 | 17 | 6,5 |
| M12x1,25 | 19 | 6,5 |
| M16x1,5 | 22 | 7,5 |
| M20x1,5 | 30 | 7,5 |
| M27x2 | 41 | 7,5 |